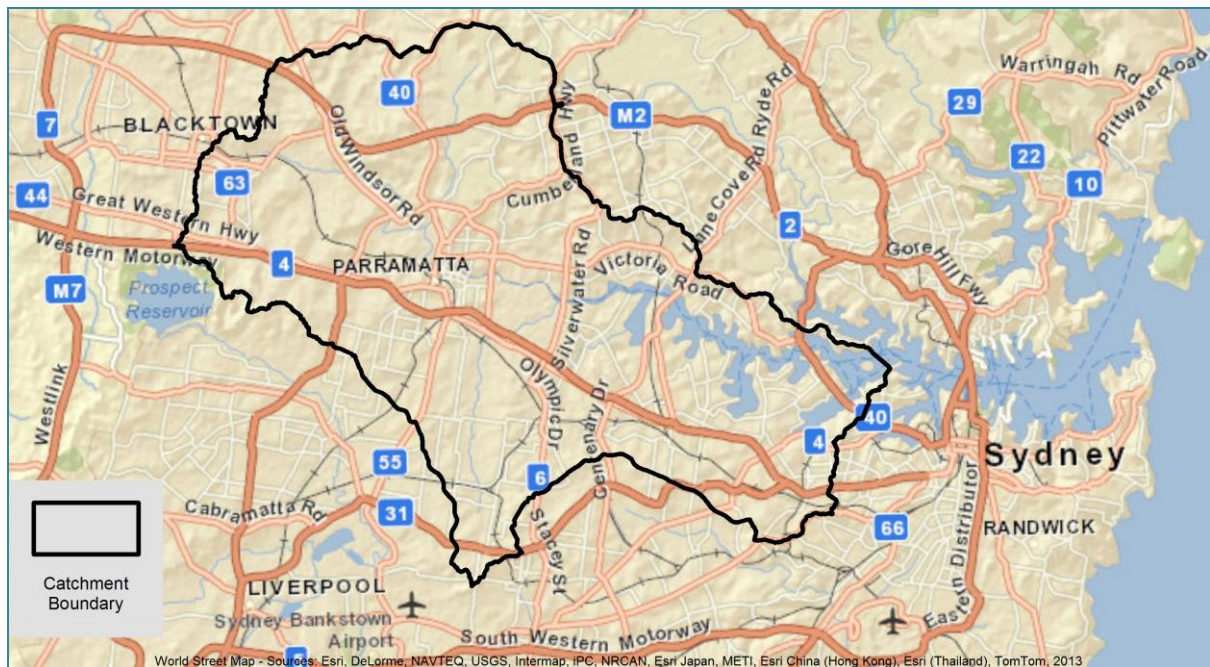


Community Profile Analysis Parramatta River Catchment

March 2013



Disclaimer: The Parramatta River Catchment Group has prepared this document in good faith exercising all due care and attention, but no representation or warranty, express or implied, is made as to the relevance, accuracy, completeness or fitness for purpose of this document in respect of any particular user's circumstances. Users of this document should satisfy themselves concerning its application to, and where necessary seek expert advice in respect of, their situation.

Prepared for: Parramatta River Catchment Group

This report has been prepared by Bruce Boyes Consulting www.bruceboyes.info to assist the preparation of a Strategic Plan for the Parramatta River Catchment and to provide reference information for other Parramatta River Catchment Group activities.

Project Manager: Leanne Hanvey

Principal Author: Bruce Boyes

Citation: Parramatta River Catchment Group (PRCG) 2013, *Community Profile Analysis, Parramatta River Catchment*.

© Parramatta River Catchment Group, 2013

10 Valentine Ave (PO Box 3720)

Parramatta NSW 2124

Phone: +61 2 9895 6253

Web: www.parramattariver.org.au

This material may be reproduced for non-commercial purpose in whole or in part, provided the meaning is unchanged and the source is acknowledged.

March 2013

Contents

Summary	1
1 Introduction.....	3
1.1 About this report	3
1.2 Population statistics	3
1.3 Statistical geographies.....	3
2 Population profile	6
2.1 Total population	6
2.2 Local Government Area population growth	6
2.3 Population density.....	7
2.4 Gender balance	7
2.5 Age distribution	8
2.6 Family structure	9
2.7 Indigenous population.....	10
2.8 Ethnicity (country of birth)	10
2.9 Language spoken at home.....	11
3 Income, employment, business and education profile	13
3.1 Personal income	13
3.2 Household income	14
3.3 Index of advantage/disadvantage	15
3.4 Employment.....	16
3.5 Industry of employment.....	16
3.6 Occupation	19
3.7 Business numbers and turnover.....	19
3.8 Primary production.....	22
3.9 Level of education.....	22
3.10 Attendance at educational institutions	23

4	Residential profile	23
4.1	Dwelling types.....	23
4.2	Home ownership.....	24
4.3	Home internet connection	25
4.4	Liveability index	25
4.5	Gentrification.....	26
5	Environmental engagement profile.....	27
5.1	Level of volunteering.....	27
5.2	Bushcare activity locations.....	27
6	Appendix of tables	31
6.1	Population profile	31
6.2	Income, employment, business and education profile	34
6.3	Residential profile	36
6.4	Environmental engagement profile.....	38
7	Appendix of statistical geography maps	39
8	References	43

List of figures

Figure 1	Population age distribution for Parramatta River Catchment in 2006 and 2011	8
Figure 2	Population age distribution by gender for Parramatta River Catchment in 2011	9
Figure 3	Index of Relative Socio-economic Advantage and Disadvantage deciles for Census Districts across Parramatta River Catchment in 2006	15
Figure 4	Proportions of employed people in each of 17 categories of industry of employment in Parramatta River Catchment in 2006	18
Figure 5	Numbers of businesses in various turnover size ranges for 19 industry categories in Parramatta River Catchment in 2011	21
Figure 6	Locations and types of primary producers in Parramatta River Catchment	22
Figure 7	Bushcare activity locations in relation to native vegetation	28
Figure 8	Bushcare activity locations in relation to Endangered Ecological Communities	29

Figure 9 Bushcare activity locations in relation to relative socio-economic advantage and disadvantage deciles.....	30
Figure 10 Collection Districts (CDs) in Parramatta River Catchment.....	39
Figure 11 Statistical Areas Level 1 (SA1s) in Parramatta River Catchment.....	40
Figure 12 Statistical Areas Level 2 (SA2s) in Parramatta River Catchment.....	41
Figure 13 Local Government Areas (LGAs) in Parramatta River Catchment	42

List of tables

Table 1 Statistical geographies and population types used in the various sections of this report	4
Table 2 Local Government Areas in Parramatta River Catchment	5
Table 3 Parramatta River Catchment population in 2006 and 2011 and population growth 2006-2011.....	6
Table 4 Estimated resident population (ERP) growth from 2001 to 2011 of Local Government Areas across Parramatta River Catchment	6
Table 5 Population density in 2006 and 2011 and increase in population density between 2006 and 2011 in Parramatta River Catchment.....	7
Table 6 Gender balance of Parramatta River Catchment in 2011	7
Table 7 Family structure of Parramatta River Catchment in 2011	9
Table 8 Indigenous population of Parramatta River Catchment in 2011	10
Table 9 Country of birth of people in Parramatta River Catchment in 2011	10
Table 10 Language spoken at home by people in Parramatta River Catchment in 2011.....	12
Table 11 Numbers and proportions of people receiving various amounts of personal weekly income in Parramatta River Catchment in 2011	13
Table 12 Numbers and proportions of households receiving various amounts of weekly income in Parramatta River Catchment in 2011	14
Table 13 Numbers and proportions of employed people in Parramatta River Catchment in 2006.....	16
Table 14 Numbers and proportions of employed people in each of 17 categories of industry of employment in Parramatta River Catchment in 2006	17
Table 15 Numbers and proportions of employed people in each of nine categories of occupation in Parramatta River Catchment in 2006	19
Table 16 Numbers of businesses in various turnover size ranges for 19 industry categories in Parramatta River Catchment in 2011	20

Table 17 Numbers and proportions of people with non-school qualifications in Parramatta River Catchment in 2006.....	23
Table 18 Numbers and proportions of people attending educational institutions in Parramatta River Catchment in 2011.....	23
Table 19 Numbers and proportions of different dwelling types in Parramatta River Catchment in 2011	24
Table 20 Numbers of people living in each of the different dwelling types in Parramatta River Catchment in 2011	24
Table 21 Numbers and proportions of dwellings owned and rented in Parramatta River Catchment in 2011	24
Table 22 Numbers and proportions of types of home internet connection in dwellings in Parramatta River Catchment in 2011	25
Table 23 Quality of Life survey rankings for Local Government Areas across Parramatta River Catchment	25
Table 24 Numbers and proportions of volunteers in Parramatta River Catchment in 2011 ..	27
Table 25 Annual estimated resident population (ERP) for 2001-2011 for Local Government Areas across Parramatta River Catchment	31
Table 26 Population age distribution (numbers of people) for Parramatta River Catchment in 2006.....	32
Table 27 Population age distribution (proportions of total population) for Parramatta River Catchment in 2006.....	32
Table 28 Population age distribution (numbers of people) for Parramatta River Catchment in 2011.....	32
Table 29 Population age distribution (proportions of total population) for Parramatta River Catchment in 2011	32
Table 30 Family structure of Parramatta River Catchment in 2011.....	33
Table 31 Gender balance of the Indigenous population of Parramatta River Catchment in 2011.....	33
Table 32 Numbers of males earning various amounts of personal weekly income in Parramatta River Catchment in 2011	34
Table 33 Numbers of females earning various amounts of personal weekly income in Parramatta River Catchment in 2011	34
Table 34 Numbers of family households earning various amounts of weekly income in Parramatta River Catchment in 2011	35
Table 35 Numbers of non-family households earning various amounts of weekly income Parramatta River Catchment in 2011	35

Table 36 Numbers of people attending educational institutions in Parramatta River Catchment in 2011	36
Table 37 Numbers of dwellings owned and rented in Parramatta River Catchment in 2011	36
Table 38 Breakdown of numbers of different types of crime in each of the Local Government Areas across Parramatta River Catchment	37
Table 39 Numbers and ages of all volunteers in Parramatta River Catchment in 2011	38
Table 40 Numbers and ages of male volunteers in Parramatta River Catchment in 2011 ...	38
Table 41 Numbers and ages of female volunteers in Parramatta River Catchment in 2011	38

Summary

This Community Profile Analysis has been prepared to assist the preparation of a Strategic Plan for the Parramatta River Catchment and to provide reference information for other Parramatta River Catchment Group (PRCG) activities. It has been prepared using Australian Bureau of Statistics (ABS) Census data and publications and information from other sources. The Parramatta River Catchment is located in western Sydney and is the main tributary of Sydney Harbour.

Key findings include:

- In 2006 the **population** of Parramatta River Catchment was 738655, and in 2011 was 785083, a **population growth** of 6.29%.
- There is a **gender imbalance** in Parramatta River Catchment, with the female population 1.67% higher than the male population.
- In 2011 the **Indigenous population** of Parramatta River Catchment was 5417, which is 0.69% of the total population.
- The five countries from which the largest proportion of **people born outside Australia** in Parramatta River Catchment originate are (in order of highest to lowest proportion): China excluding Special Administrative Regions and Taiwan; India; United Kingdom, Channel Islands and Isle of Man; Lebanon; and Republic of South Korea.
- The five **languages other than English spoken at home** by the highest proportion of people in Parramatta River Catchment are (in order of highest to lowest proportion): Arabic; Chinese Languages - Mandarin; Chinese Languages - Cantonese; Korean; and Italian.
- Parramatta River Catchment has higher proportions of **people employed in the industries** of Property and Business Services; Retail Trade; Manufacturing; and Health and Community Services than in other industries. There are very low proportions of people working in the Mining and Agriculture, Forestry and Fishing industries in Parramatta River Catchment.
- The five **industries with the highest total business numbers** in Parramatta River Catchment are Construction; Professional, Scientific and Technical Services; Rental, Hiring and Real Estate Services; Transport, Postal and Warehousing; and Retail Trade.
- The **non-school qualifications** of people in the Parramatta River Catchment in 2006 included Certificate level (10.71%), Bachelor Degree level (12.86%), and Postgraduate Degree level (3.98%).
- Of the people in Parramatta River Catchment **attending educational institutions** in 2011, 22.84% were attending infants and primary school, 19.34% were attending secondary school, 7.93% were attending a technical or further education institution, and 18.51% were attending a university or other tertiary institution.
- In Parramatta River Catchment, 52.91% of **dwellings** are separate houses, 28.24% are flats, units, or apartments, and 12.51% are semi detached, row or terrace houses, or

townhouses. Of the dwellings, 29.46% are owned outright, 33.09% are owned with a mortgage, and 34.16% are rented.

- In Parramatta River Catchment, 74.41% of dwellings have a broadband **internet connection**, with only 2.30% of dwellings still having a dial up connection. However, 16.44% of dwellings have no internet connection.
- The 2008 BankWest Quality of Life survey of 590 Local Government Areas across Australia found that Parramatta River Catchment has a great divergence in **quality of life**, with Local Government Areas in both the top ten and bottom ten in New South Wales and covering a full spectrum between.

1 Introduction

1.1 About this report

This Community Profile Analysis has been prepared to assist the preparation of a Strategic Plan for the Parramatta River Catchment and to provide reference information for other Parramatta River Catchment Group (PRCG) activities. The Parramatta River Catchment is located in western Sydney and is the main tributary of Sydney Harbour.

The Community Profile Analysis has been prepared using Australian Bureau of Statistics (ABS) Census data and publications and information from other sources. It comprises:

- Population profile
- Income, employment, business and education profile
- Residential profile
- Environmental engagement profile.

1.2 Population statistics

Two types of Australian Bureau of Statistics (ABS) population statistics are used in this Community Profile Analysis: Place of Usual Residence (PURP) and Estimated Resident Population (ERP). The types of population statistics used in the various sections of the report are shown in Table 1.

Place of Usual Residence (PURP) (ABS 2011b) is used when conducting a Census data analysis such as this Community Profile Analysis. The Census count for Place of Usual Residence (PURP) is a count of every person in Australia on Census Night, based on the area in which they usually live. However, the Estimated Resident Population (ERP) (ABS 2011c) is the official measure of the population of Australia. In the Census year, the ERP is first calculated at the Census date (9 August for the 2011 Census), and then backdated to calculate the ERP at 30 June of the Census year. In the compilation of the 30 June ERP for a Census year, important adjustments are made to the Census count based on place of usual residence. Because of this it is important to note that the Place of Usual Residence (PURP) statistics in this report should not be quoted as an official population measure.

1.3 Statistical geographies

Four statistical geographies have been used in this report: Collection District (CD), Statistical Area Level 1 (SA1), Statistical Area Level 2 (SA2), and Local Government Area (LGA). The geographies used in the various sections of the report are shown in Table 1, and maps for each of these geographies can be found in the Appendix of statistical geography maps (Chapter 7 of this report).

Until 2006 the Collection District (CD) was the smallest geographical area for which Australian Bureau of Statistics (ABS) Census data was available. From 2011 the Collection Districts (CD) was replaced with the Statistical Area Level 1 (SA1) as part of the new Australian Statistical Geography Standard (ASGS) developed by the ABS for the collection and dissemination of geographic statistics (ABS 2011a). SA1s have been designed as the smallest unit for the processing and release of Census data, and are intended to remain relatively constant over several Censuses. The Statistical Area Level 2 (SA2) is also part of the ASGS and each consists of one or more whole SA1s. Wherever possible SA2s are

based on officially gazetted State suburbs and localities, and in urban areas largely conform to whole suburbs and combinations of whole suburbs. A Local Government Area (LGA) is a geographical area under the responsibility of an incorporated local government council (or in other parts of Australia, an incorporated Indigenous government council). LGAs are a non-ABS structure, and in New South Wales (NSW) their geographic definition is the responsibility of the NSW Government.

Table 1 Statistical geographies and population types used in the various sections of this report

Report section	Statistical geography (Chap 7)	Statistics confined to PRC area?	Population type (Sect 1.2)
2.1 Total population	CD, SA1	Yes	PURP
2.2 Local Government Area population growth	LGA	No	ERP
2.3 Population density	CD, SA1	Yes	PURP
2.4 Gender balance	SA1	Yes	PURP
2.5 Age distribution	CD, SA1	Yes	PURP
2.6 Family structure	SA1	Yes	PURP
2.7 Indigenous population	SA1	Yes	PURP
2.8 Ethnicity (country of birth)	SA1	Yes	PURP
2.9 Language spoken at home	SA1	Yes	PURP
3.1 Personal income	SA1	Yes	PURP
3.2 Household income	SA1	Yes	PURP
3.3 Index of advantage/disadvantage	CD	Yes	N/A
3.4 Employment	CD	Yes	PURP
3.5 Industry of employment	CD	Yes	PURP
3.6 Occupation	CD	Yes	PURP
3.7 Business numbers and turnover	SA2	No	N/A
3.8 Primary production	N/A	Yes	N/A
3.9 Level of education	CD	Yes	PURP
3.10 Attendance at educational institutions	SA1	Yes	PURP
4.1 Dwelling types	SA1	Yes	PURP
4.2 Home ownership	SA1	Yes	PURP
4.3 Home internet connection	SA1	Yes	PURP
4.4 Liveability index	LGA	No	N/A
4.5 Gentrification	LGA	No	N/A
5.1 Level of volunteering	SA1	Yes	PURP
5.2 Bushcare activity locations	CD	Yes	PURP

The use of the Local Government Area (LGA) statistics in this report (Sections 2.2, 4.4 and 4.5) and Statistical Area Level 2 (SA2) statistics in this report (Section 3.7) needs to consider the proportions of each LGA or SA2 within Parramatta River Catchment. The proportions within Parramatta River Catchment of the Local Government Areas across the catchment are shown in Table 2, and a map can be found in the Appendix of statistical geography maps

(Chapter 7 of this report). If the proportion of Local Government Area was less than 1% it has not been included.

Table 2 Local Government Areas in Parramatta River Catchment

Local Government	Total Local Government Area (km²)	Local Government Area within Parramatta River Catchment (km²)	Proportion of Local Government Area within Parramatta River Catchment
Ashfield	8.28	8.06	97.37%
Auburn	32.48	31.51	97.03%
Bankstown	76.80	9.43	12.28%
Blacktown	240.10	23.88	9.95%
Burwood	7.13	4.93	69.21%
Canada Bay	19.89	19.89	100.00%
Holroyd	40.18	26.45	65.84%
Hunters Hill	5.72	3.24	56.71%
Leichhardt	10.55	3.95	37.43%
Marrickville	16.52	2.07	12.53%
Parramatta	61.36	57.17	93.18%
Ryde	40.47	12.74	31.47%
Strathfield	13.90	6.51	46.84%
The Hills Shire	400.45	43.87	10.95%

2 Population profile

2.1 Total population

The total population of Parramatta River Catchment in 2006 and 2011 is shown in Table 3 (ABS 2012a, 2012b). These figures are for just the Parramatta River Catchment area (refer Section 1.3 of this report).

Table 3 Parramatta River Catchment population in 2006 and 2011 and population growth 2006-2011 (ABS 2012a, 2012b)

Population 2006	738655
Population 2011	785083
Population growth 2006-2011	6.29%

2.2 Local Government Area population growth

The Estimated Resident Population (ERP) growth from 2001 to 2011 in Local Government Areas across Parramatta River Catchment is shown in Table 4 (ABS 2012c). These figures are for the whole of each Local Government Area, including parts of Local Government Areas outside Parramatta River Catchment, so the use of the figures needs to consider the information in Section 1.3 of this report.

Table 4 Estimated resident population (ERP) growth from 2001 to 2011 of Local Government Areas across Parramatta River Catchment (ABS 2012c)

Local Government	Estimated resident population (ERP) growth for whole of each Local Government Area (pr = preliminary ABS estimates)						
	Proportion of Local Government Area in Catchment	Population 2001	Population 2006	Population 2011 (pr)	2001-2011 population increase (pr)	2001-2011 population growth (pr)	Average annual population growth 2001-2011 (pr)
Ashfield	97.37%	40521	41520	43683	3162	7.8	0.8
Auburn	97.03%	58678	68231	78286	19608	33.4	2.9
Bankstown	12.28%	171994	176857	190637	18643	10.8	1.0
Blacktown	9.95%	264799	280612	312479	47680	18.0	1.7
Burwood	69.21%	30580	32395	34305	3725	12.2	1.2
Canada Bay	100.00%	62322	68725	79905	17583	28.2	2.5
Holroyd	65.84%	89236	93323	103869	14633	16.4	1.5
Hunters Hill	56.71%	13382	13746	13880	498	3.7	0.4
Leichhardt	37.43%	50456	51554	55651	5195	10.3	1.0
Marrickville	12.53%	76743	75546	81489	4746	6.2	0.6
Parramatta	93.18%	147882	153891	174554	26672	18.0	1.7
Ryde	31.47%	99151	100962	108371	9220	9.3	0.9

Local Government	Estimated resident population (ERP) growth for whole of each Local Government Area (pr = preliminary ABS estimates)						
	Proportion of Local Government Area in Catchment	Population 2001	Population 2006	Population 2011 (pr)	2001-2011 population increase (pr)	2001-2011 population growth (pr)	Average annual population growth 2001-2011 (pr)
Strathfield	46.84%	29433	33231	37141	7708	26.2	2.4
The Hills Shire	10.95%	146045	165143	176986	30941	21.2	1.9

A detailed table showing annual estimated resident population (ERP) for 2001-2011 for Local Government Areas across Parramatta River Catchment can be found in the Appendix of tables (Chapter 6 of this report).

2.3 Population density

The population density in 2006 and 2011 and increase in population density between 2006 and 2011 in Parramatta River Catchment are shown in Table 5 (ABS 2012a, 2012b). These figures are for just the Parramatta River Catchment area (refer Section 1.3 of this report).

Table 5 Population density in 2006 and 2011 and increase in population density between 2006 and 2011 in Parramatta River Catchment (ABS 2012a, 2012b)

Catchment area (km ²)	265.89
Population 2006	738655
Density 2006 (people/km ²)	2778.07
Population 2011	785083
Density 2011 (people/km ²)	2952.69
Density increase 2006-2011	6.29%

2.4 Gender balance

The gender balance of Parramatta River Catchment in 2011 is shown in Table 6 (ABS 2012a). These figures are for just the Parramatta River Catchment area (refer Section 1.3 of this report).

Table 6 Gender balance of Parramatta River Catchment in 2011 (ABS 2012a)

Males	389286
Females	395797
Proportion by which female population is higher than male population	1.67%

2.5 Age distribution

The population age distribution for Parramatta River Catchment in 2006 and 2011 is shown in Figure 1 (ABS 2012a, 2012b). The population age distribution by gender for Parramatta River Catchment in 2011 is shown in Figure 2 (ABS 2012a). These figures are for just the Parramatta River Catchment area (refer Section 1.3 of this report).

Figure 1 Population age distribution for Parramatta River Catchment in 2006 and 2011 (ABS 2012a, 2012b)

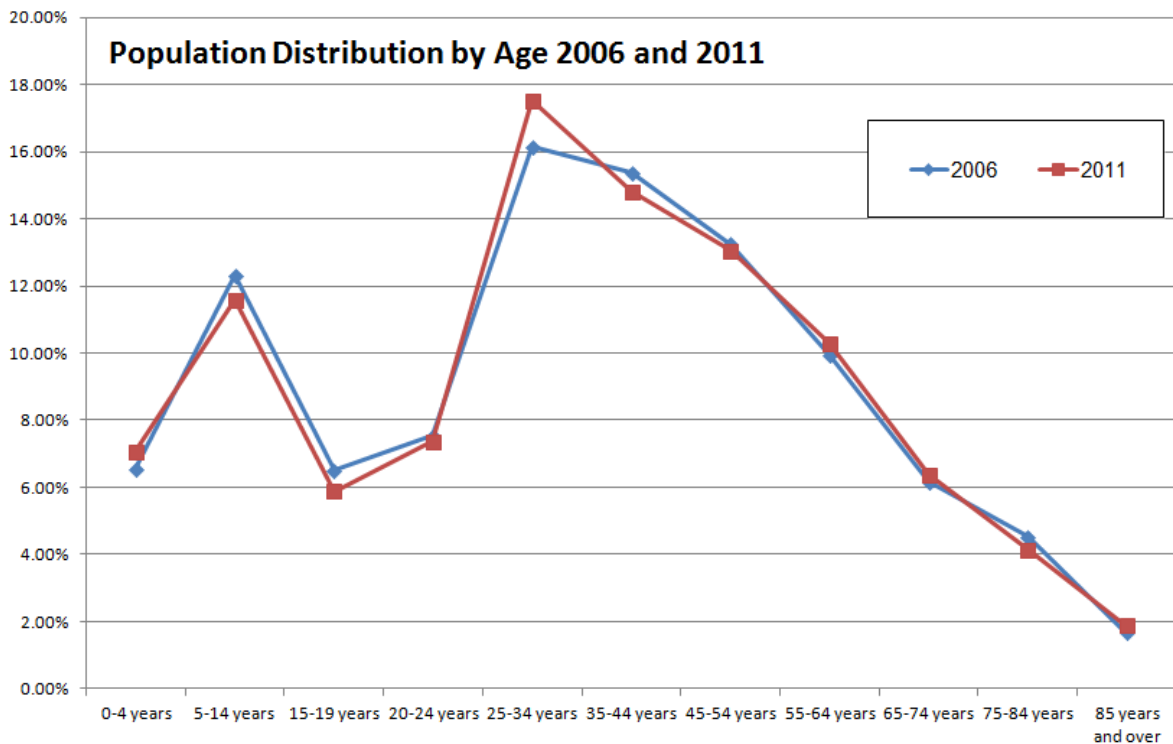
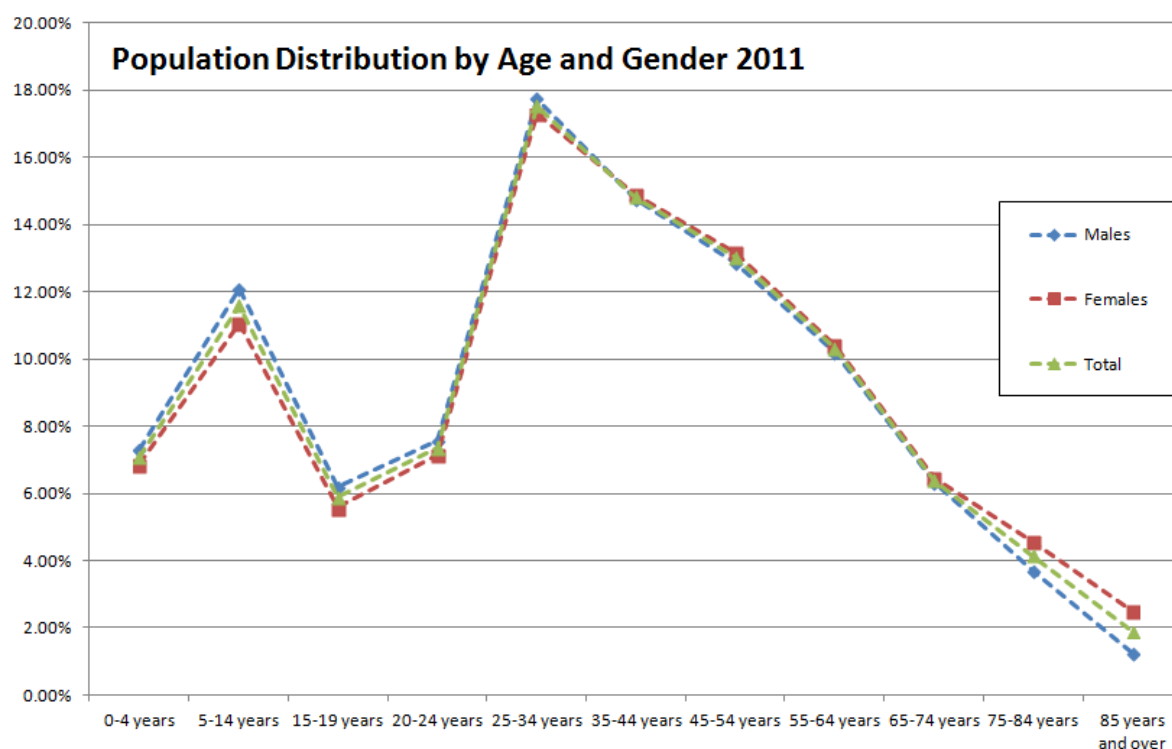


Figure 2 Population age distribution by gender for Parramatta River Catchment in 2011 (ABS 2012a)



Detailed tables showing numbers and proportions of people for each of the age levels can be found in the Appendix of tables (Chapter 6 of this report).

2.6 Family structure

The family structure of Parramatta River Catchment in 2011 is shown in Table 7 (ABS 2012d). These figures are for just the Parramatta River Catchment area (refer Section 1.3 of this report).

Table 7 Family structure of Parramatta River Catchment in 2011 (ABS 2012d)

Couple families with no children	67868
Couple families with children	102912
One parent families	30392
Other families	4561
Total families	205733

A detailed family structure table can be found in the Appendix of tables (Chapter 6 of this report).

2.7 Indigenous population

The Indigenous population of Parramatta River Catchment in 2011 is shown in Table 8 (ABS 2012a). These figures are for just the Parramatta River Catchment area (refer Section 1.3 of this report).

Table 8 Indigenous population of Parramatta River Catchment in 2011 (ABS 2012a)

Aboriginal population	5035
Torres Strait Islander population	260
Both Aboriginal and Torres Strait Islander population	122
Total Indigenous population	5417
Total catchment population	785083
Indigenous proportion of total catchment population	0.69%

A detailed table showing the gender balance of the Indigenous population in 2011 can be found in the Appendix of tables (Chapter 6 of this report).

2.8 Ethnicity (country of birth)

The country of birth of people in Parramatta River Catchment in 2011 is shown in Table 9 (ABS 2012e). These figures are for just the Parramatta River Catchment area (refer Section 1.3 of this report).

The ten countries from which the highest proportion of people born outside Australia in Parramatta River Catchment originate are (in order of highest to lowest proportion):

1. China excluding Special Administrative Regions and Taiwan
2. India
3. United Kingdom, Channel Islands and Isle of Man
4. Lebanon
5. Republic of South Korea
6. Vietnam
7. New Zealand
8. Philippines
9. Italy
10. Sri Lanka

Table 9 Country of birth of people in Parramatta River Catchment in 2011 listed in order of highest to lowest number of people (ABS 2012e)

Country of birth	People in Parramatta River Catchment	Proportion of Catchment population
Australia	405104	51.60%
China excluding Special Administrative Regions and Taiwan	48571	6.19%
India	38210	4.87%

Country of birth	People in Parramatta River Catchment	Proportion of Catchment population
United Kingdom, Channel Islands and Isle of Man	20138	2.57%
Lebanon	18666	2.38%
Korea Republic of South	17290	2.20%
Vietnam	13035	1.66%
New Zealand	12771	1.63%
Philippines	11913	1.52%
Italy	11890	1.51%
Sri Lanka	10970	1.40%
Hong Kong Special Administrative Region of China	9229	1.18%
Turkey	5716	0.73%
Malaysia	5508	0.70%
Fiji	5430	0.69%
Greece	4483	0.57%
Indonesia	3886	0.50%
South Africa	3434	0.44%
Iraq	3288	0.42%
Malta	3065	0.39%
Egypt	2782	0.35%
Croatia	2707	0.34%
Germany	2669	0.34%
United States of America	2590	0.33%
Ireland	2487	0.32%
Poland Persons	2367	0.30%
Thailand	2153	0.27%
Singapore	1921	0.24%
Japan	1363	0.17%
Bosnia and Herzegovina	1241	0.16%
Netherlands	1207	0.15%
Canada	1153	0.15%
South Eastern Europe not further defined	1017	0.13%
Former Yugoslav Republic of Macedonia	962	0.12%
Cambodia	808	0.10%
Born elsewhere	58747	7.48%
Country of birth not stated	46274	5.89%

2.9 Language spoken at home

The language spoken at home by people in Parramatta River Catchment in 2011 is shown in Table 10 (ABS 2012f). These figures are for just the Parramatta River Catchment area (refer Section 1.3 of this report).

The ten languages other than English spoken at home by the highest proportion of people in Parramatta River Catchment are (in order of highest to lowest proportion):

1. Arabic
2. Chinese Languages – Mandarin
3. Chinese Languages - Cantonese
4. Korean
5. Italian
6. Indo Aryan Languages – Other
7. Indo Aryan Languages – Hindi
8. Tamil
9. Vietnamese
10. Greek

Table 10 Language spoken at home by people in Parramatta River Catchment in 2011 listed in order of highest to lowest number of people (ABS 2012f)

Language spoken at home	People in Parramatta River Catchment	Proportion of Catchment population
English only	377668	48.11%
Arabic	53909	6.87%
Chinese Languages – Mandarin	42437	5.41%
Chinese Languages – Cantonese	38442	4.90%
Korean	20566	2.62%
Italian	19391	2.47%
Indo Aryan Languages – Other	16452	2.10%
Indo Aryan Languages – Hindi	14418	1.84%
Tamil	12700	1.62%
Vietnamese	12238	1.56%
Greek	11743	1.50%
Turkish	10195	1.30%
Spanish	7618	0.97%
Indo Aryan Languages – Punjabi	6660	0.85%
Iranic Languages - Persian excluding Dari	6595	0.84%
Southeast Asian Austronesian Languages – Tagalog	6184	0.79%
Chinese Languages – Other	4756	0.61%
Indo Aryan Languages – Urdu	4406	0.56%
Croatian	4362	0.56%
Southeast Asian Austronesian Languages – Filipino	3845	0.49%
Iranic Languages – Dari	3655	0.47%
Indo Aryan Languages – Bengali	3555	0.45%
Southeast Asian Austronesian Languages – Indonesian	3555	0.45%
Indo Aryan Languages – Sinhalese	2916	0.37%
Maltese	2634	0.34%
Polish	2502	0.32%

Language spoken at home	People in Parramatta River Catchment	Proportion of Catchment population
Russian	2451	0.31%
Serbian	2246	0.29%
Thai	2033	0.26%
German	2021	0.26%
French	1992	0.25%
Portuguese	1702	0.22%
Japanese	1610	0.21%
Macedonian	1485	0.19%
Samoan	1286	0.16%
Iranic Languages – Other	1251	0.16%
Hungarian	941	0.12%
Dutch	729	0.09%
Assyrian	722	0.09%
Southeast Asian Austronesian Languages – Other	547	0.07%
Khmer	368	0.05%
Australian Indigenous Languages	29	0.00%
Other languages	26090	3.32%
Language spoken at home not stated	44084	5.62%

3 Income, employment, business and education profile

3.1 Personal income

The numbers and proportions of people receiving various amounts of personal weekly income in Parramatta River Catchment in 2011 are shown in Table 11 (ABS 2012g). These figures are for just the Parramatta River Catchment area (refer Section 1.3 of this report).

Table 11 Numbers and proportions of people receiving various amounts of personal weekly income in Parramatta River Catchment in 2011 (ABS 2012g)

Negative or nil income	71164	11.15%
\$1-\$199	45771	7.17%
\$200-\$299	61259	9.60%
\$300-\$399	55525	8.70%
\$400-\$599	63703	9.98%
\$600-\$799	60672	9.50%
\$800-\$999	50938	7.98%

\$1000-\$1249	49737	7.79%
\$1250-\$1499	36668	5.74%
\$1500-\$1999	45091	7.06%
\$2000 or more	45785	7.17%
Personal income not stated	52040	8.15%

Detailed tables showing gender breakdown for personal weekly income can be found in the Appendix of tables (Chapter 6 of this report).

3.2 Household income

The numbers and proportions of households receiving various amounts of weekly income in Parramatta River Catchment in 2011 are shown in Table 12 (ABS 2012h). These figures are for just the Parramatta River Catchment area (refer Section 1.3 of this report).

Table 12 Numbers and proportions of households receiving various amounts of weekly income in Parramatta River Catchment in 2011 (ABS 2012h)

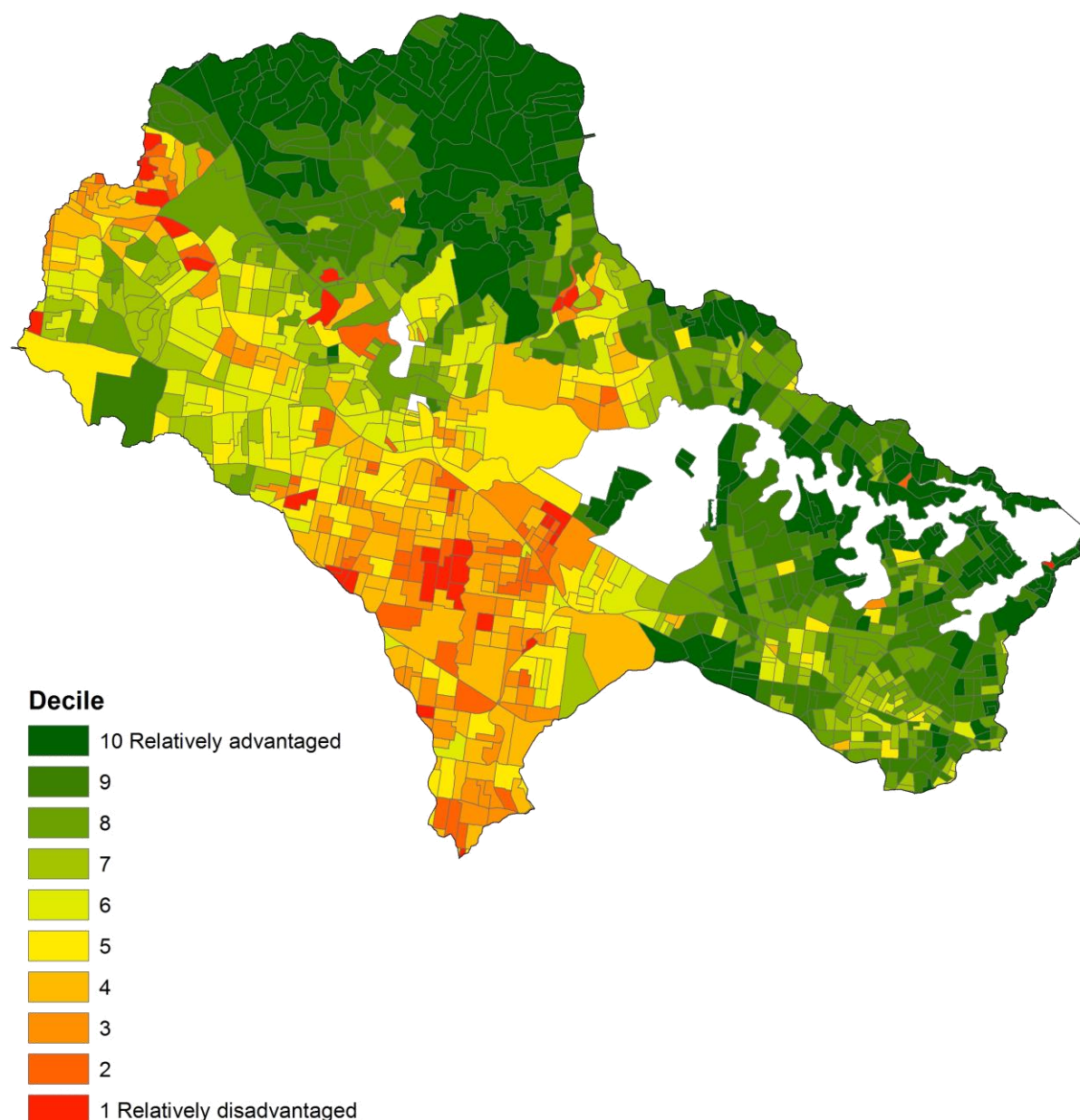
Negative or nil income	4570	1.71%
\$1-\$199	4237	1.59%
\$200-\$299	6877	2.58%
\$300-\$399	13614	5.10%
\$400-\$599	19994	7.49%
\$600-\$799	19314	7.23%
\$800-\$999	18494	6.93%
\$1000-\$1249	20110	7.53%
\$1250-\$1499	18729	7.02%
\$1500-\$1999	31065	11.64%
\$2000-\$2499	22536	8.44%
\$2500-\$2999	24639	9.23%
\$3000-\$3499	15018	5.63%
\$3500-\$3999	7700	2.88%
\$4000 or more	13939	5.22%
Partial income stated	19967	7.48%
All incomes not stated	6166	2.31%

Detailed tables showing the family household and non-family household breakdown for household weekly income can be found in the Appendix of tables (Chapter 6 of this report).

3.3 Index of advantage/disadvantage

The Index of Relative Socio-economic Advantage and Disadvantage deciles for Census Districts across Parramatta River Catchment in 2006 are shown in Figure 3 (ABS 2008). These figures are for just the Parramatta River Catchment area (refer Section 1.3 of this report).

Figure 3 Index of Relative Socio-economic Advantage and Disadvantage deciles for Census Districts across Parramatta River Catchment in 2006 (ABS 2008)



The Index of Relative Socio-economic Advantage and Disadvantage is a continuum of advantage (high score values) to disadvantage (low score values), and is derived from Australian Bureau of Statistics (ABS) Census variables related to both advantage and disadvantage (ABS 2008). It is one of four Socio-Economic Indexes for Areas (SEIFA). SEIFA uses a broad definition of relative socio-economic disadvantage in terms of people's

access to material and social resources and their ability to participate in society. While SEIFA represents an average of all people living in an area, SEIFA does not represent the individual situation of each person.

The ABS applies deciles to SEIFA scores. All areas are ordered from lowest to highest score, and the lowest 10% of areas are given a decile number of 1 and so on, up to the highest 10% of areas which are given a decile number of 10. This means that areas are divided up into ten groups, depending on their score. Not all Census Districts in the Catchment have SEIFA scores because the ABS does not give scores to around 3% of Census Districts due to low populations or high levels of non-response in a Census.

3.4 Employment

The numbers and proportions of employed people in Parramatta River Catchment in 2006 are shown in Table 13 (ABS 2012i). These figures are for just the Parramatta River Catchment area (refer Section 1.3 of this report).

Table 13 Numbers and proportions of employed people in Parramatta River Catchment in 2006 (ABS 2012i)

Employed, worked full-time	227620	30.81%
Employed, worked part-time	87729	11.88%
Employed, away from work	20907	2.83%
Total Employed	336256	45.52%
Unemployed, looking for full-time work	12357	1.67%
Unemployed, looking for part-time work	7951	1.08%
Total Unemployed	20308	2.75%
Not in the labour force	199843	27.05%
Not stated	42989	5.82%
Not applicable	139282	18.86%

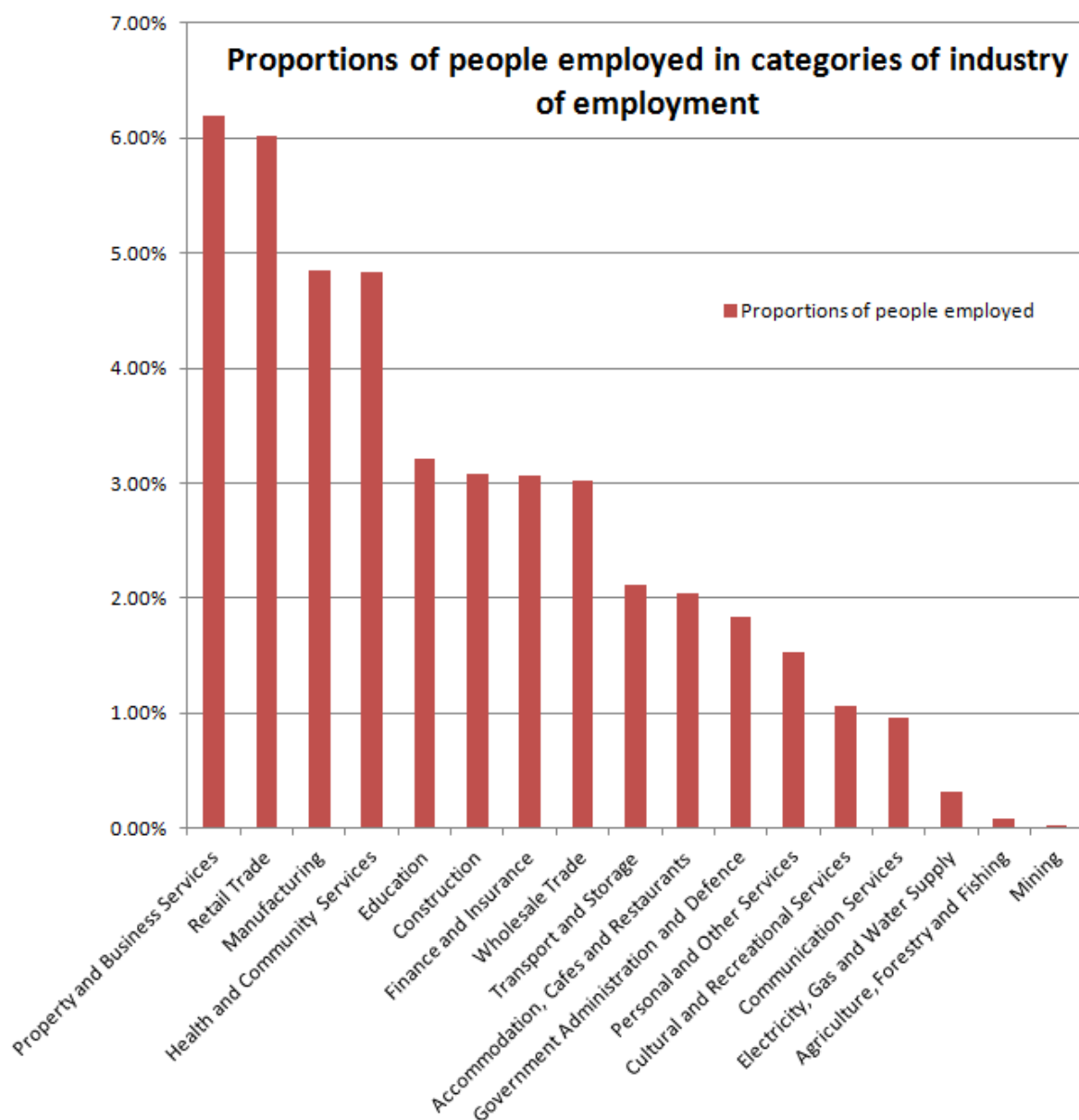
3.5 Industry of employment

The numbers and proportions of people in each of 17 categories of industry of employment in Parramatta River Catchment in 2006 are shown in Table 14 and Figure 4 (ABS 2012i). These figures are for just the Parramatta River Catchment area (refer Section 1.3 of this report).

Table 14 Numbers and proportions of employed people in each of 17 categories of industry of employment in Parramatta River Catchment in 2006 (ABS 2012i)

Property and Business Services	45717	6.19%
Retail Trade	44426	6.01%
Manufacturing	35818	4.85%
Health and Community Services	35756	4.84%
Education	23682	3.21%
Construction	22755	3.08%
Finance and Insurance	22599	3.06%
Wholesale Trade	22268	3.01%
Transport and Storage	15563	2.11%
Accommodation, Cafes and Restaurants	15092	2.04%
Government Administration and Defence	13522	1.83%
Personal and Other Services	11312	1.53%
Cultural and Recreational Services	7819	1.06%
Communication Services	7087	0.96%
Electricity, Gas and Water Supply	2282	0.31%
Agriculture, Forestry and Fishing	586	0.08%
Mining	210	0.03%
Non-Classifiable Economic Units	4373	0.59%
Not stated	5521	0.75%
Not applicable	402301	54.46%
Total	738689	

Figure 4 Proportions of employed people in each of 17 categories of industry of employment in Parramatta River Catchment in 2006 (ABS 2012i)



3.6 Occupation

The numbers and proportions of employed people in each of nine categories of occupation in Parramatta River Catchment in 2006 are shown in Table 15 (ABS 2012i). These figures are for just the Parramatta River Catchment area (refer Section 1.3 of this report).

Table 15 Numbers and proportions of employed people in each of nine categories of occupation in Parramatta River Catchment in 2006 (ABS 2012i)

Professionals	80903	10.95%
Intermediate Clerical, Sales and Service Workers	59935	8.11%
Associate Professionals	39633	5.36%
Tradespersons and Related Workers	31839	4.31%
Elementary Clerical, Sales and Service Workers	30435	4.12%
Managers and Administrators	29721	4.02%
Intermediate Production and Transport Workers	23074	3.12%
Labourers and Related Workers	21421	2.90%
Advanced Clerical and Service Workers	11955	1.62%
Not stated	3229	0.44%
Inadequately described	4351	0.59%
Not applicable	402239	54.45%
Total	738735	

3.7 Business numbers and turnover

The numbers of businesses in various turnover size ranges for 19 industry categories in Parramatta River Catchment in 2011 are shown in Table 16 and Figure 5 (ABS 2012j).

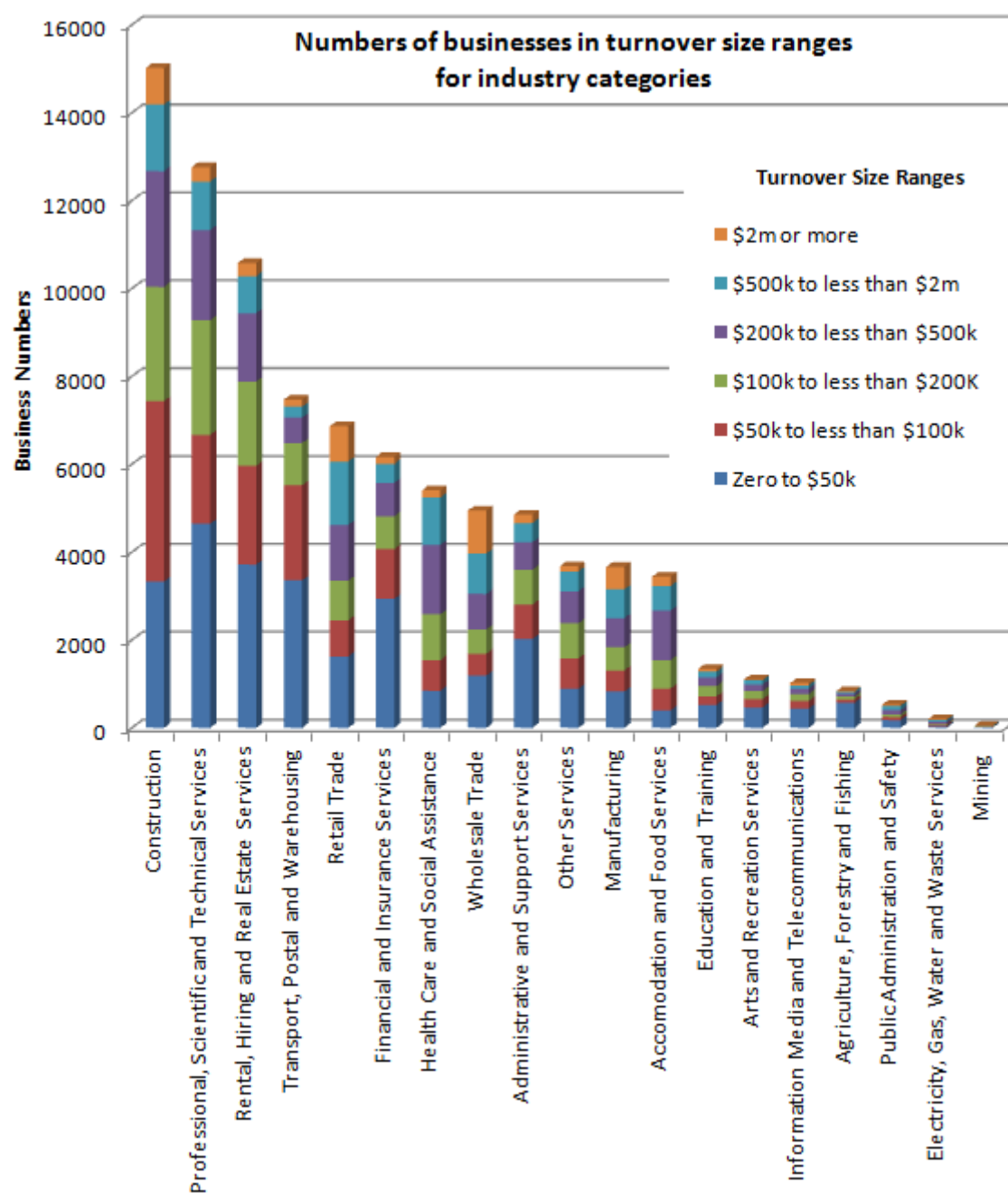
The smallest scale at which Australian Bureau of Statistics (ABS) counts of Australian businesses are available is Statistical Area 2 (SA2), and this data has been used to prepare Table 16 and Figure 5. Due to the nature of the data sources for these counts (primarily the Australian Business Register) multi-location businesses can only be attributed by the ABS to a single SA2. Because of this, business counts at the SA2 level do not necessarily reflect all business operations within that SA2, and this needs to be considered when using the information in Table 16 and Figure 5.

Additionally, because SA2s are larger than the Statistical Area 1s (SA1s) and Census Districts (CDs) used in compiling most of the other information in this report, the SA2s overlap the boundary of the Parramatta River Catchment to a greater extent. Because of this a proportion of the counts in Table 16 and Figure 5 relates to areas outside Parramatta River Catchment, so use of the counts needs to consider the information in Section 1.3 of this report.

Table 16 Numbers of businesses in various turnover size ranges for 19 industry categories in Parramatta River Catchment in 2011 listed in order of the industry categories with highest to lowest total business numbers (ABS 2012j)

Industry	Numbers of businesses in turnover size ranges						
	Zero to \$50k	\$50k to less than \$100k	\$100k to less than \$200K	\$200k to less than \$500k	\$500k to less than \$2m	\$2m or more	Total
Construction	3333	4102	2601	2635	1516	831	15018
Professional, Scientific and Technical Services	4643	2024	2608	2051	1106	331	12763
Rental, Hiring and Real Estate Services	3716	2247	1915	1559	841	303	10581
Transport, Postal and Warehousing	3358	2165	961	580	245	160	7469
Retail Trade	1626	820	900	1270	1443	808	6867
Financial and Insurance Services	2937	1130	749	760	428	160	6164
Health Care and Social Assistance	844	697	1043	1575	1084	162	5405
Wholesale Trade	1191	495	552	809	919	980	4946
Administrative and Support Services	2018	783	796	626	438	191	4852
Other Services	888	688	804	728	447	123	3678
Manufacturing	826	481	526	666	653	509	3661
Accommodation and Food Services	393	502	643	1129	560	214	3441
Education and Training	519	194	237	199	130	60	1339
Arts and Recreation Services	463	188	184	147	101	18	1101
Information Media and Telecommunications	435	173	159	123	76	54	1020
Agriculture, Forestry and Fishing	570	78	66	61	48	12	835
Public Administration and Safety	175	72	55	102	95	30	529
Electricity, Gas, Water and Waste Services	34	33	21	48	42	21	199
Mining	22	3	9	3	3	3	43
Total	27991	16875	14829	15071	10175	4970	89911

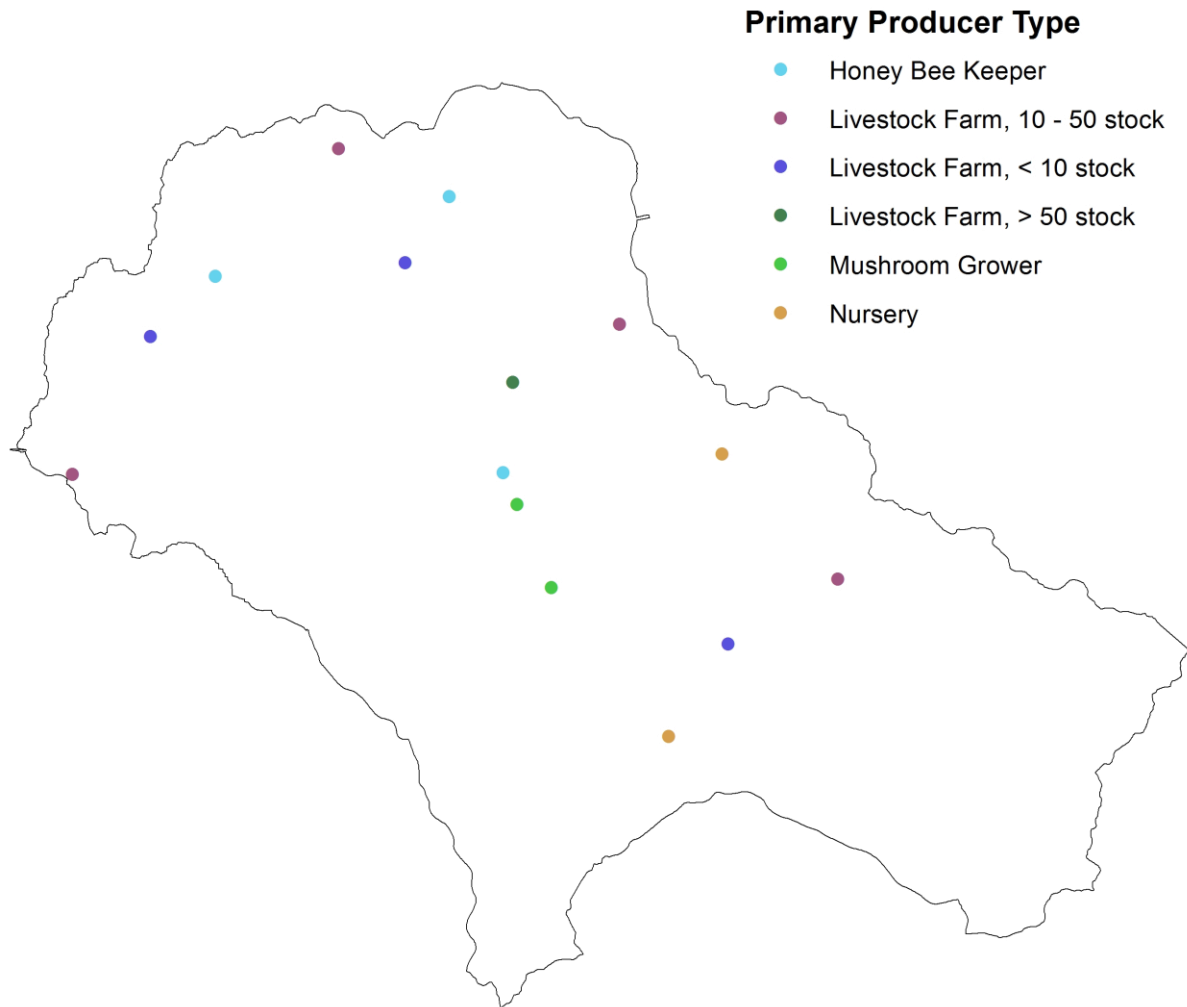
Figure 5 Numbers of businesses in various turnover size ranges for 19 industry categories in Parramatta River Catchment in 2011 (ABS 2012j)



3.8 Primary production

Primary production is not significant in Parramatta River Catchment (Singh & Ahmed 2006). The locations and types of primary producers in Parramatta River Catchment are shown in Figure 6.

Figure 6 Locations and types of primary producers in Parramatta River Catchment



3.9 Level of education

The numbers and proportions of people with non-school qualifications in Parramatta River Catchment in 2006 are shown in Table 17 (ABS 2012b). These figures are for just the Parramatta River Catchment area (refer Section 1.3 of this report).

Table 17 Numbers and proportions of people with non-school qualifications in Parramatta River Catchment in 2006 (ABS 2012b)

Postgraduate Degree Level	29382	3.98%
Graduate Diploma and Graduate Certificate Level	8177	1.11%
Bachelor Degree Level	94986	12.86%
Advanced Diploma and Diploma Level	48400	6.55%
Certificate Level	79089	10.71%
Level of education not stated	73707	9.98%
Level of education inadequately described	10228	1.38%
Not applicable	394699	53.43%

3.10 Attendance at educational institutions

The numbers and proportions of people attending educational institutions in Parramatta River Catchment in 2011 are shown in Table 18 (ABS 2012k). These figures are for just the Parramatta River Catchment area (refer Section 1.3 of this report).

Table 18 Numbers and proportions of people attending educational institutions in Parramatta River Catchment in 2011 (proportions are of total attendance) (ABS 2012k)

Pre school	12656	5.07%
Infants and Primary school	56977	22.84%
Secondary school	48254	19.34%
Technical or Further Educational institution	19785	7.93%
University or other Tertiary Institution	46183	18.51%
Other type of educational institution	8343	3.34%
Type of educational institution not stated	57315	22.97%
Total attendance	249513	

A detailed table showing a breakdown of the different types of Infants and Primary schools and Secondary schools attended can be found in the Appendix of tables (Chapter 6 of this report).

4 Residential profile

4.1 Dwelling types

The numbers and proportions of different dwelling types in Parramatta River Catchment in 2011 are shown in Table 19 (ABS 2012l). The numbers of people living in each of those dwelling types in 2011 are shown in Table 20 (ABS 2012l). These figures are for just the Parramatta River Catchment area (refer Section 1.3 of this report).

Table 19 Numbers and proportions of different dwelling types in Parramatta River Catchment in 2011 (ABS 2012l)

Separate houses	150071	52.91%
Semi detached, row or terrace houses, townhouses	35468	12.51%
Flats, units, or apartments	80082	28.24%
Other dwellings	889	0.31%
Dwelling structure not stated	458	0.16%
Total occupied dwellings	266968	94.13%
Unoccupied private dwellings	16640	5.87%
Total private dwellings	283608	

Table 20 Numbers of people living in each of the different dwelling types in Parramatta River Catchment in 2011 (ABS 2012l)

People in separate houses	458626
People in semi detached, row or terrace houses, townhouses	91713
People in flats, units, or apartments	176806
People in other dwellings	2133
People in dwelling structure not stated	973
Total people in private dwellings	730251

4.2 Home ownership

The numbers and proportions of dwellings owned and rented in Parramatta River Catchment in 2011 are shown in Table 21 (ABS 2012m). These figures are for just the Parramatta River Catchment area (refer Section 1.3 of this report).

Table 21 Numbers and proportions of dwellings owned and rented in Parramatta River Catchment in 2011 (ABS 2012m)

Owned outright	78675	29.46%
Owned with a mortgage	88355	33.09%
Rented	91225	34.16%
Other tenure type	2143	0.80%
Tenure type not stated	6646	2.49%

A detailed table showing numbers of dwellings owned and rented can be found in the Appendix of tables (Chapter 6 of this report).

4.3 Home internet connection

The numbers and proportions of types of home internet connection in dwellings in Parramatta River Catchment in 2011 are shown in Table 22 (ABS 2012n). These figures are for just the Parramatta River Catchment area (refer Section 1.3 of this report).

Table 22 Numbers and proportions of types of home internet connection in dwellings in Parramatta River Catchment in 2011 (ABS 2012n)

Broadband	198651	74.41%
Dial up	6133	2.30%
Other type of internet connection	8524	3.19%
Total dwellings with internet connection	213308	79.90%
No internet connection	43894	16.44%
Internet connection not stated	9757	3.65%

4.4 Liveability index

The 2008 BankWest Quality of Life survey (BankWest 2008a, 2008b, 2008c) scored the performance of 590 Local Government Areas across Australia including 152 in New South Wales (NSW), using ten variables which contribute to the quality of life including health, home ownership, house size, internet access, employment rates, earnings, education, community volunteering and crime rates.

The survey rankings for Local Government Areas across Parramatta River Catchment are shown in Table 23 (BankWest 2008c). The rankings are for the whole of each Local Government Area, including parts of Local Government Areas outside Parramatta River Catchment, so their use needs to consider the information in Section 1.3 of this report.

Parramatta River Catchment has a great divergence in Quality of Life rankings, with Local Government Areas in both the top ten and bottom ten in NSW and covering a full spectrum between. The Hunters Hills Local Government Area had the second best quality of life ranking in both Australia and NSW, while the Auburn Local Government Area ranked 145 out of the 152 Local Government Areas in NSW and 562 out of the 590 Local Government Areas nationally.

Table 23 Quality of Life survey rankings for Local Government Areas across Parramatta River Catchment (listed in order of ranking, where 1 is the highest quality of life and 590 the lowest) (BankWest 2008c)

Local Government	Quality of Life survey ranking
Hunters Hill	2
The Hills Shire	12
Canada Bay	121
Ryde	137

Local Government	Quality of Life survey ranking
Leichhardt	182
Strathfield	310
Ashfield	406
Blacktown	430
Burwood	472
Bankstown	473
Parramatta	494
Holroyd	519
Marrickville	538
Auburn	562

Crime rates were one of the ten variables addressed in the Quality of Life survey. A breakdown of numbers of different types of crime in each of the Local Government Areas across Parramatta River Catchment can be found in the Appendix of tables (Chapter 6 of this report).

4.5 Gentrification

The Australian Housing and Urban Research Institute (AHURI) study *Gentrification and displacement: the household impacts of neighbourhood change* (AHURI 2011) finds that the Marrickville and Randwick Local Government Areas and the Concord part of the Canada Bay Local Government Area experienced the most rapid gentrification in the Sydney region in the decade to 2006.

Gentrification refers to the migration of higher income households to lower income neighbourhoods. It has three key effects (AHURI 2011):

1. Greater pressure on low income renters who either pay higher rents or are dislocated by the market to lower cost areas, either into private renting, presenting to social housing providers or becoming homeless.
2. Low income owners and renters are diverted over time to other locations with the subsequent loss of social diversity and reducing accessibility to employment (for parents) and education (for children) opportunities.
3. Changing communities and service infrastructures which often no longer cater for lower income residents.

Canada Bay is located wholly within Parramatta River Catchment and Marrickville is located partly within the catchment (refer Section 1.3 of this report). Because gentrification causes low income owners and renters to be diverted over time to other locations the impacts of the gentrification of these areas is likely to be being felt in other parts of Parramatta River Catchment. The study *Gentrification and displacement: the household impacts of neighbourhood change* (AHURI 2011) includes recommended policy responses to gentrification.

5 Environmental engagement profile

5.1 Level of volunteering

The numbers and proportions of volunteers in Parramatta River Catchment in 2011 are shown in Table 24 (ABS 2012o). The information relates to voluntary work for an organisation or group, including groups and organisations both related and not related to the environment.

These figures are for just the Parramatta River Catchment area (refer Section 1.3 of this report). The Australian Bureau of Statistics only collects volunteering information for people aged 15 years and over so the total in Table 24 is smaller than the overall population for the Parramatta River Catchment.

Table 24 Numbers and proportions of volunteers in Parramatta River Catchment in 2011 (ABS 2012o)

Volunteer	90419	14.16%
Not a volunteer	492482	77.15%
Voluntary work not stated	55468	8.69%
Total	638369	

Detailed tables showing breakdowns of volunteers according to gender and age can be found in the Appendix of tables (Chapter 6 of this report).

5.2 Bushcare activity locations

Bushcare activity locations are shown in relation to native vegetation in Figure 7 (DECCW 2009), Endangered Ecological Communities (EECs) in Figure 8 (DECCW 2009), and relative socio-economic advantage and disadvantage deciles in Figure 9 (ABS2008).

Figure 7 Bushcare activity locations in relation to native vegetation (DECCW 2009)

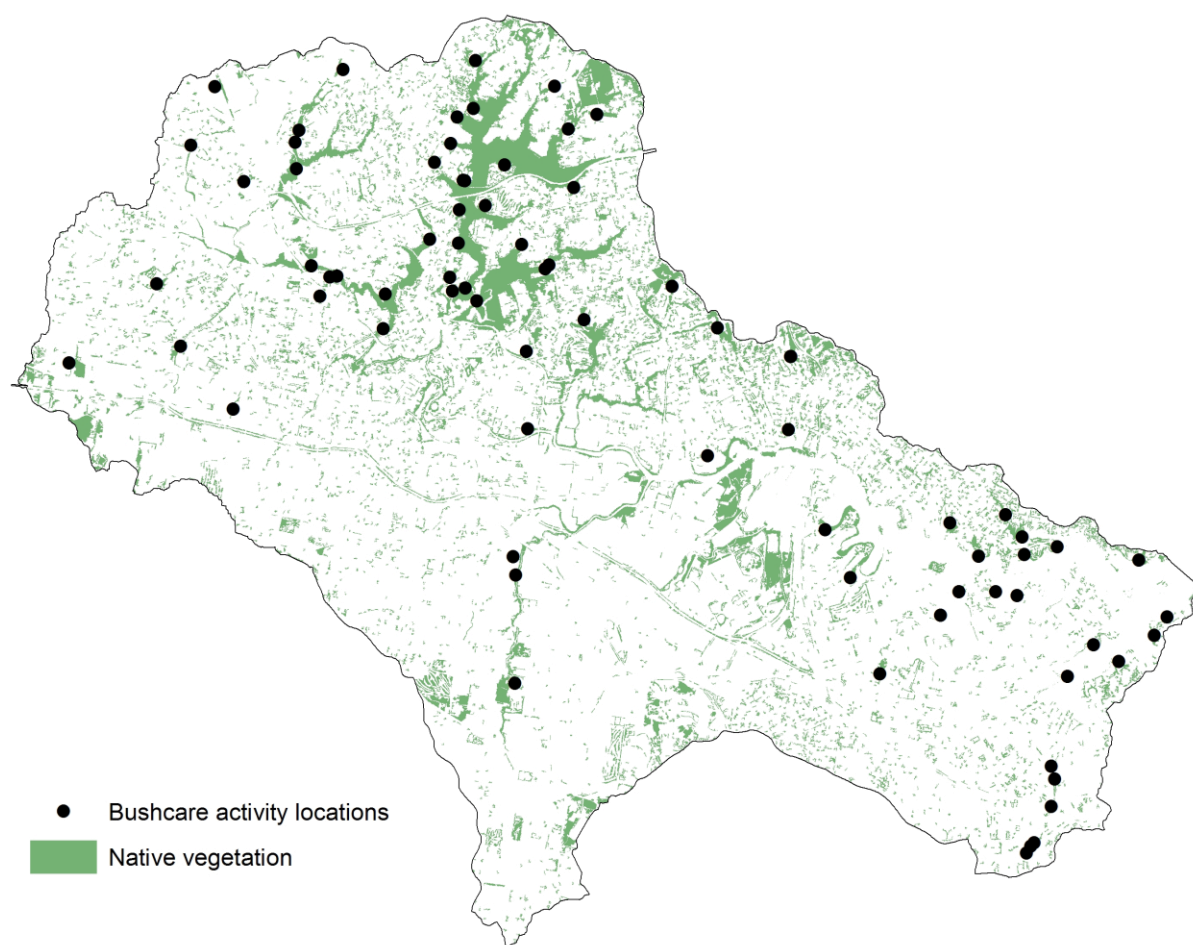


Figure 8 Bushcare activity locations in relation to Endangered Ecological Communities (EECs) (DECCW 2009)

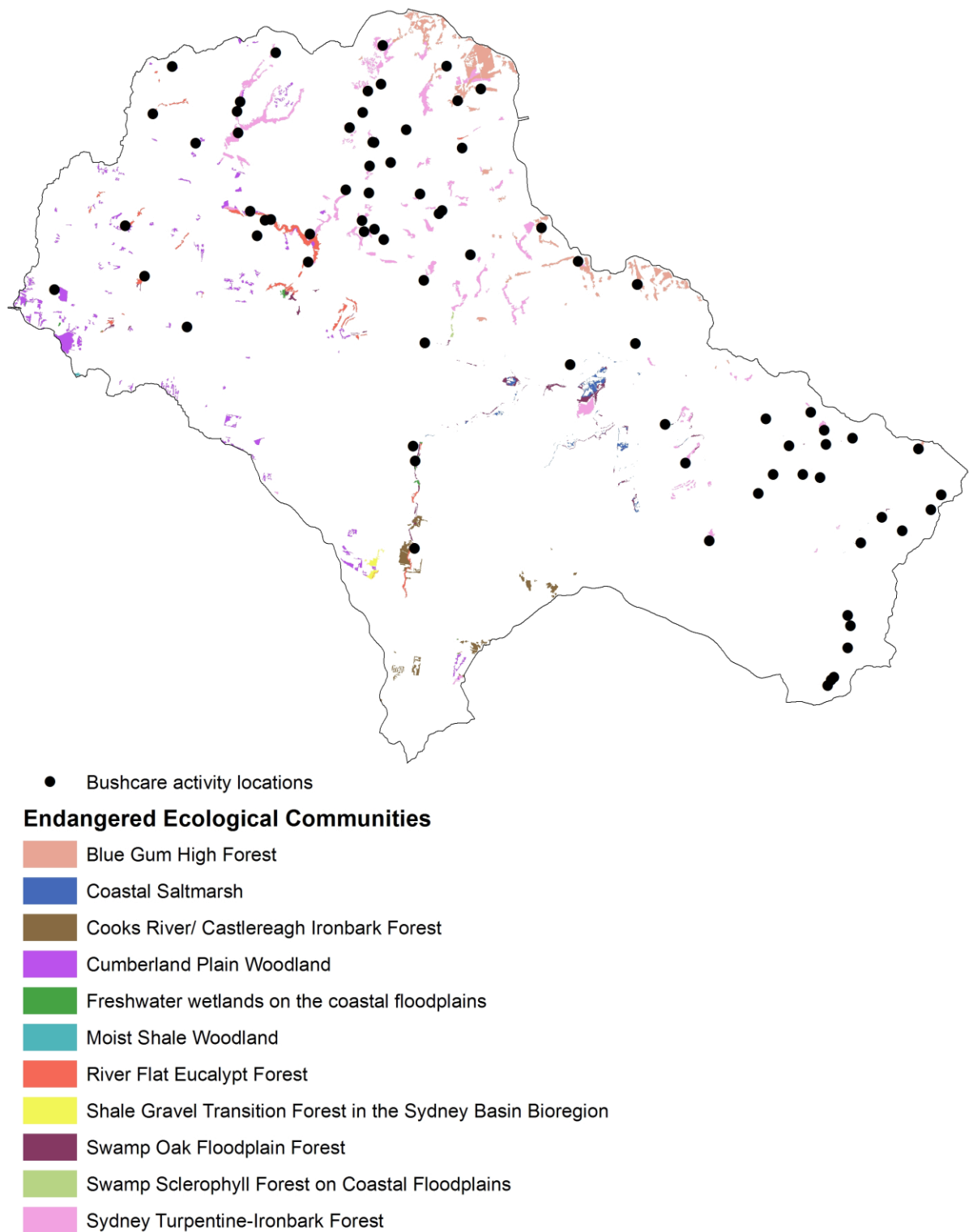
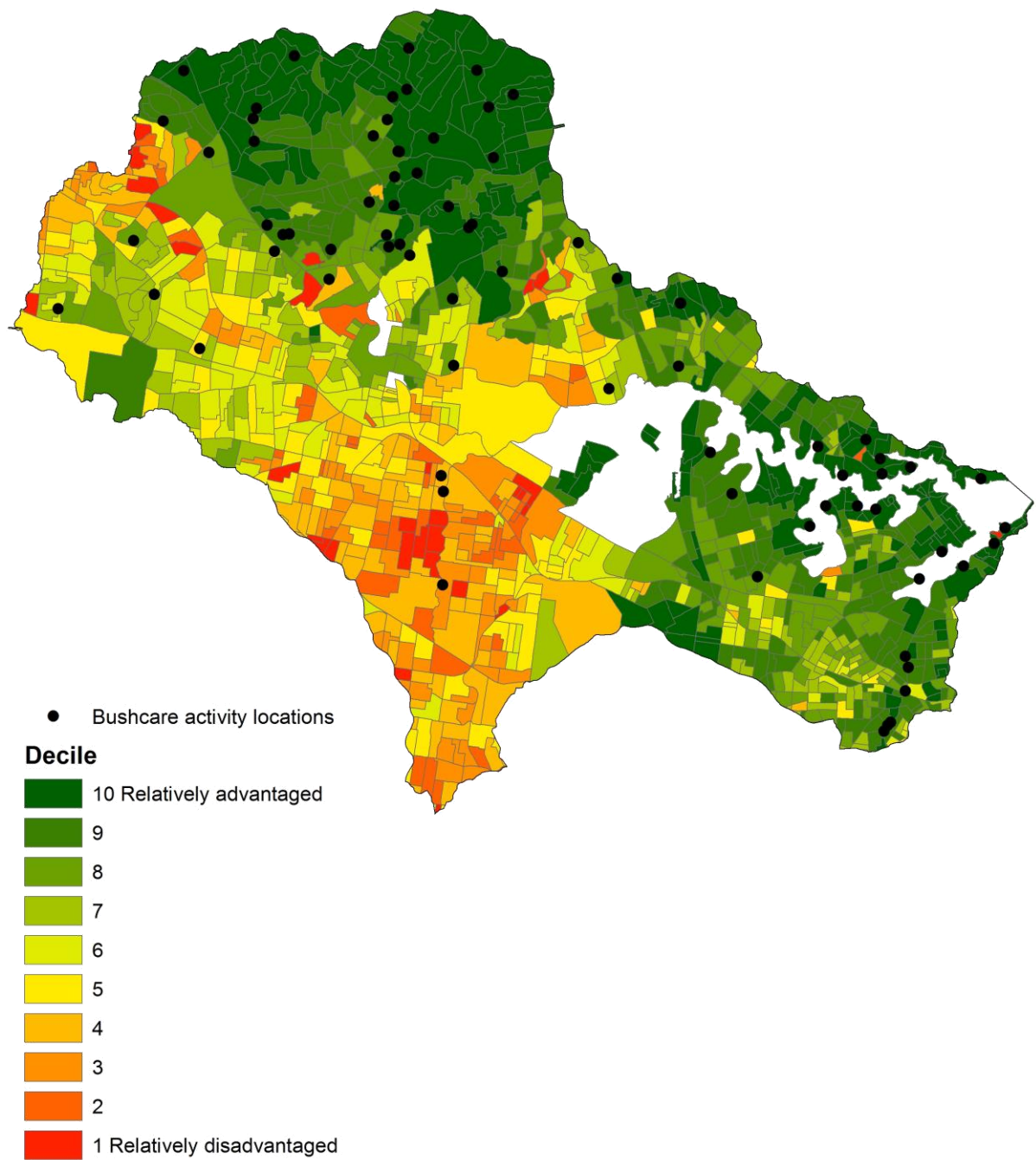


Figure 9 Bushcare activity locations in relation to relative socio-economic advantage and disadvantage deciles (ABS2008)



6 Appendix of tables

6.1 Population profile

Table 25 Annual estimated resident population (ERP) for 2001-2011 for Local Government Areas across Parramatta River Catchment (ABS 2012c)

Local Government	Population 2001	Population 2002	Population 2003	Population 2004	Population 2005	Population 2006	Population 2007 (pr)	Population 2008 (pr)	Population 2009 (pr)	Population 2010 (pr)	Population 2011 (pr)	2001-2011 population increase (pr)	2001-2011 population growth (%) (pr)	Average annual population growth 2001-2011 (%) (pr)
Ashfield	40521	40596	40774	40910	41097	41520	42189	42284	42820	43134	43683	3162	7.8	0.8
Auburn	58678	60441	61819	63780	66351	68231	70575	72866	75165	77011	78286	19608	33.4	2.9
Bankstown	171994	172561	173133	173265	174405	176857	179926	182677	185497	187818	190637	18643	10.8	1.0
Blacktown	264799	268337	270096	273614	276929	280612	285955	292337	298954	306566	312479	47680	18.0	1.7
Burwood	30580	30891	31189	31599	31901	32395	33082	33460	33809	33922	34305	3725	12.2	1.2
Canada Bay	62322	63498	64491	65817	67385	68725	70421	72307	75191	77549	79905	17583	28.2	2.5
Holroyd	89236	89700	90033	90412	91646	93323	95629	97988	99896	101860	103869	14633	16.4	1.5
Hunters Hill	13382	13504	13606	13775	13777	13746	13811	13765	13865	13884	13880	498	3.7	0.4
Leichhardt	50456	50592	51002	51217	51244	51554	52297	53193	54095	54961	55651	5195	10.3	1.0
Marrickville	76743	76287	75497	75091	75220	75546	76832	78244	79402	80664	81489	4746	6.2	0.6
Parramatta	147882	147781	148333	149911	151438	153891	157603	161858	166553	170618	174554	26672	18.0	1.7
Ryde	99151	99386	99615	99774	100188	100962	102746	104502	105499	106947	108371	9220	9.3	0.9
Strathfield	29433	29580	30460	31470	32351	33231	34317	35320	36504	36907	37141	7708	26.2	2.4
The Hills Shire	146045	150928	155413	159084	162386	165143	166634	169557	172853	175145	176986	30941	21.2	1.9

Table 26 Population age distribution (numbers of people) for Parramatta River Catchment in 2006 (ABS 2012b)

0-4 years	5-14 years	15-19 years	20-24 years	25-34 years	35-44 years	45-54 years	55-64 years	65-74 years	75-84 years	85 years and over
48387	90979	47986	55783	119259	113628	97853	73529	45558	33416	12304

Table 27 Population age distribution (proportions of total population) for Parramatta River Catchment in 2006 (ABS 2012b)

0-4 years	5-14 years	15-19 years	20-24 years	25-34 years	35-44 years	45-54 years	55-64 years	65-74 years	75-84 years	85 years and over
6.55%	12.32%	6.50%	7.55%	16.14%	15.38%	13.25%	9.95%	6.17%	4.52%	1.67%

Table 28 Population age distribution (numbers of people) for Parramatta River Catchment in 2011 (ABS 2012a)

0-4 years	5-14 years	15-19 years	20-24 years	25-34 years	35-44 years	45-54 years	55-64 years	65-74 years	75-84 years	85 years and over
55589	90975	46180	57761	137570	116370	102356	80930	50126	32525	14732

Table 29 Population age distribution (proportions of total population) for Parramatta River Catchment in 2011 (ABS 2012a)

0-4 years	5-14 years	15-19 years	20-24 years	25-34 years	35-44 years	45-54 years	55-64 years	65-74 years	75-84 years	85 years and over
7.08%	11.59%	5.88%	7.36%	17.52%	14.82%	13.04%	10.31%	6.38%	4.14%	1.88%

Table 30 Family structure of Parramatta River Catchment in 2011 (ABS 2012d)

Couple family with no children Families	Couple family with no children Persons	Couple family with children under 15 Total Families	Couple family with children under 15 Total Persons	Couple family with no children under 15 Total Families	Couple family with no children under 15 Total Persons	Couple family with children Total Families	Couple family with children Total Persons	One parent family with children under 15 Total Families
67868	136291	68945	277977	33967	119933	102912	397910	13034

One parent family with children under 15 Total Persons	One parent family with no children under 15 Total Families	One parent family with no children under 15 Total Persons	One parent family Total Families	One parent family Total Persons	Other family Families	Other family Persons	Total Families	Total Persons
38642	17358	40508	30392	79150	4561	9956	205733	623307

Table 31 Gender balance of the Indigenous population of Parramatta River Catchment in 2011 (ABS 2012a)

Aboriginal Males	Aboriginal Females	Aboriginal Total	Torres Strait Islander Males	Torres Strait Islander Females	Torres Strait Islander Total	Both Aboriginal and Torres Strait Islander Males	Both Aboriginal and Torres Strait Islander Females	Both Aboriginal and Torres Strait Islander Total	Indigenous Total Males	Indigenous Total Females	Indigenous Total
2490	2545	5035	129	131	260	61	61	122	2680	2737	5417

6.2 Income, employment, business and education profile

Table 32 Numbers of males earning various amounts of personal weekly income in Parramatta River Catchment in 2011 (ABS 2012g)

Negative or nil income	\$1-\$199	\$200-\$299	\$300-\$399	\$400-\$599	\$600-\$799	\$800-\$999	\$1000-\$1249	\$1250-\$1499	\$1500-\$1999	\$2000 or more	Personal income not stated	Total males
28385	17115	26405	21865	27745	30392	27427	27055	20638	26656	32616	27319	313618

Table 33 Numbers of females earning various amounts of personal weekly income in Parramatta River Catchment in 2011 (ABS 2012g)

Negative or nil income	\$1-\$199	\$200-\$299	\$300-\$399	\$400-\$599	\$600-\$799	\$800-\$999	\$1000-\$1249	\$1250-\$1499	\$1500-\$1999	\$2000 or more	Personal income not stated	Total females
42779	28656	34854	33660	35958	30280	23511	22682	16030	18435	13169	24721	324735

Table 34 Numbers of family households earning various amounts of weekly income in Parramatta River Catchment in 2011 (ABS 2012h)

Negative or nil income	\$1-\$199	\$200-\$299	\$300-\$399	\$400-\$599	\$600-\$799	\$800-\$999	\$1000-\$1249	\$1250-\$1499
2247	2365	1531	2607	12901	13264	13093	14239	13889

\$1500-\$1999	\$2000-\$2499	\$2500-\$2999	\$3000-\$3499	\$3500-\$3999	\$4000 or more	Partial income stated	All incomes not stated	Total
24452	21149	19406	14389	7368	13486	18142	3307	197835

Table 35 Numbers of non-family households earning various amounts of weekly income Parramatta River Catchment in 2011 (ABS 2012h)

Negative or nil income	\$1-\$199	\$200-\$299	\$300-\$399	\$400-\$599	\$600-\$799	\$800-\$999	\$1000-\$1249	\$1250-\$1499
2323	1872	5346	11007	7093	6050	5401	5871	4840

\$1500-\$1999	\$2000-\$2499	\$2500-\$2999	\$3000-\$3499	\$3500-\$3999	\$4000 or more	Partial income stated	All incomes not stated	Total
6613	1387	5233	629	332	453	1825	2859	69134

Table 36 Numbers of people attending educational institutions in Parramatta River Catchment in 2011 (ABS 2012k)

Pre school	Infants and Primary Government	Infants and Primary Catholic	Infants and Primary Other Non-Government	Infants and Primary Total	Secondary Government	Secondary Catholic	Secondary Other Non-Government	Secondary Total	Technical or Further Educational institution	University or other Tertiary Institution	Other type of educational institution	Type of educational institution not stated	Total persons
12656	37152	14365	5460	56977	26710	14536	7008	48254	19785	46183	8343	57315	249513

6.3 Residential profile

Table 37 Numbers of dwellings owned and rented in Parramatta River Catchment in 2011 (ABS 2012m)

Owned outright	Owned with a mortgage	Rented Real Estate Agent	Rented State Housing Authority	Rented from a person not in same household	Rented from housing cooperative / community / church group	Rented from other landlord type	Rented landlord type not stated	Rented total	Other tenure type	Tenure type not stated
78675	88355	58820	12845	13879	2115	2191	1375	91225	2143	6646

Table 38 Breakdown of numbers of different types of crime in each of the Local Government Areas across Parramatta River Catchment (ABS 2011d)

Local Government Area	Homicide	Assault	Sexual offences	Robbery	Theft	Fraud	Malicious damage to property	Illicit drug offences	Driving offences
Ashfield	3	226	84	57	923	252	419	86	2,982
Auburn	3	710	75	208	2,579	629	866	394	7,466
Bankstown	0	1,378	148	228	5,259	1,678	2,115	525	14,422
Blacktown	6	3,691	423	407	9,410	2,870	5,756	599	26,388
Burwood	Unavailable	240	34	76	1,383	434	392	151	1,944
Canada Bay	Unavailable	289	47	42	1,557	403	550	86	4,840
Holroyd	4	857	125	153	2,872	707	1,246	198	10,034
Hunter's Hill	0	58	3	5	264	52	168	15	559
Leichhardt	3	398	41	64	1,742	286	770	88	2,859
Parramatta	4	1,691	190	292	5,443	1,615	2,112	546	15,874
Ryde	Unavailable	448	87	66	1,838	674	759	200	6,750
Strathfield	Unavailable	279	28	91	1,277	325	336	146	2,968
The Hills Shire	Unavailable	724	106	62	3,126	727	1,449	122	9,670

6.4 Environmental engagement profile

Table 39 Numbers and ages of all volunteers in Parramatta River Catchment in 2011 (ABS 2012o)

15-19 years Volunteer	20-24 years Volunteer	25-34 years Volunteer	35-44 years Volunteer	45-54 years Volunteer	55-64 years Volunteer	65-74 years Volunteer	75-84 years Volunteer	85 years and over Volunteer	Total Volunteers	Total Persons
7668	8056	15416	17975	17005	12498	7550	3550	701	90419	638369

Table 40 Numbers and ages of male volunteers in Parramatta River Catchment in 2011 (ABS 2012o)

15-19 years Volunteer	20-24 years Volunteer	25-34 years Volunteer	35-44 years Volunteer	45-54 years Volunteer	55-64 years Volunteer	65-74 years Volunteer	75-84 years Volunteer	85 years and over Volunteer	Total Male Volunteers	Total Male Persons
3665	3410	6718	7290	7453	5742	3460	1572	259	39569	313621

Table 41 Numbers and ages of female volunteers in Parramatta River Catchment in 2011 (ABS 2012o)

15-19 years Volunteer	20-24 years Volunteer	25-34 years Volunteer	35-44 years Volunteer	45-54 years Volunteer	55-64 years Volunteer	65-74 years Volunteer	75-84 years Volunteer	85 years and over Volunteer	Total Female Volunteers	Total Female Persons
4003	4646	8698	10685	9552	6756	4090	1978	442	50850	324748

7 Appendix of statistical geography maps

The statistical geographies used in this report are:

1. Collection Districts (CDs) as shown in Figure 10. The Parramatta River Catchment contains 1166 CDs.
2. Statistical Areas Level 1 (SA1s) as shown in Figure 11. The Parramatta River Catchment contains 1857 SA1s.
3. Statistical Areas Level 2 (SA2s) as shown in Figure 12. The Parramatta River Catchment contains all or part of 48 SA2s.
4. Local Government Areas (LGAs) as shown in Figure 13. The Parramatta River Catchment contains all or part of 14 LGAs.

The statistical geographies used in the various sections of this report are listed in Section 1.3.

Figure 10 Collection Districts (CDs) in Parramatta River Catchment

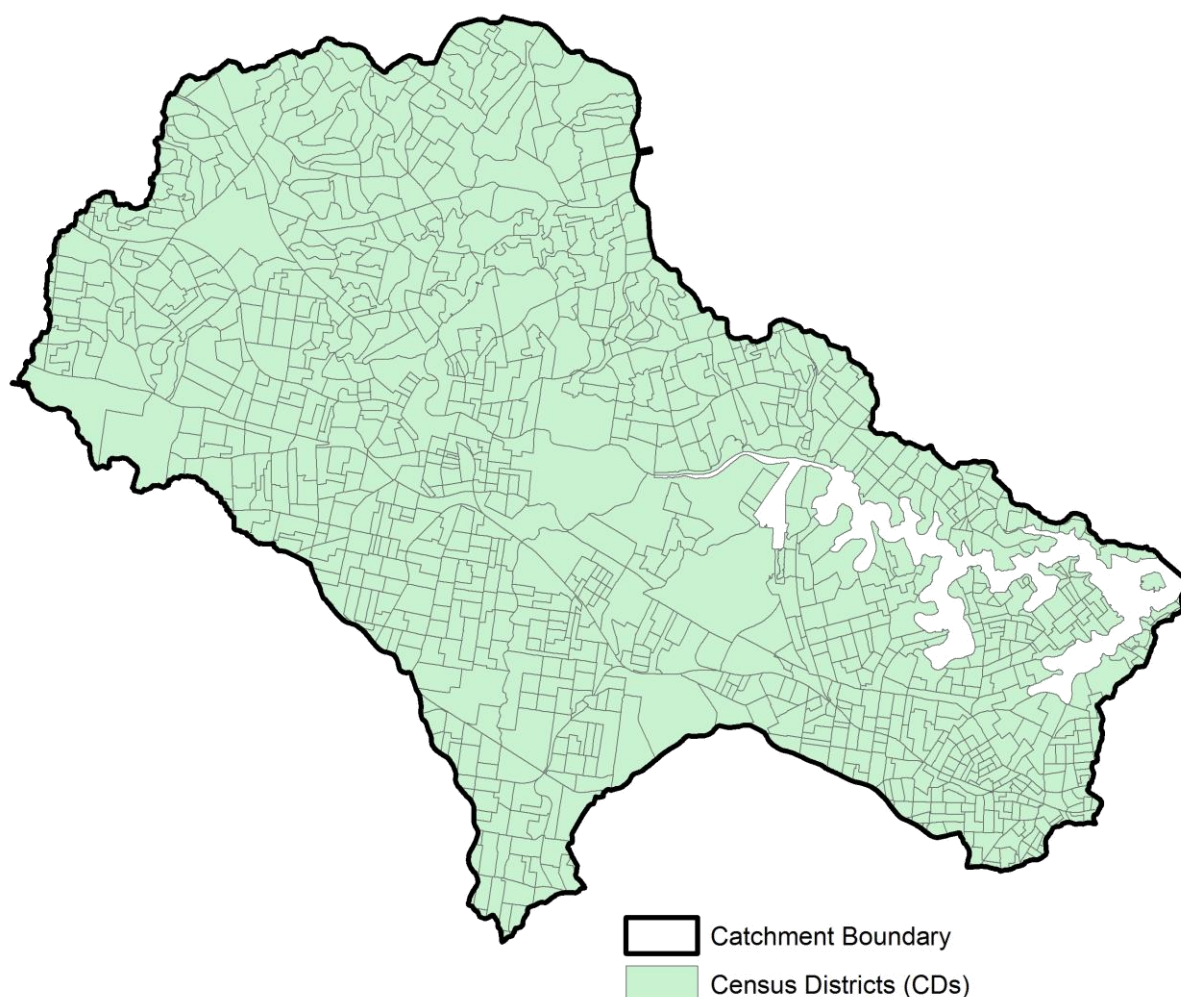


Figure 11 Statistical Areas Level 1 (SA1s) in Parramatta River Catchment

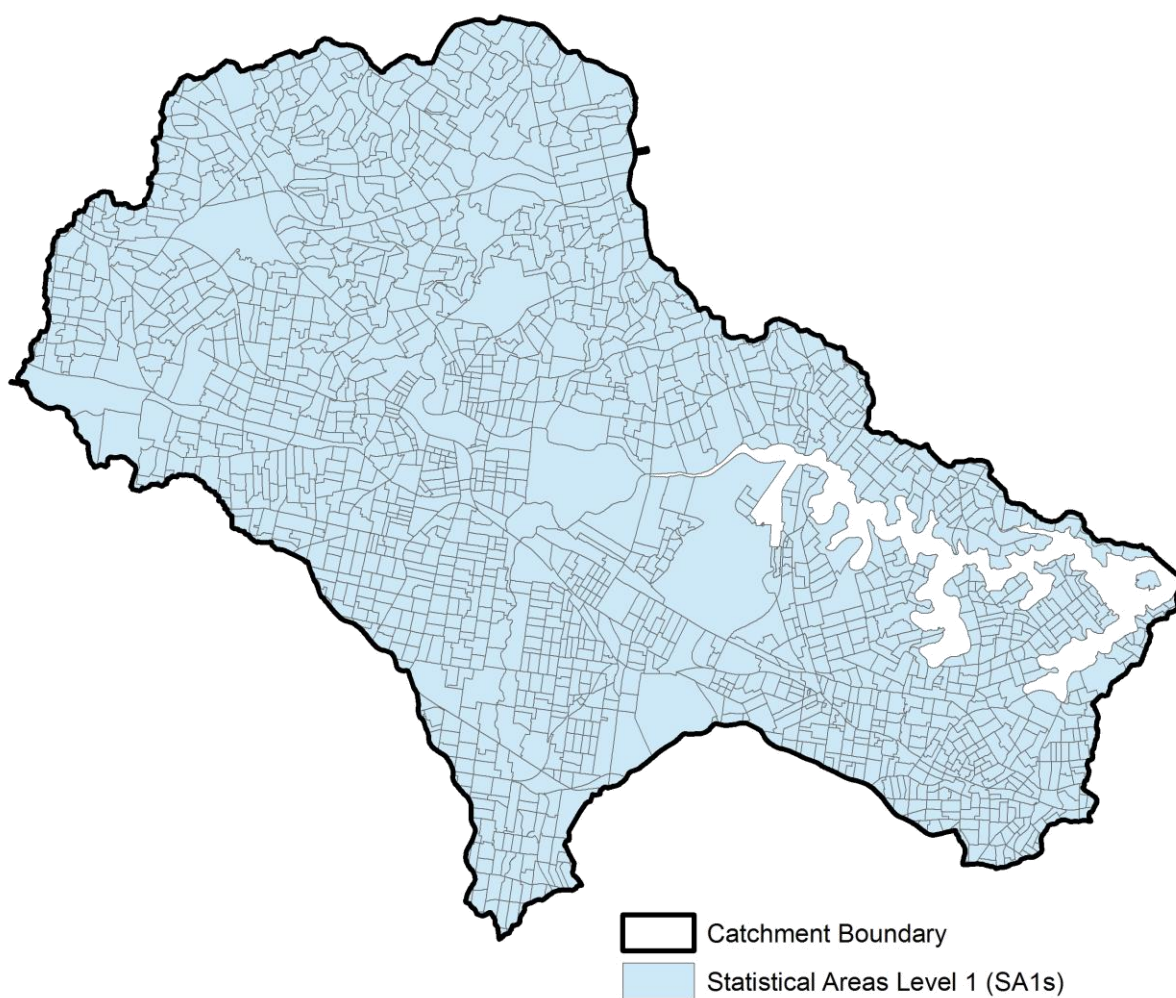


Figure 12 Statistical Areas Level 2 (SA2s) in Parramatta River Catchment

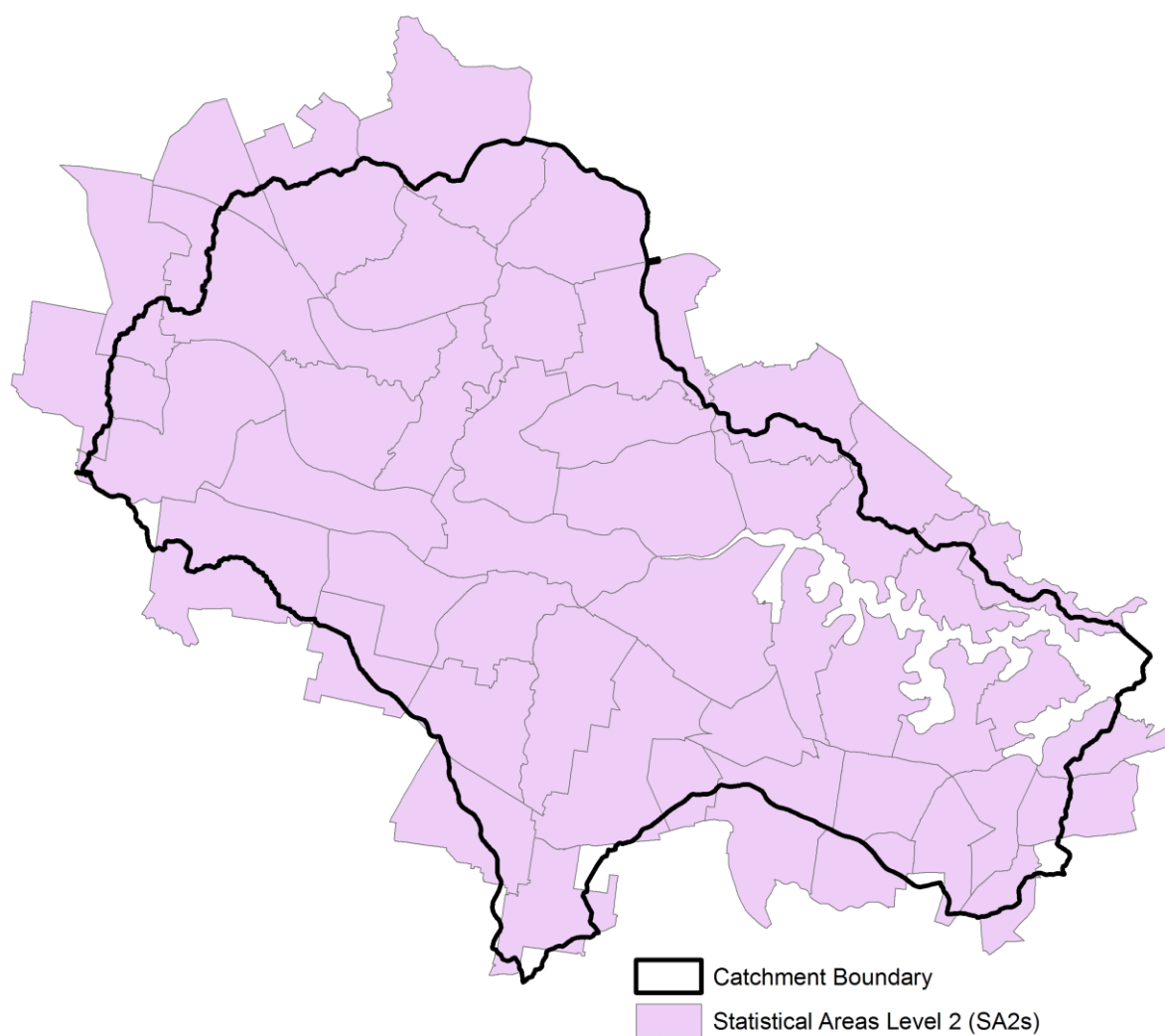
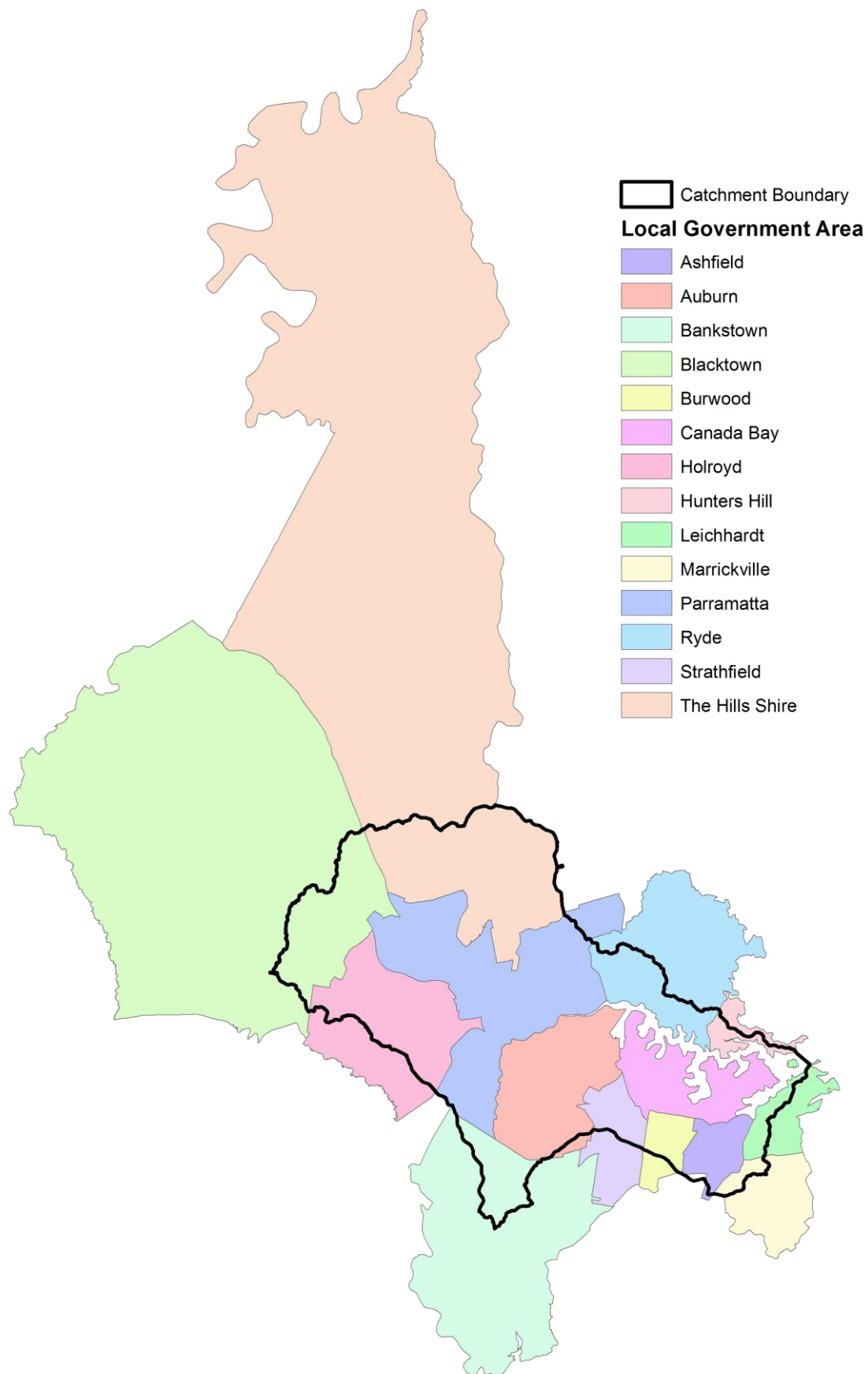


Figure 13 Local Government Areas (LGAs) in Parramatta River Catchment



8 References

Australian Bureau of Statistics, 2008, *Census of Population and Housing: Socio-Economic Indexes for Areas (SEIFA), Australia - Data only, 2006*, cat. no. 2033.0.55.001, viewed 12 August 2012,

www.abs.gov.au/AUSSTATS/abs@.nsf/Lookup/2033.0.55.001Main+Features12006?OpenDocument

Australian Bureau of Statistics, 2011a, *2011 Census Dictionary, Glossary*, 'Australian Statistical Geography Standard (ASGS)', viewed 11 August 2012,

www.abs.gov.au/ausstats/abs@.nsf/Lookup/2901.0Chapter23102011

Australian Bureau of Statistics, 2011b, *2011 Census Dictionary, Glossary*, 'Place of Usual Residence (PURP)', viewed 11 August 2012,

www.abs.gov.au/ausstats/abs@.nsf/Lookup/2901.0Chapter47302011

Australian Bureau of Statistics, 2011c, *2011 Census Dictionary, Glossary*, 'Estimated Resident Population (ERP)', viewed 11 August 2012,

www.abs.gov.au/ausstats/abs@.nsf/Lookup/2901.0Chapter31702011

Australian Bureau of Statistics, 2011d, *NSW State and Regional Indicators, Dec 2010*, cat. no. 1338.1, Crime and Justice Data Cube, 'Table 16, Recorded Criminal Incidents NSW Local Government Areas - 2008', viewed 11 August 2012,

www.abs.gov.au/AUSSTATS/abs@.nsf/Lookup/1338.1Main+Features1Dec%202010?OpenDocument

Australian Bureau of Statistics, 2012a, *Basic Community Profile, Statistical Area Level 1, NSW*, 'Table B01. Selected Person Characteristics by Sex, 2011 Census DataPack', viewed 2 August 2012,

www.abs.gov.au/websitedbs/censushome.nsf/home/datapacks?opendocument&navpos=250

Australian Bureau of Statistics, 2012b, *Relationship database 2006*, TableBuilder Basic, viewed 2 August 2012,

www.abs.gov.au/websitedbs/censushome.nsf/home/tablebuilder?opendocument&navpos=240

Australian Bureau of Statistics, 2012c, *Regional Population Growth, Australia, 2011*, cat. no. 3218.0, viewed 11 August 2012, www.abs.gov.au/ausstats/abs@.nsf/mf/3218.0/

Australian Bureau of Statistics, ABS 2012d, *Basic Community Profile, Statistical Area Level 1, NSW*, 'Table B25. Family Composition', 2011 Census DataPack, viewed 2 August 2012,

www.abs.gov.au/websitedbs/censushome.nsf/home/datapacks?opendocument&navpos=250

Australian Bureau of Statistics, 2012e, *Basic Community Profile, Statistical Area Level 1, NSW*, 'Table B09. Country of Birth of Person by Sex', 2011 Census DataPack, viewed 2 August 2012,

www.abs.gov.au/websitedbs/censushome.nsf/home/datapacks?opendocument&navpos=250

Australian Bureau of Statistics, 2012f, *Basic Community Profile, Statistical Area Level 1, NSW*, 'Table B13. Language Spoken at Home by Sex', 2011 Census DataPack, viewed 2 August 2012,
www.abs.gov.au/websitedbs/censushome.nsf/home/datapacks?opendocument&navpos=250

Australian Bureau of Statistics, 2012g, *Basic Community Profile, Statistical Area Level 1, NSW*, 'Table B17. Total Personal Income (Weekly) by Age by Sex', 2011 Census DataPack, viewed 2 August 2012,
www.abs.gov.au/websitedbs/censushome.nsf/home/datapacks?opendocument&navpos=250

Australian Bureau of Statistics, 2012h, *Basic Community Profile, Statistical Area Level 1, NSW*, 'Table B28. Total Household Income (Weekly) by Household Composition', 2011 Census DataPack, viewed 2 August 2012,
www.abs.gov.au/websitedbs/censushome.nsf/home/datapacks?opendocument&navpos=250

Australian Bureau of Statistics, ABS 2012i, *Labour Force database 2006*, TableBuilder Basic, viewed 2 August 2012,
www.abs.gov.au/websitedbs/censushome.nsf/home/tablebuilder?opendocument&navpos=240

Australian Bureau of Statistics, 2012j, *Counts of Australian Businesses, including Entries and Exits, Jun 2007 to Jun 2011*, cat. no. 8165.0, viewed 8 September 2012,
www.abs.gov.au/ausstats/abs@.nsf/mf/8165.0

Australian Bureau of Statistics, 2012k, *Basic Community Profile, Statistical Area Level 1, NSW*, 'Table B15. Type of Educational Institution Attending (Full/Part-Time Student Status by Age) by Sex', 2011 Census DataPack, viewed 2 August 2012,
www.abs.gov.au/websitedbs/censushome.nsf/home/datapacks?opendocument&navpos=250

Australian Bureau of Statistics, 2012l, *Basic Community Profile, Statistical Area Level 1, NSW*, 'Table B31. Dwelling Structure', 2011 Census DataPack, viewed 2 August 2012,
www.abs.gov.au/websitedbs/censushome.nsf/home/datapacks?opendocument&navpos=250

Australian Bureau of Statistics, 2012m, *Basic Community Profile, Statistical Area Level 1, NSW*, 'Table B32. Tenure Type and Landlord Type by Dwelling Structure', 2011 Census DataPack, viewed 2 August 2012,
www.abs.gov.au/websitedbs/censushome.nsf/home/datapacks?opendocument&navpos=250

Australian Bureau of Statistics, 2012n), *Basic Community Profile, Statistical Area Level 1, NSW*, 'Table B35. Type of Internet Connection by Dwelling Structure', 2011 Census DataPack, viewed 2 August 2012,
www.abs.gov.au/websitedbs/censushome.nsf/home/datapacks?opendocument&navpos=250

Australian Bureau of Statistics, 2012o, *Basic Community Profile, Statistical Area Level 1, NSW*, 'Table B19. Voluntary Work for an Organisation or Group by Age by Sex', 2011 Census DataPack, viewed 2 August 2012, www.abs.gov.au/websitedbs/censushome.nsf/home/datapacks?opendocument&navpos=250

Australian Housing and Urban Research Institute (AHURI), 2011, *Gentrification and displacement: the household impacts of neighbourhood change*, viewed 6 March 2013, www.ahuri.edu.au/publications/p40548/

BankWest, 2008a, *Quality of Life Index 2008 - Quality of Life Report*, viewed 6 March 2013, www.bankwest.com.au/media-centre/financial-indicator-series/bankwest-quality-of-life-index-2008-1269940008245#

BankWest, 2008b, *Quality of Life Index 2008 - Quality of Life Report - NSW*, viewed 6 March 2013, www.bankwest.com.au/media-centre/financial-indicator-series/bankwest-quality-of-life-index-2008-1269940008245#

BankWest, 2008c, *Quality of Life Index 2008 – Complete Quality of life Rankings*, viewed 6 March 2013, www.bankwest.com.au/media-centre/financial-indicator-series/bankwest-quality-of-life-index-2008-1269940008245#

Department of Environment, Climate Change and Water (DECCW) 2009, *Native Vegetation of the Sydney Metropolitan Catchment Management Authority Area*, Hurstville, NSW, viewed 4 March 2013, www.sydney.cma.nsw.gov.au/our-projects/vegetation-mapping.html

Singh, I & Ahmed, M, 2006, *Sydney Metro Catchment Management Authority 2006 Socio-Economic Information*, Economics and Social Sciences Group, Science and Information, NSW Department of Natural Resources.