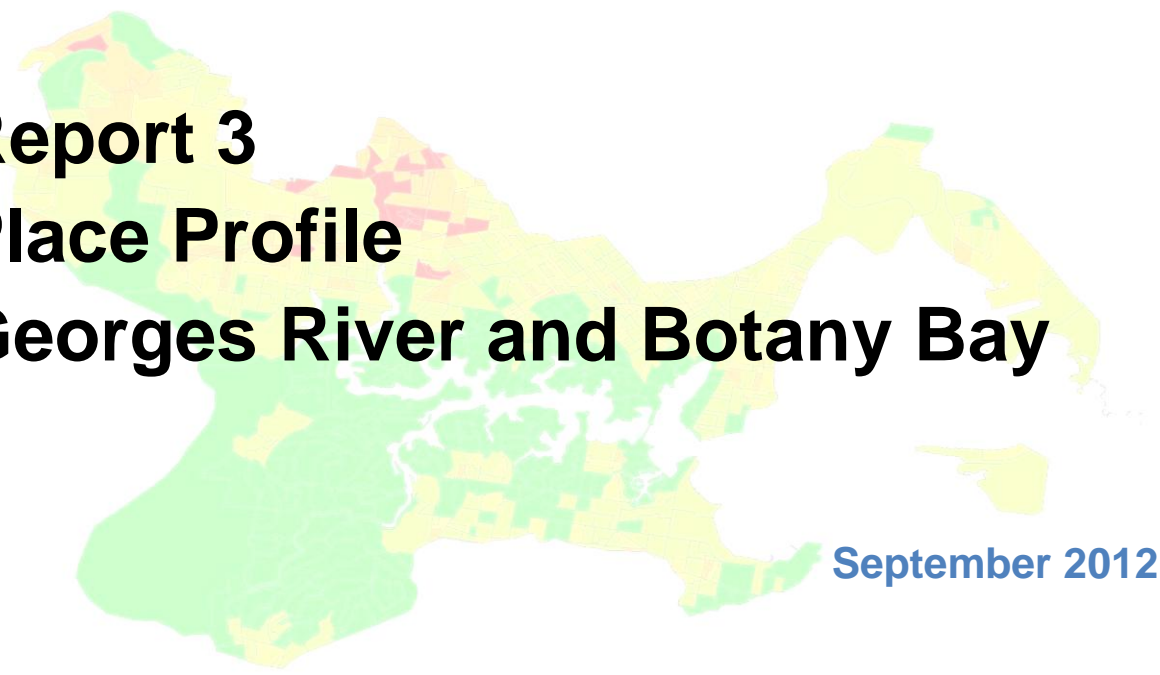


Community Profile Analysis Sydney Metropolitan CMA Region

Decile



Report 3 Place Profile Georges River and Botany Bay



Catchment Management
Authority
Sydney Metropolitan

Disclaimer: The Sydney Metropolitan Catchment Management Authority has prepared this document in good faith exercising all due care and attention, but no representation or warranty, express or implied, is made as to the relevance, accuracy, completeness or fitness for purpose of this document in respect of any particular user's circumstances. Users of this document should satisfy themselves concerning its application to, and where necessary seek expert advice in respect of, their situation.

Prepared For: Sydney Metropolitan Catchment Management Authority

This report has been prepared by Bruce Boyes Consulting www.bruceboyes.info to assist the Sydney Metropolitan Catchment Management Authority (CMA) develop an upgraded Catchment Action Plan (CAP) and to provide reference information for other Sydney Metropolitan CMA activities.

Project Managers: Jenna Hore and John Dahlenburg

Principal Author: Bruce Boyes

Citation: Sydney Metropolitan Catchment Management Authority (2012). *Community Profile Analysis Sydney Metropolitan CMA Region September 2012, Report 3 – Place Profile: Georges River and Botany Bay*

© Sydney Metropolitan Catchment Management Authority, 2012.

10 Valentine Ave (PO Box 3720)
Parramatta NSW 2124
Phone: (02) 9895 7898
Web: www.sydney.cma.nsw.gov.au

Report series: This report is one of a series of ten Community Profile Analysis reports prepared for the Sydney Metropolitan CMA region:

- Report 1 Regional Profile
- Report 2 Place Profile Cooks River Catchment
- **Report 3 Place Profile Georges River and Botany Bay**
- Report 4 Place Profile Northern Bushy Burbs and Beaches
- Report 5 Place Profile Parramatta River
- Report 6 Place Profile Port Hacking and Southern Wilderness
- Report 7 Place Profile South-west Peri-urban
- Report 8 Place Profile Sydney City, Harbour and Beaches
- Report 9 Place Profile Western Sydney Woodlands
- Report 10 Appendix of Tables.

This material may be reproduced for non-commercial purpose in whole or in part, provided the meaning is unchanged and the source is acknowledged.

September 2012

Contents

Summary	1
1 Introduction.....	3
1.1 Purpose of this report.....	3
1.2 Report structure	3
1.3 Analysis approach.....	3
1.4 Local Government area and regional statistics.....	5
2 Population profile	6
2.1 Total population	6
2.2 Population density.....	7
2.3 Gender balance	8
2.4 Age distribution	8
2.5 Family structure	9
2.6 Indigenous population.....	10
2.7 Ethnicity (country of birth)	10
2.8 Language spoken at home.....	12
3 Income, employment, business and education profile	15
3.1 Personal income	15
3.2 Household income	15
3.3 Index of advantage/disadvantage	16
3.4 Employment.....	17
3.5 Industry of employment.....	18
3.6 Occupation	21
3.7 Business numbers and turnover.....	21
3.8 Value of tourism to the regional economy	23
3.9 Primary production.....	23
3.10 Level of education.....	24

3.11	Attendance at educational institutions	24
4	Residential profile	25
4.1	Dwelling types.....	25
4.2	Home ownership.....	26
4.3	Home internet connection	26
4.4	Residential water and energy use	27
4.5	Liveability index	27
4.6	Gentrification.....	28
5	Environmental engagement profile.....	28
5.1	Level of volunteering.....	28
5.2	Environmental concern	29
6	References	29

List of figures

Figure 1	The eight 'Places' that have been defined within the Sydney Metropolitan CMA region based on social, economic and ecological criteria	4
Figure 2	Population age distribution for Georges River and Botany Bay in 2006 and 2011 (ABS 2012a, 2012b)	9
Figure 3	Index of Relative Socio-economic Advantage and Disadvantage deciles for Census Districts across Georges River and Botany Bay in 2006 (ABS 2008)	17
Figure 4	Proportions of employed people in each of 17 categories of industry of employment in Georges River and Botany Bay in 2006 compared to the overall Sydney Metropolitan CMA region (ABS 2012i).....	20
Figure 5	Locations and types of primary producers in Georges River and Botany Bay.....	23

List of tables

Table 1	Local Government areas within Georges River and Botany Bay	5
Table 2	Georges River and Botany Bay population in 2006 and 2011 and population growth 2006-2011 (ABS 2012a, 2012b).....	6
Table 3	Estimated resident population (ERP) growth from 2001 to 2011 of Local Government areas across Georges River and Botany Bay (ABS 2012c).....	6
Table 4	Population density in 2006 and 2011 and increase in population density between 2006 and 2011 for Georges River and Botany Bay (ABS 2012a, 2012b).	7
Table 5	Gender balance of Georges River and Botany Bay in 2011 (ABS 2012a)	8

Table 6 Family structure of Georges River and Botany Bay in 2011 (ABS 2012d)	9
Table 7 Indigenous population of Georges River and Botany Bay in 2011 (ABS 2012a)	10
Table 8 Country of birth listed in order of highest to lowest number of people (ABS 2012e) 11	
Table 9 Comparison of the ten countries from which the highest proportion of people born outside Australia in Georges River and Botany Bay originate with the overall Sydney Metropolitan CMA region (in order of highest to lowest proportion)	12
Table 10 Language spoken at home listed in order of highest to lowest number of people (ABS 2012f)	13
Table 11 Comparison of the ten languages other than English spoken at home by the highest proportion of people in Georges River and Botany Bay with the overall Sydney Metropolitan CMA region (in order of highest to lowest proportion)	14
Table 12 Numbers and proportions of people receiving various amounts of personal weekly income in Georges River and Botany Bay in 2011 (ABS 2012g)	15
Table 13 Numbers and proportions of households receiving various amounts of weekly income in Georges River and Botany Bay in 2011 (ABS 2012h).	16
Table 14 Numbers and proportions of employed people in Georges River and Botany Bay in 2006 (ABS 2012i).....	18
Table 15 Numbers and proportions of employed people in each of 17 categories of industry of employment in Georges River and Botany Bay in 2006 (ABS 2012i)	19
Table 16 Numbers and proportions of employed people in each of nine categories of occupation in Georges River and Botany Bay in 2006 (ABS 2012i).....	21
Table 17 Numbers of businesses in various turnover size ranges for 19 industry categories in Georges River and Botany Bay in 2011, listed in order of the industry categories with highest to lowest total business numbers (ABS 2012o).....	22
Table 18 Numbers and proportions of people with non-school qualifications in Georges River and Botany Bay in 2006 (ABS 2012b).....	24
Table 19 Numbers and proportions of people attending educational institutions in Georges River and Botany Bay in 2011 (proportions are of total attendance) (ABS 2012j).....	24
Table 20 Numbers and proportions of different dwelling types in Georges River and Botany Bay in 2011 (ABS 2012k).....	25
Table 21 Numbers of people living in each of the different dwelling types in Georges River and Botany Bay in 2011 (ABS 2012k)	25
Table 22 Numbers and proportions of dwellings owned and rented in Georges River and Botany Bay in 2011 (ABS 2012l)	26
Table 23 Numbers and proportions of types of home internet connection in dwellings in Georges River and Botany Bay in 2011 (ABS 2012m)	26

Table 24 Quality of Life survey rankings for Local Government areas across Georges River and Botany Bay (listed in order of ranking, where 1 is the highest quality of life and 590 the lowest) (BankWest 2008c) 27

Table 25 Numbers and proportions of volunteers in Georges River and Botany Bay in 2011 (ABS 2012n) 29

Summary

This Community Profile Analysis has been prepared to assist the Sydney Metropolitan Catchment Management Authority (CMA) develop an upgraded Catchment Action Plan and to provide reference information for other Sydney Metropolitan CMA activities.

The Sydney Metropolitan CMA has defined eight 'Places' within the CMA region based on social, economic and ecological criteria. These places are: Cooks River Catchment; Georges River and Botany Bay; Northern Bushy Burbs and Beaches; Parramatta River; Port Hacking and Southern Wilderness; South-west Peri-urban; Sydney City, Harbour and Beaches; and Western Sydney Woodlands.

The Community Profile Analysis comprises a series of ten reports covering both the overall Sydney Metropolitan CMA region (Report 1) and each of the eight Places (Reports 2 to 9). There is also an Appendix of Tables (Report 10). This specific report (Report 3) provides information about the Georges River and Botany Bay Place, and should be used in conjunction with *Report 1 Regional Profile*.

Key findings for Georges River and Botany Bay include:

- In 2006 the **population** of Georges River and Botany Bay was 296933, and in 2011 was 314361, a **population growth** of 5.87%. In 2011 Georges River and Botany Bay had the fourth highest population of the eight CMA Places, and from 2006-2011 had the third lowest population growth.
- In 2011 Georges River and Botany Bay had the third lowest **population density** of the eight CMA Places, and also the third lowest increase in population density between 2006 and 2011.
- There is a **gender imbalance** in Georges River and Botany Bay, with the female population higher than the male population in all eight CMA Places and the overall Sydney Metropolitan CMA region.
- In 2011 the **Indigenous population** of Georges River and Botany Bay was 3675, which is 0.87% of the total population.
- The five countries from which the largest proportion of **people born outside Australia** in Georges River and Botany Bay originate are (in order of highest to lowest proportion): China excluding Special Administrative Regions and Taiwan; United Kingdom, Channel Islands and Isle of Man; New Zealand; Lebanon; and Greece.
- The five **languages other than English spoken at home** by the highest proportion of people in Georges River and Botany Bay are (in order of highest to lowest proportion): Arabic; Greek; Chinese Languages - Cantonese; Chinese Languages - Mandarin; and Vietnamese.
- There are high proportions of 1-2 and 3-4 decile **relatively disadvantaged** Census Districts in the north-western parts of Georges River and Botany Bay.
- Georges River and Botany Bay has higher proportions of people **employed in the industries** of transport and storage; retail trade; construction; and manufacturing than the overall Sydney Metropolitan CMA region, and a lower proportion of people employed in the property and business services industry. There are very low proportions of people

working in the mining and agriculture, forestry and fishing industries in Georges River and Botany Bay.

- The five **industries with the highest total business numbers** in Georges River and Botany Bay are construction; rental, hiring and real estate services; professional, scientific and technical services; transport, postal and warehousing; and retail trade.
- In Georges River and Botany Bay, 73.17% of dwellings have a broadband **internet connection**, with only 2.53% of dwellings still having a dial up connection. However, 17.99% of dwellings have no internet connection, the third highest proportion of all eight CMA Places.
- The 2008 BankWest Quality of Life survey of 590 Local Government areas across Australia found that different areas of Sydney vary greatly in their **quality of life**.
- A study by the Australian Housing and Urban Research Institute (AHURI) found that the Marrickville and Randwick Local Government areas and the Concord part of the Canada Bay Local Government area experienced the most rapid **gentrification** in the Sydney region in the decade to 2006. Randwick is located within the Georges River and Botany Bay and Sydney City, Harbour and Beaches CMA Places. Because gentrification causes low income owners and renters to be diverted over time to other locations the impacts of the gentrification of these areas are likely to be being felt in other parts of Georges River and Botany Bay or in other CMA Places.

1 Introduction

1.1 Purpose of this report

This Community Profile Analysis report has been prepared to assist the Sydney Metropolitan Catchment Management Authority (CMA) develop an upgraded Catchment Action Plan and to provide reference information for other Sydney Metropolitan CMA activities.

The Sydney Metropolitan CMA is required to apply 'systems thinking' in upgrading its Catchment Action Plan (NRC 2012). Systems thinking has emerged as a new approach to natural resource management, and frames landscapes as dynamic systems with interacting social and ecological parts. To inform systems thinking, the CMA needs a better understanding of the current socio-economic status of its community and their attitudes towards the environment.

1.2 Report structure

To assist the implementation of systems thinking, the Sydney Metropolitan CMA has defined eight 'Places' within the CMA region based on social, economic and ecological criteria. These Places are shown in Figure 1.

The Community Profile Analysis comprises a series of reports covering both the overall Sydney Metropolitan CMA region (Report 1) and each of the eight Places (Reports 2 to 9). There is also an Appendix of Tables (Report 10).

This specific report (Report 3) provides information about the Georges River and Botany Bay Place, and should be used in conjunction with *Report 1 Regional Profile*.

1.3 Analysis approach

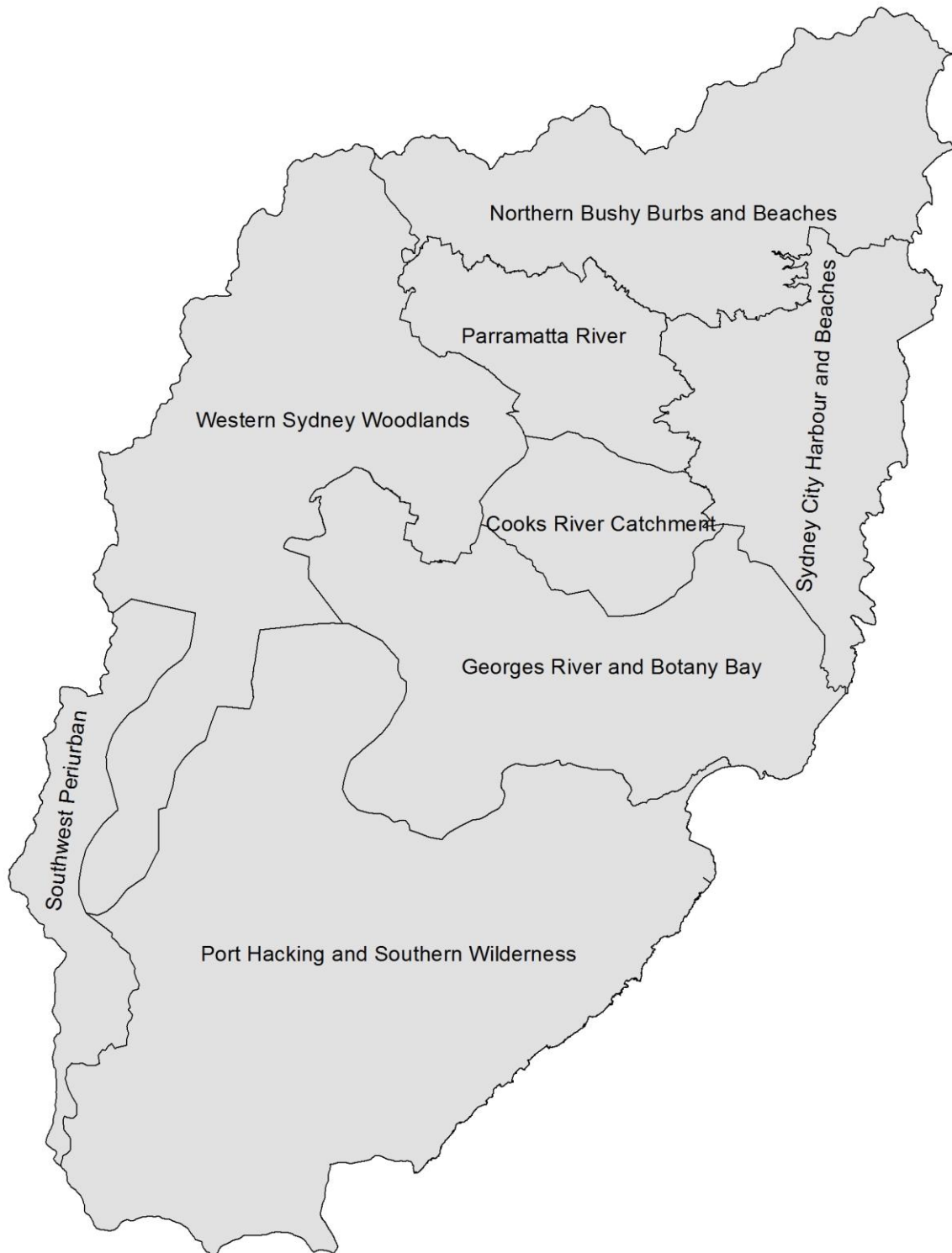
The Community Profile Analysis has been prepared using:

- Australian Bureau of Statistics (ABS) 2011 Census data at Statistical Area Level 1 (SA1) level
- Australian Bureau of Statistics (ABS) 2006 Census data at Collection District (CD) level
- other Australian Bureau of Statistics (ABS) data and publications
- statistics and references from sources other than the Australian Bureau of Statistics.

Until 2006 the Collection District (CD) was the smallest geographical area for which Australian Bureau of Statistics (ABS) Census data was available. From 2011 Collection Districts (CDs) were replaced with Statistical Areas Level 1 (SA1s) as part of the new Australian Statistical Geography Standard (ASGS) developed by the ABS for the collection and dissemination of geographic statistics (ABS 2011a). The SA1 has been designed as the smallest unit for the processing and release of Census data. SA1s are designed to remain relatively constant over several Censuses.

To assist analysis of Census data at Statistical Area Level 1 (SA1) and Collection District (CD) level, the Sydney Metropolitan CMA prepared and provided CD and SA1 Geographic Information System (GIS) maps of each of the eight Places.

Figure 1 The eight 'Places' that have been defined within the Sydney Metropolitan CMA region based on social, economic and ecological criteria



Two types of Australian Bureau of Statistics (ABS) population statistics are used in this Community Profile Analysis: place of usual residence and estimated resident population.

Place of usual residence (ABS 2011b) is used when conducting a Census data analysis such as this Community Profile Analysis. However, the estimated resident population (ERP) (ABS 2011c) is the official measure of the population of Australia. In the Census year, the ERP is first calculated at the Census date (9 August for the 2011 Census), and then backdated to calculate the ERP at 30 June of the Census year. In the compilation of the 30 June ERP for a Census year, important adjustments are made to the Census count based on place of usual residence.

All population statistics in this report are place of usual residence unless otherwise stated. It is important to note that the place of usual residence statistics in this report should not be quoted as an official population measure.

1.4 Local Government area and regional statistics

Some relevant statistics for Local Government areas and larger Sydney regions than the Sydney Metropolitan region have been used in this Community Profile Analysis. The larger Sydney regions include Greater Sydney and the Sydney tourism region.

Because the eight CMA Places have been defined on the basis of social, economic and ecological criteria they do not follow Local Government boundaries. Because of this, the use of Local Government area statistics needs to consider the proportions of each Local Government area within each Place. The Local Government areas within Georges River and Botany Bay are shown in Table 1. If the proportion of Local Government area was less than 1% it has not been included in the table, and any proportions between 99% and 100% have been stated as 'All of area'.

Table 1 Local Government areas within Georges River and Botany Bay

Local Government	Total Local Government area (km ²)	Local Government area within Place (km ²)	Proportion of Local Government area within Place
Kogarah	15.54789883	15.42728458	All of area
Hurstville	22.72414757	20.50293162	90.23%
Botany Bay	21.68675078	12.80984329	59.07%
Bankstown	76.80012751	39.69552271	51.69%
Rockdale	28.2192817	12.69984425	45.00%
Sutherland Shire	333.5789016	104.6831919	31.38%
Canterbury	33.56387591	6.324216957	18.84%
Randwick	36.33070085	3.879384137	10.68%
Liverpool	305.4311394	18.30346865	5.99%
Fairfield	101.5219295	2.916689937	2.87%
Marrickville	16.51963057	0.195639005	1.18%

2 Population profile

2.1 Total population

The total population of Georges River and Botany Bay in 2006 and 2011 is shown in Table 2 (ABS 2012a, 2012b). Table 2 also shows 2006-2011 population growth for Georges River and Botany Bay in comparison to the overall Sydney Metropolitan CMA region.

In 2011 Georges River and Botany Bay had the fourth highest population of the eight CMA Places, and from 2006-2011 had the third lowest population growth.

Table 2 Georges River and Botany Bay population in 2006 and 2011 and population growth 2006-2011 (ABS 2012a, 2012b)

Population 2006	296933
Population 2011	314361
Population growth 2006-2011	5.87%
Comparative population growth for Sydney Metropolitan CMA region	6.74%

The estimated resident population (ERP) growth from 2001 to 2011 of Local Government areas across Georges River and Botany Bay is shown in Table 3 (ABS 2012c). These population figures are for the whole of each Local Government area, including parts of some Local Government areas outside Georges River and Botany Bay, so their use needs to consider the information in Section 1.4 of this report.

Table 3 Estimated resident population (ERP) growth from 2001 to 2011 of Local Government areas across Georges River and Botany Bay (ABS 2012c)

Local Government	Estimated resident population (ERP) growth for whole of each Local Government area (pr = preliminary ABS estimates)					
	Population 2001	Population 2006	Population 2011 (pr)	2001-2011 population increase (pr)	2001-2011 population growth (pr)	Average annual population growth 2001-2011 (pr)
Kogarah	52463	54910	58938	6475	12.3%	1.2%
Hurstville	74088	76469	82569	8481	11.4%	1.1%
Botany Bay	37193	37680	41674	4481	12.0%	1.1%
Bankstown	171994	176857	190637	18643	10.8%	1.0%
Rockdale	92676	96334	102843	10167	11.0%	1.0%
Sutherland Shire	213828	212531	219751	5923	2.8%	0.3%
Canterbury	137492	135605	144751	7259	5.3%	0.5%
Randwick	125223	126108	137757	12534	10.0%	1.0%
Liverpool	159046	170915	188083	29037	18.3%	1.7%
Fairfield	189034	187263	196622	7588	4.0%	0.4%

Local Government	Estimated resident population (ERP) growth for whole of each Local Government area (pr = preliminary ABS estimates)					
	Population 2001	Population 2006	Population 2011 (pr)	2001-2011 population increase (pr)	2001-2011 population growth (pr)	Average annual population growth 2001-2011 (pr)
Marrickville	76743	75546	81489	4746	6.2%	0.6%
Totals	1329780	1350218	1445114	115334	8.7%	0.8%

The population in 2006 and 2011 and population growth for 2006-2011 for the overall Sydney Metropolitan CMA region can be found in the Regional Profile (Report 1 in this report series). The estimated resident population (ERP) growth from 2001-2011 of Local Government areas in each of the eight Sydney Metropolitan CMA Places can be found in the separate Place Reports (Reports 2 to 9 in this report series). A detailed table showing annual estimated resident population (ERP) for 2001-2011 for all Local Government areas across the Sydney Metropolitan CMA region can be found in the Appendix of Tables (Report 10 in this report series).

2.2 Population density

The population density in 2006 and 2011 and increase in population density between 2006 and 2011 for Georges River and Botany Bay are shown in Table 4 (ABS 2012a, 2012b).

In 2011 Georges River and Botany Bay had the third lowest population density of the eight CMA Places, and also the third lowest increase in population density between 2006 and 2011.

Table 4 Population density in 2006 and 2011 and increase in population density between 2006 and 2011 for Georges River and Botany Bay (ABS 2012a, 2012b).

Place Area (km ²)	301.6446
Population 2006	403265
Density 2006	1336.888
Population 2011	420329
Density 2011	1393.458
Density increase 2006-2011	4.23%
Comparative density increase 2006-2011for Sydney Metropolitan CMA region	6.74%

The population density in 2006 and 2011 and increase in population density between 2006 and 2011 for the overall Sydney Metropolitan CMA region can be found in the Regional Profile (Report 1 in this report series), and for each of the eight Sydney Metropolitan CMA Places can be found in the separate Place Reports (Reports 2 to 9 in this report series).

2.3 Gender balance

The gender balance of Georges River and Botany Bay in 2011 is shown in Table 5 (ABS 2012a).

The female population is higher than the male population in all eight Sydney Metropolitan CMA Places and the overall Sydney Metropolitan CMA region.

Table 5 Gender balance of Georges River and Botany Bay in 2011 (ABS 2012a)

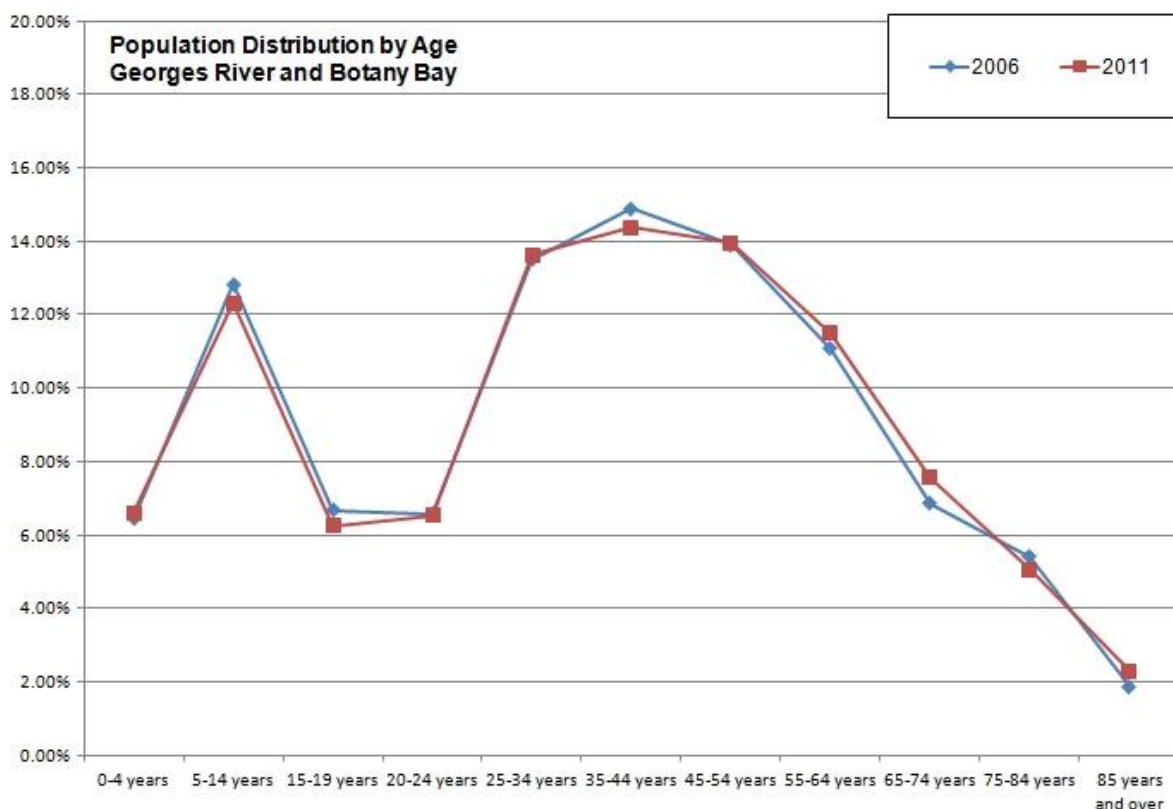
Males	205252
Females	215077
Proportion by which female population is higher than male population	4.79%
Comparative proportion by which female population is higher than male population in Sydney Metropolitan CMA region	2.81%

The gender balance in 2011 for the overall Sydney Metropolitan CMA region can be found in the Regional Profile (Report 1 in this report series), and for each of the eight Sydney Metropolitan CMA Places can be found in the separate Place Reports (Reports 2 to 9 in this report series).

2.4 Age distribution

The population age distribution for Georges River and Botany Bay in 2006 and 2011 is shown in Figure 2 (ABS 2012a, 2012b).

Figure 2 Population age distribution for Georges River and Botany Bay in 2006 and 2011 (ABS 2012a, 2012b)



The population age distribution for the overall Sydney Metropolitan CMA region in 2011 can be found in the Regional Profile (Report 1 in this report series), and for each of the eight Sydney Metropolitan CMA Places can be found in the separate Place Reports (Reports 2 to 9 in this report series). Detailed tables showing numbers and proportions of people for each of the age levels can be found in the Appendix of Tables (Report 10 in this report series).

2.5 Family structure

The family structure of Georges River and Botany Bay in 2011 is shown in Table 6 (ABS 2012d).

Table 6 Family structure of Georges River and Botany Bay in 2011 (ABS 2012d)

Couple families with no children	37506
Couple families with children	58209
One parent families	17348
Other families	1926
Total families	114989

The family structure for the overall Sydney Metropolitan CMA region in 2011 can be found in the Regional Profile (Report 1 in this report series), and for each of the eight Sydney Metropolitan CMA Places can be found in the separate Place Reports (Reports 2 to 9 in this

report series). A detailed family structure table can be found in the Appendix of Tables (Report 10 in this report series).

2.6 Indigenous population

The Indigenous population of Georges River and Botany Bay in 2011 is shown in (ABS 2012a)

Table 7 Indigenous population of Georges River and Botany Bay in 2011 (ABS 2012a)

Aboriginal population	3451
Torres Strait Islander population	162
Both Aboriginal and Torres Strait Islander population	62
Total Indigenous population	3675
Total Place population	420329
Indigenous proportion of total population	0.87%
Comparative Indigenous proportion of total population for Sydney Metropolitan CMA region	0.86%

The Indigenous population in 2011 for the overall Sydney Metropolitan CMA region can be found in the Regional Profile (Report 1 in this report series), and for each of the eight Sydney Metropolitan CMA Places can be found in the separate Place Reports (Reports 2 to 9 in this report series). A detailed table showing the gender balance of the Indigenous population can be found in the Appendix of Tables (Report 10 in this report series).

2.7 Ethnicity (country of birth)

The country of birth of people in Georges River and Botany Bay is shown in Table 8 (ABS 2012e). The ten countries from which the highest proportion of people born outside Australia in Georges River and Botany Bay originate are (in order of highest to lowest proportion):

1. China excluding Special Administrative Regions and Taiwan
2. United Kingdom, Channel Islands and Isle of Man
3. New Zealand
4. Lebanon
5. Greece
6. Vietnam
7. Hong Kong Special Administrative Region of China
8. India
9. Egypt
10. Former Yugoslav Republic of Macedonia

Georges River and Botany Bay has a lower proportion of people born outside Australia (35.96%) than the overall Sydney Metropolitan CMA region (44.74%).

Table 9 compares the ten countries from which the highest proportion of people born outside Australia in Georges River and Botany Bay originate with the overall Sydney Metropolitan CMA region.

Table 8 Country of birth listed in order of highest to lowest number of people (ABS 2012e)

Country of birth	People in Georges River and Botany Bay	Proportion of Place population
Australia	269183	64.04%
China excluding Special Administrative Regions and Taiwan	24857	5.91%
United Kingdom, Channel Islands and Isle of Man	12114	2.88%
New Zealand	6724	1.60%
Lebanon	6661	1.58%
Greece	6019	1.43%
Vietnam	5445	1.30%
Hong Kong Special Administrative Region of China	4979	1.18%
India	4045	0.96%
Egypt	3813	0.91%
Former Yugoslav Republic of Macedonia	3684	0.88%
Philippines	3654	0.87%
Italy	3444	0.82%
Indonesia	2953	0.70%
Fiji	2134	0.51%
Malaysia	2073	0.49%
South Africa	1821	0.43%
Croatia	1706	0.41%
Germany	1335	0.32%
Ireland	1134	0.27%
Malta	1081	0.26%
United States of America	1023	0.24%
Korea Republic of South	979	0.23%
Thailand	912	0.22%
Poland Persons	850	0.20%
Bosnia and Herzegovina	730	0.17%
Singapore	696	0.17%
Netherlands	640	0.15%
Sri Lanka	596	0.14%
Japan	585	0.14%
Iraq	544	0.13%
Turkey	542	0.13%
South Eastern Europe not further defined	517	0.12%
Canada	509	0.12%
Cambodia	338	0.08%
Born elsewhere	21637	5.15%
Country of birth not stated	20373	4.85%

Table 9 Comparison of the ten countries from which the highest proportion of people born outside Australia in Georges River and Botany Bay originate with the overall Sydney Metropolitan CMA region (in order of highest to lowest proportion)

Georges River and Botany Bay	Sydney Metropolitan CMA region
China excluding Special Administrative Regions and Taiwan	China excluding Special Administrative Regions and Taiwan
United Kingdom, Channel Islands and Isle of Man	United Kingdom, Channel Islands and Isle of Man
New Zealand	Vietnam
Lebanon	India
Greece	New Zealand
Vietnam	Lebanon
Hong Kong Special Administrative Region of China	Philippines
India	Korea Republic of South
Egypt	Italy
Former Yugoslav Republic of Macedonia	Hong Kong Special Administrative Region of China

The country of birth for people in the overall Sydney Metropolitan CMA region can be found in the Regional Profile (Report 1 in this report series), and for people in each of the other seven Sydney Metropolitan CMA Places it can be found in the other Place Reports (Reports 2 to 9 in this report series). A detailed table showing country of birth for the Sydney Metropolitan CMA region and all of the eight Places can be found in the Appendix of Tables (Report 10 in this report series).

2.8 Language spoken at home

The language spoken at home by people in Georges River and Botany Bay is shown in Table 10 (ABS 2012f). The ten languages other than English spoken at home by the highest proportion of people in Georges River and Botany Bay are (in order of highest to lowest proportion):

1. Arabic
2. Greek
3. Chinese Languages - Cantonese
4. Chinese Languages - Mandarin
5. Vietnamese
6. Macedonian
7. Italian
8. Spanish
9. Indo Aryan Languages - Other
10. Southeast Asian Austronesian Languages – Indonesian

Georges River and Botany Bay has a slightly lower proportion of people who speak languages other than English at home (39.90%) than the overall Sydney Metropolitan CMA region (44.55%).

Table 11 compares the ten languages other than English spoken at home by the highest proportion of people in Georges River and Botany Bay with the overall Sydney Metropolitan CMA region.

Table 10 Language spoken at home listed in order of highest to lowest number of people (ABS 2012f)

Language spoken at home	People in Georges River and Botany Bay	Proportion of Place population
English only	256774	61.10%
Arabic	20623	4.91%
Greek	20353	4.84%
Chinese Languages – Cantonese	20008	4.76%
Chinese Languages – Mandarin	19925	4.74%
Vietnamese	6940	1.65%
Macedonian	6829	1.62%
Italian	5851	1.39%
Spanish	4519	1.08%
Indo Aryan Languages – Other	3586	0.85%
Southeast Asian Austronesian Languages - Indonesian	2928	0.70%
Croatian	2664	0.63%
Indo Aryan Languages – Hindi	2545	0.61%
Southeast Asian Austronesian Languages - Tagalog	1938	0.46%
Chinese Languages – Other	1928	0.46%
Indo Aryan Languages – Bengali	1512	0.36%
Serbian	1381	0.33%
Portuguese	1362	0.32%
Russian	1273	0.30%
Korean	1084	0.26%
German	1035	0.25%
French	1021	0.24%
Southeast Asian Austronesian Languages - Filipino	1019	0.24%
Turkish	942	0.22%
Thai	933	0.22%
Polish	890	0.21%
Japanese	835	0.20%
Indo Aryan Languages – Urdu	808	0.19%
Samoan	741	0.18%
Maltese	734	0.17%
Indo Aryan Languages – Punjabi	732	0.17%
Tamil	458	0.11%
Hungarian	448	0.11%
Dutch	385	0.09%

Language spoken at home	People in Georges River and Botany Bay	Proportion of Place population
Iranic Languages - Persian excluding Dari	304	0.07%
Indo Aryan Languages – Sinhalese	279	0.07%
Khmer	238	0.06%
Assyrian	211	0.05%
Southeast Asian Austronesian Languages - Other	193	0.05%
Iranic Languages – Other	56	0.01%
Iranic Languages – Dari	27	0.01%
Australian Indigenous Languages	25	0.01%
Other languages	6489	1.54%
Language spoken at home not stated	17449	4.15%

Table 11 Comparison of the ten languages other than English spoken at home by the highest proportion of people in Georges River and Botany Bay with the overall Sydney Metropolitan CMA region (in order of highest to lowest proportion)

Georges River and Botany Bay	Sydney Metropolitan CMA region
Arabic	Arabic
Greek	Chinese Languages – Mandarin
Chinese Languages - Cantonese	Chinese Languages – Cantonese
Chinese Languages – Mandarin	Vietnamese
Vietnamese	Greek
Macedonian	Italian
Italian	Spanish
Spanish	Korean
Indo Aryan Languages – Other	Indo Aryan Languages – Hindi
Southeast Asian Austronesian Languages – Indonesian	Indo Aryan Languages – Other

The language spoken at home by people in the overall Sydney Metropolitan CMA region can be found in the Regional Profile (Report 1 in this report series), and for people in each of the other seven Sydney Metropolitan CMA Places it can be found in the other Place Reports (Reports 2 to 9 in this report series). A detailed table showing language spoken at home for the Sydney Metropolitan CMA region and all of the eight Places can be found in the Appendix of Tables (Report 10 in this report series).

3 Income, employment, business and education profile

3.1 Personal income

The numbers and proportions of people receiving various amounts of personal weekly income in Georges River and Botany Bay in 2011 are shown in Table 12 (ABS 2012g).

Table 12 Numbers and proportions of people receiving various amounts of personal weekly income in Georges River and Botany Bay in 2011 (ABS 2012g)

Negative or nil income	33185	9.74%
\$1-\$199	24497	7.19%
\$200-\$299	32322	9.48%
\$300-\$399	31687	9.30%
\$400-\$599	37281	10.94%
\$600-\$799	34466	10.11%
\$800-\$999	28982	8.50%
\$1000-\$1249	28033	8.22%
\$1250-\$1499	20052	5.88%
\$1500-\$1999	25029	7.34%
\$2000 or more	22139	6.50%
Personal income not stated	23167	6.80%

The numbers and proportions of people receiving various amounts of personal weekly income in the overall Sydney Metropolitan CMA region in 2011 can be found in the Regional Profile (Report 1 in this report series), and for the other seven Sydney Metropolitan CMA Places can be found in the other Place Reports (Reports 2 to 9 in this report series). Detailed tables showing gender breakdown for personal weekly income can be found in the Appendix of Tables (Report 10 in this report series).

3.2 Household income

The numbers and proportions of households receiving various amounts of weekly income in Georges River and Botany Bay in 2011 are shown in Table 13 (ABS 2012h).

Table 13 Numbers and proportions of households receiving various amounts of weekly income in Georges River and Botany Bay in 2011 (ABS 2012h).

Negative or nil income	2003	1.38%
\$1-\$199	2109	1.45%
\$200-\$299	3503	2.41%
\$300-\$399	7997	5.49%
\$400-\$599	11542	7.93%
\$600-\$799	10667	7.33%
\$800-\$999	10362	7.12%
\$1000-\$1249	10498	7.21%
\$1250-\$1499	9688	6.65%
\$1500-\$1999	16684	11.46%
\$2000-\$2499	13378	9.19%
\$2500-\$2999	12657	8.69%
\$3000-\$3499	8888	6.10%
\$3500-\$3999	4203	2.89%
\$4000 or more	6773	4.65%
Partial income stated	11078	7.61%
All incomes not stated	3587	2.46%

The numbers and proportions of households receiving various amounts of weekly income in the overall Sydney Metropolitan CMA region in 2011 can be found in the Regional Profile (Report 1 in this report series), and for the other seven Sydney Metropolitan CMA Places can be found in the other Place Reports (Reports 2 to 9 in this report series). Detailed tables showing the family household and non-family household breakdown for household weekly income can be found in the Appendix of Tables (Report 10 in this report series).

3.3 Index of advantage/disadvantage

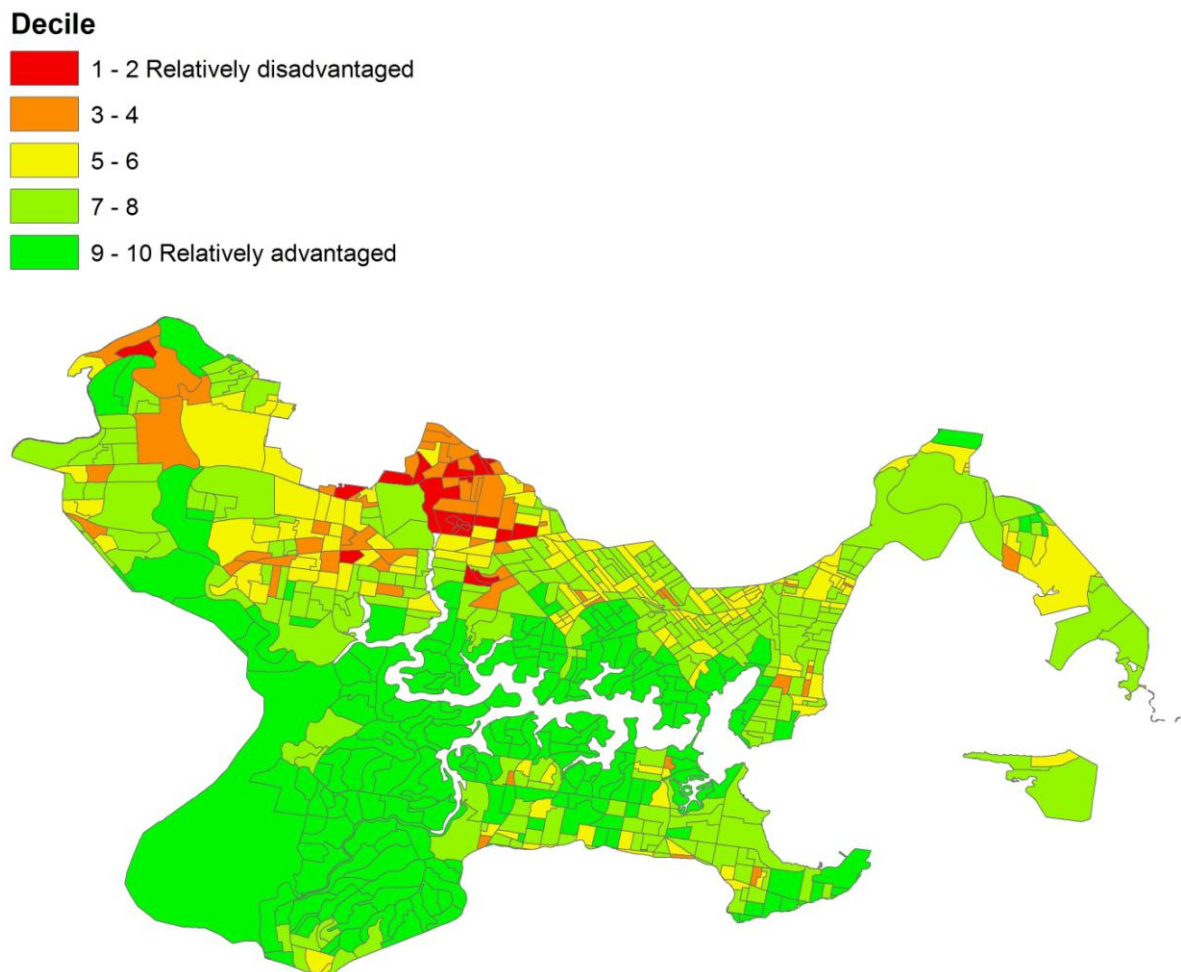
The Index of Relative Socio-economic Advantage and Disadvantage is a continuum of advantage (high score values) to disadvantage (low score values), and is derived from Australian Bureau of Statistics (ABS) Census variables related to both advantage and disadvantage (ABS 2008). It is one of four Socio-Economic Indexes for Areas (SEIFA). SEIFA uses a broad definition of relative socio-economic disadvantage in terms of people's access to material and social resources and their ability to participate in society. While SEIFA represents an average of all people living in an area, SEIFA does not represent the individual situation of each person.

The ABS applies deciles to SEIFA scores. All areas are ordered from lowest to highest score, and the lowest 10% of areas are given a decile number of 1 and so on, up to the highest 10% of areas which are given a decile number of 10. This means that areas are divided up into ten groups, depending on their score.

The Index of Relative Socio-economic Advantage and Disadvantage deciles for Census Districts across Georges River and Botany Bay in 2006 are shown in Figure 3 (ABS 2008). Not all Census Districts in the Sydney region have SEIFA scores because the ABS does not give scores to around 3% of Census Districts due to low populations or high levels of non-response in Census.

There are high proportions of 1-2 and 3-4 decile relatively disadvantaged Census Districts in the north-western parts of Georges River and Botany Bay.

Figure 3 Index of Relative Socio-economic Advantage and Disadvantage deciles for Census Districts across Georges River and Botany Bay in 2006 (ABS 2008)



An Index of Relative Socio-economic Advantage and Disadvantage decile map for the overall Sydney Metropolitan CMA region in 2006 can be found in the Regional Profile (Report 1 in this report series), and maps for the other seven Sydney Metropolitan CMA Places can be found in the other Place Reports (Reports 2 to 9 in this report series).

3.4 Employment

The numbers and proportions of employed people in Georges River and Botany Bay in 2006 are shown in Table 14 (ABS 2012i).

Total unemployment across all eight CMA Places ranged between 1.68% and 3.58%.

Table 14 Numbers and proportions of employed people in Georges River and Botany Bay in 2006 (ABS 2012i)

Employed, worked full-time	126211	31.30%
Employed, worked part-time	53316	13.22%
Employed, away from work	12234	3.03%
Total Employed	191761	47.56%
Unemployed, looking for full-time work	5323	1.32%
Unemployed, looking for part-time work	3613	0.90%
Total Unemployed	8936	2.22%
Not in the labour force	106219	26.34%
Not stated	18672	4.63%
Not applicable	77632	19.25%

The numbers and proportions of employed people in the overall Sydney Metropolitan CMA region in 2006 can be found in the Regional Profile (Report 1 in this report series), and for the other seven Sydney Metropolitan CMA Places can be found in the other Place Reports (Reports 2 to 9 in this report series).

3.5 Industry of employment

The numbers and proportions of people in each of 17 categories of industry of employment in Georges River and Botany Bay in 2006 are shown in Table 15 (ABS 2012i). The proportions of people in each of the 17 categories in Georges River and Botany Bay in 2006 compared to the overall Sydney Metropolitan CMA region are shown in Figure 4 (ABS 2012i).

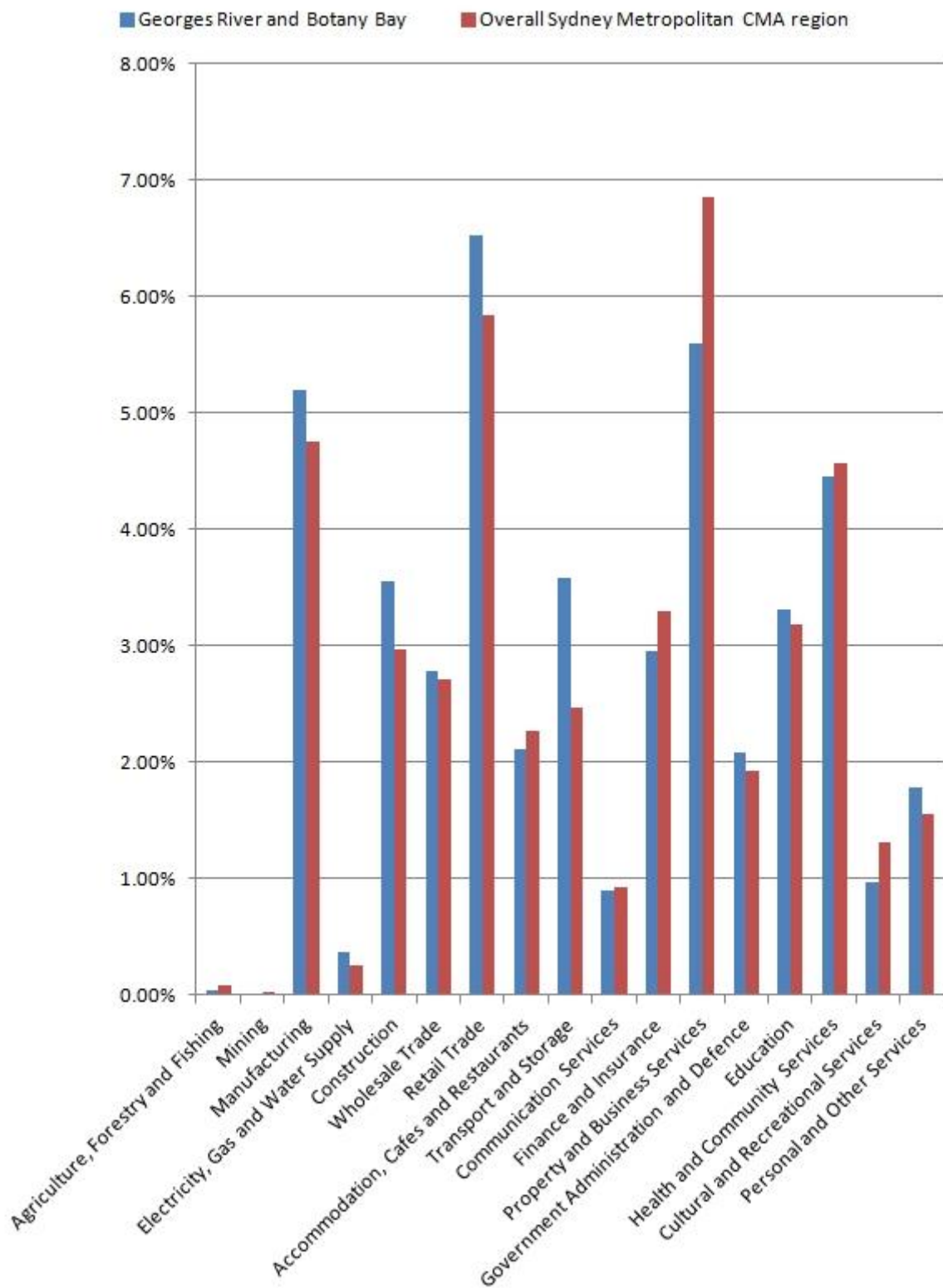
Georges River and Botany Bay has higher proportions of people employed in the transport and storage; retail trade; construction; and manufacturing industries than the overall Sydney Metropolitan CMA region, and a lower proportion of people employed in the property and business services industry.

There are very low proportions of people working in the mining and agriculture, forestry and fishing industries in Georges River and Botany Bay.

Table 15 Numbers and proportions of employed people in each of 17 categories of industry of employment in Georges River and Botany Bay in 2006 (ABS 2012i)

Agriculture, Forestry and Fishing	195	0.05%
Mining	65	0.02%
Manufacturing	20947	5.20%
Electricity, Gas and Water Supply	1472	0.37%
Construction	14353	3.56%
Wholesale Trade	11242	2.79%
Retail Trade	26311	6.53%
Accommodation, Cafes and Restaurants	8530	2.12%
Transport and Storage	14478	3.59%
Communication Services	3614	0.90%
Finance and Insurance	11903	2.95%
Property and Business Services	22603	5.61%
Government Administration and Defence	8411	2.09%
Education	13346	3.31%
Health and Community Services	17982	4.46%
Cultural and Recreational Services	3897	0.97%
Personal and Other Services	7187	1.78%
Non-Classifiable Economic Units	2182	0.54%
Not stated	2824	0.70%
Not applicable	211648	52.49%
Total	403190	

Figure 4 Proportions of employed people in each of 17 categories of industry of employment in Georges River and Botany Bay in 2006 compared to the overall Sydney Metropolitan CMA region (ABS 2012i)



The industries of employment for the overall Sydney Metropolitan CMA region can be found in the Regional Profile (Report 1 in this report series), and for the other seven Sydney Metropolitan CMA Places can be found in the other Place Reports (Reports 2 to 9 in this report series). Detailed tables can be found in the Appendix of Tables (Report 10 in this report series).

3.6 Occupation

The numbers and proportions of employed people in each of nine categories of occupation in Georges River and Botany Bay in 2006 are shown in Table 16 (ABS 2012i).

Table 16 Numbers and proportions of employed people in each of nine categories of occupation in Georges River and Botany Bay in 2006 (ABS 2012i)

Managers and Administrators	16054	3.98%
Professionals	37382	9.27%
Associate Professionals	22882	5.67%
Tradespersons and Related Workers	22590	5.60%
Advanced Clerical and Service Workers	8597	2.13%
Intermediate Clerical, Sales and Service Workers	36756	9.11%
Intermediate Production and Transport Workers	13831	3.43%
Elementary Clerical, Sales and Service Workers	18164	4.50%
Labourers and Related Workers	11380	2.82%
Not stated	1766	0.44%
Inadequately described	2218	0.55%
Not applicable	211637	52.48%
Total	403257	

The occupations of employed people in the overall Sydney Metropolitan CMA region can be found in the Regional Profile (Report 1 in this report series), and for the other seven Sydney Metropolitan CMA Places can be found in the other Place Reports (Reports 2 to 9 in this report series). A detailed table can be found in the Appendix of Tables (Report 10 in this report series).

3.7 Business numbers and turnover

The numbers of businesses in various turnover size ranges for 19 industry categories in Georges River and Botany Bay in 2011 are shown in Table 17 (ABS 2012o).

The smallest scale at which Australian Bureau of Statistics (ABS) counts of Australian businesses are available is Statistical Area 2 (SA2), and this data has been used to prepare Table 17. Due to the nature of the data sources for these counts (primarily the Australian Business Register) multi-location businesses can only be attributed by the ABS to a single SA2. Because of this, business counts at the SA2 level do not necessarily reflect all business operations within that SA2, and this needs to be considered when using the information in Table 17.

Additionally, because SA2s are larger than the Statistical Area 1s (SA1s) and Census Districts (CDs) used in compiling most of the other information in this report series, the SA2s overlap the boundaries of the Sydney Metropolitan CMA region and the boundaries of each of the eight CMA Places to a greater extent. Because of this a very small proportion of the counts in Table 17 relates to areas outside Georges River and Botany Bay, and this needs to be considered when using the information.

Table 17 Numbers of businesses in various turnover size ranges for 19 industry categories in Georges River and Botany Bay in 2011, listed in order of the industry categories with highest to lowest total business numbers (ABS 2012o)

Industry	Numbers of businesses in turnover size ranges						Total
	Zero to \$50k	\$50k to less than \$100k	\$100k to less than \$200k	\$200k to less than \$500k	\$500k to less than \$2m	\$2m or more	
Construction	1638	1948	1587	1462	848	351	7834
Rental, Hiring and Real Estate Services	1985	1261	979	742	414	108	5489
Professional, Scientific and Technical Services	1761	831	1040	808	402	83	4925
Transport, Postal and Warehousing	1376	1064	640	365	213	160	3818
Retail Trade	655	333	416	577	628	279	2888
Financial and Insurance Services	1358	472	386	315	165	36	2732
Manufacturing	459	269	299	388	478	355	2248
Wholesale Trade	494	275	263	375	415	389	2211
Health Care and Social Assistance	351	301	375	571	433	59	2090
Other Services	484	405	468	384	246	53	2040
Administrative and Support Services	691	350	280	259	185	83	1848
Accommodation and Food Services	201	226	300	463	277	100	1567
Education and Training	198	82	108	81	58	12	539
Arts and Recreation Services	204	107	87	72	42	9	521
Agriculture, Forestry and Fishing	274	42	21	12	15	6	370
Information Media and Telecommunications	132	51	47	33	24	9	296
Public Administration and Safety	69	27	27	48	12	15	198
Electricity, Gas, Water and Waste Services	18	27	36	37	12	9	139
Mining	7	0	0	9	3	3	22
Total	12355	8071	7359	7001	4870	2119	41775

The numbers of businesses in various turnover size ranges in the overall Sydney Metropolitan CMA region can be found in the Regional Profile (Report 1 in this report series), and for the other seven Sydney Metropolitan CMA Places can be found in the other Place Reports (Reports 2 to 9 in this report series).

3.8 Value of tourism to the regional economy

Information on the numbers of tourism businesses and the expenditure by domestic and international tourists in the Sydney tourism region can be found in the Regional Profile (Report 1 in this report series). The Sydney tourism region, a larger region than the Sydney Metropolitan CMA region, is the smallest scale at which these statistics are available.

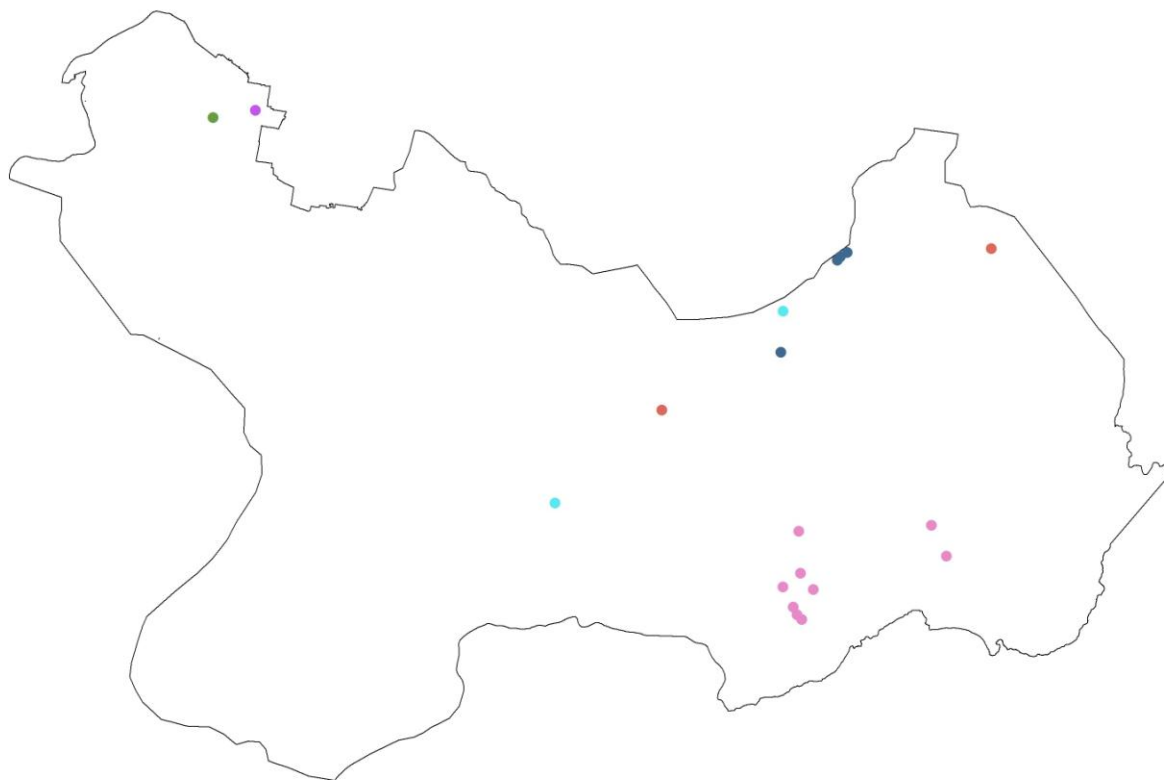
3.9 Primary production

The locations and types of primary producers in Georges River and Botany Bay are shown in Figure 5.

Figure 5 Locations and types of primary producers in Georges River and Botany Bay

Primary Producer Type

- Aquaculture
- Honey Bee Keeper
- Livestock Farm, 10 - 50 stock
- Mushroom Grower
- Nursery
- Vegetable Grower



The locations and types of primary producers in the overall Sydney Metropolitan CMA region can be found in the Regional Profile (Report 1 in this report series), and for the other seven Sydney Metropolitan CMA Places can be found in the other Place Reports (Reports 2 to 9 in this report series).

3.10 Level of education

The numbers and proportions of people with non-school qualifications in Georges River and Botany Bay in 2006 are shown in Table 18 (ABS 2012b).

Table 18 Numbers and proportions of people with non-school qualifications in Georges River and Botany Bay in 2006 (ABS 2012b)

Postgraduate Degree Level	9834	2.44%
Graduate Diploma and Graduate Certificate Level	3641	0.90%
Bachelor Degree Level	39550	9.81%
Advanced Diploma and Diploma Level	27779	6.89%
Certificate Level	57481	14.26%
Level of education not stated	35523	8.81%
Level of education inadequately described	5523	1.37%
Not applicable	223902	55.53%

The numbers and proportions of people with non-school qualifications in the overall Sydney Metropolitan CMA region in 2006 can be found in the Regional Profile (Report 1 in this report series), and for the other seven Sydney Metropolitan CMA Places can be found in the other Place Reports (Reports 2 to 9 in this report series).

3.11 Attendance at educational institutions

The numbers and proportions of people attending educational institutions in Georges River and Botany Bay in 2011 are shown in Table 19 (ABS 2012j).

Table 19 Numbers and proportions of people attending educational institutions in Georges River and Botany Bay in 2011 (proportions are of total attendance) (ABS 2012j)

Pre school	7580	6.04%
Infants and Primary school	33041	26.31%
Secondary school	27348	21.78%
Technical or Further Educational institution	9781	7.79%
University or other Tertiary Institution	19867	15.82%
Other type of educational institution	2901	2.31%
Type of educational institution not stated	25068	19.96%
Total attendance	125586	

The numbers and proportions of people attending educational institutions in the overall Sydney Metropolitan CMA region in 2011 can be found in the Regional Profile (Report 1 in this report series), and for the other seven Sydney Metropolitan CMA Places can be found in the other Place Reports (Reports 2 to 9 in this report series). A detailed table showing a breakdown of the different types of Infant and Primary schools and Secondary schools attended can be found in the Appendix of Tables (Report 10 in this report series).

4 Residential profile

4.1 Dwelling types

The numbers and proportions of different dwelling types in Georges River and Botany Bay in 2011 are shown in Table 20 (ABS 2012k). The numbers of people living in each of those dwelling types in 2011 is shown in Table 21 (ABS 2012k)

Table 20 Numbers and proportions of different dwelling types in Georges River and Botany Bay in 2011 (ABS 2012k)

Separate houses	93660	60.86%
Semi detached, row or terrace houses, townhouses	18884	12.27%
Flats, units, or apartments	32358	21.03%
Other dwellings	595	0.39%
Dwelling structure not stated	110	0.07%
Total occupied dwellings	145607	94.61%
Unoccupied private dwellings	8288	5.39%
Total private dwellings	153895	

Table 21 Numbers of people living in each of the different dwelling types in Georges River and Botany Bay in 2011 (ABS 2012k)

People in separate houses	283627
People in semi detached, row or terrace houses, townhouses	46010
People in flats, units, or apartments	67932
People in other dwellings	1316
People in dwelling structure not stated	282
Total people in private dwellings	399167

The numbers of different dwelling types and numbers of people living in each of those different dwelling types in the overall Sydney Metropolitan CMA region in 2011 can be found in the Regional Profile (Report 1 in this report series), and for the other seven Sydney Metropolitan CMA Places can be found in the other Place Reports (Reports 2 to 9 in this report series).

4.2 Home ownership

The numbers and proportions of dwellings owned and rented in Georges River and Botany Bay in 2011 are shown in Table 22 (ABS 2012I).

Table 22 Numbers and proportions of dwellings owned and rented in Georges River and Botany Bay in 2011 (ABS 2012I)

Owned outright	52888	36.34%
Owned with a mortgage	52646	36.17%
Rented	35629	24.48%
Other tenure type	929	0.64%
Tenure type not stated	3459	2.38%

The numbers and proportions of dwellings owned and rented in the overall Sydney Metropolitan CMA region in 2011 can be found in the Regional Profile (Report 1 in this report series), and for the other seven Sydney Metropolitan CMA Places can be found in the other Place Reports (Reports 2 to 9 in this report series). A detailed table showing a breakdown of rental types can be found in the Appendix of Tables (Report 10 in this report series).

4.3 Home internet connection

The numbers and proportions of types of home internet connection in dwellings in Georges River and Botany Bay in 2011 are shown in Table 23 (ABS 2012m).

In Georges River and Botany Bay, 73.17% of dwellings have a broadband internet connection, with only 2.53% of dwellings still having a dial up connection. However, 17.99% of dwellings have no internet connection, the third highest proportion of all eight CMA Places.

Table 23 Numbers and proportions of types of home internet connection in dwellings in Georges River and Botany Bay in 2011 (ABS 2012m)

Broadband	106459	73.17%
Dial up	3684	2.53%
Other type of internet connection	3910	2.69%
Total dwellings with internet connection	114053	78.39%
No internet connection	26166	17.99%
Internet connection not stated	5267	3.62%

The numbers and proportions of types of home internet connection in dwellings in the overall Sydney Metropolitan CMA region in 2011 can be found in the Regional Profile (Report 1 in this report series), and for the other seven Sydney Metropolitan CMA Places can be found in the other Place Reports (Reports 2 to 9 in this report series).

4.4 Residential water and energy use

In 2006 the Independent Pricing and Regulatory Tribunal of New South Wales (IPART) conducted a survey of residential household water, electricity and gas consumers in the greater Sydney region. Whilst not including information for individual areas in Sydney, the survey report *Residential energy and water use in Sydney, the Blue Mountains and Illawarra - Results from the 2006 household survey* (IPART 2007) provides valuable information about the characteristics of residential households and their energy and water consumption. Information on the survey results can be found in the Regional Profile (Report 1 in this report series).

Additionally, Ausgrid has published the electricity use of each Local Government area across greater Sydney including the amount of solar generation that is exported to the electricity grid (Ausgrid 2011). A table showing this information can be found in the Appendix of Tables (Report 10 in this report series). The Ausgrid electricity network services Sydney, the Hunter and the Central Coast.

4.5 Liveability index

The 2008 BankWest Quality of Life survey (BankWest 2008a, 2008b, 2008c) scored the performance of 590 Local Government areas across Australia including 152 in NSW, using ten variables which contribute to the quality of life including health, home ownership, house size, internet access, employment rates, earnings, education, community volunteering and crime rates.

The survey rankings for Local Government areas across Georges River and Botany Bay are shown in Table 24 (BankWest 2008c). The rankings are for the whole of each Local Government area, including parts of some Local Government areas outside Georges River and Botany Bay, so their use needs to consider the information in Section 1.4 of this report.

Table 24 Quality of Life survey rankings for Local Government areas across Georges River and Botany Bay (listed in order of ranking, where 1 is the highest quality of life and 590 the lowest) (BankWest 2008c)

Local Government	Quality of Life survey ranking
Sutherland Shire	55
Kogarah	157
Hurstville	286
Randwick	364
Rockdale	451
Bankstown	473
Liverpool	478
Marrickville	538
Botany Bay	542
Canterbury	546
Fairfield	548

Information on Quality of Life survey rankings for the overall Sydney Metropolitan CMA region in 2011 can be found in the Regional Profile (Report 1 in this report series), and for the Local Government areas across the other seven Sydney Metropolitan CMA Places can be found in the other Place Reports (Reports 2 to 9 in this report series).

Crime rates were one of the ten variables addressed in the Quality of Life survey. A breakdown of numbers of different types of crime in each of the Local Government areas across the Sydney Metropolitan CMA region can be found in the Appendix of Tables (Report 10 in this report series).

4.6 Gentrification

The Australian Housing and Urban Research Institute (AHURI) study *Gentrification and displacement: the household impacts of neighbourhood change* (AHURI 2011) finds that the Marrickville and Randwick Local Government areas and the Concord part of the Canada Bay Local Government area experienced the most rapid gentrification in the Sydney region in the decade to 2006.

Gentrification refers to the migration of higher income households to lower income neighbourhoods. It has three key effects (AHURI 2011):

1. Greater pressure on low income renters who either pay higher rents or are dislocated by the market to lower cost areas, either into private renting, presenting to social housing providers or becoming homeless.
2. Low income owners and renters are diverted over time to other locations with the subsequent loss of social diversity and reducing accessibility to employment (for parents) and education (for children) opportunities.
3. Changing communities and service infrastructures which often no longer cater for lower income residents.

Randwick is located within the Georges River and Botany Bay and Sydney City, Harbour and Beaches CMA Places. Because gentrification causes low income owners and renters to be diverted over time to other locations the impacts of the gentrification of these areas are likely to be being felt in other parts of Georges River and Botany Bay or in other CMA Places.

The study *Gentrification and displacement: the household impacts of neighbourhood change* (AHURI 2011) includes recommended policy responses to gentrification.

5 Environmental engagement profile

5.1 Level of volunteering

The numbers and proportions of volunteers in Georges River and Botany Bay in 2011 are shown in Table 25 (ABS 2012n). The information relates to voluntary work for an organisation or group, including groups and organisations related to the environment and groups and organisations not related to the environment. The Australian Bureau of Statistics only collects volunteering information for people aged 15 years and over so the total in Table 25 are smaller than overall populations for the region and Places.

Table 25 Numbers and proportions of volunteers in Georges River and Botany Bay in 2011 (ABS 2012n)

Volunteer	46915	13.76%
Not a volunteer	269410	79.03%
Voluntary work not stated	24567	7.21%
Total	340892	

The numbers and proportions of volunteers in the overall Sydney Metropolitan CMA region in 2011 can be found in the Regional Profile (Report 1 in this report series), and for the Local Government areas across the other seven Sydney Metropolitan CMA Places can be found in the other Place Reports (Reports 2 to 9 in this report series). Detailed tables showing breakdowns of volunteers according to gender and age can be found in the Appendix of Tables (Report 10 in this report series).

5.2 Environmental concern

The NSW Office of Environment and Heritage *Who Cares about the Environment* survey is conducted every three years and explores NSW people's environmental knowledge, attitudes and behaviours. The responses to some of the survey questions provide useful insights into environmental concern and activity in the Sydney Metropolitan CMA region. Information on these questions and the responses for the Sydney Inner and Sydney Outer survey regions can be found in the Regional Profile (Report 1 in this report series).

6 References

Ausgrid, 2011, *Average Household Consumption*, viewed 2 August 2012, http://www.ausgrid.com.au/Common/About-us/Sharing-information/Data-to-share/~/_media/Files/About%20Us/Sharing%20Information/Avg%20household%20consumption%202011.pdf

Australian Bureau of Statistics, 2008, *Census of Population and Housing: Socio-Economic Indexes for Areas (SEIFA), Australia - Data only, 2006*, cat. no. 2033.0.55.001, viewed 12 August 2012, <http://www.abs.gov.au/AUSSTATS/abs@.nsf/Lookup/2033.0.55.001Main+Features12006?OpenDocument>

Australian Bureau of Statistics, 2011a, *2011 Census Dictionary, Glossary*, 'Australian Statistical Geography Standard (ASGS)', viewed 11 August 2012, <http://www.abs.gov.au/ausstats/abs@.nsf/Lookup/2901.0Chapter23102011>

Australian Bureau of Statistics, 2011b, *2011 Census Dictionary, Glossary*, 'Place of Usual Residence (PURP)', viewed 11 August 2012, <http://www.abs.gov.au/ausstats/abs@.nsf/Lookup/2901.0Chapter47302011>

Australian Bureau of Statistics, 2011c, *2011 Census Dictionary, Glossary*, 'Estimated Resident Population (ERP)', viewed 11 August 2012, <http://www.abs.gov.au/ausstats/abs@.nsf/Lookup/2901.0Chapter31702011>

Australian Bureau of Statistics, 2012a, *Basic Community Profile, Statistical Area Level 1, NSW*, 'Table B01. Selected Person Characteristics by Sex, 2011 Census DataPack', viewed

2 August 2012,

<http://www.abs.gov.au/websitedbs/censushome.nsf/home/datapacks?opendocument&navpos=250>

Australian Bureau of Statistics, 2012b, *Relationship database 2006*, TableBuilder Basic, viewed 2 August 2012,

<http://www.abs.gov.au/websitedbs/censushome.nsf/home/tablebuilder?opendocument&navpos=240>

Australian Bureau of Statistics, 2012c, *Regional Population Growth, Australia, 2011*, cat. no. 3218.0, viewed 11 August 2012, <http://www.abs.gov.au/ausstats/abs@.nsf/mf/3218.0/>

Australian Bureau of Statistics, ABS 2012d, *Basic Community Profile, Statistical Area Level 1, NSW*, 'Table B25. Family Composition', 2011 Census DataPack, viewed 2 August 2012, <http://www.abs.gov.au/websitedbs/censushome.nsf/home/datapacks?opendocument&navpos=250>

Australian Bureau of Statistics, 2012e, *Basic Community Profile, Statistical Area Level 1, NSW*, 'Table B09. Country of Birth of Person by Sex', 2011 Census DataPack, viewed 2 August 2012,

<http://www.abs.gov.au/websitedbs/censushome.nsf/home/datapacks?opendocument&navpos=250>

Australian Bureau of Statistics, 2012f, *Basic Community Profile, Statistical Area Level 1, NSW*, 'Table B13. Language Spoken at Home by Sex', 2011 Census DataPack, viewed 2 August 2012,

<http://www.abs.gov.au/websitedbs/censushome.nsf/home/datapacks?opendocument&navpos=250>

Australian Bureau of Statistics, 2012g, *Basic Community Profile, Statistical Area Level 1, NSW*, 'Table B17. Total Personal Income (Weekly) by Age by Sex', 2011 Census DataPack, viewed 2 August 2012,

<http://www.abs.gov.au/websitedbs/censushome.nsf/home/datapacks?opendocument&navpos=250>

Australian Bureau of Statistics, 2012h, *Basic Community Profile, Statistical Area Level 1, NSW*, 'Table B28. Total Household Income (Weekly) by Household Composition', 2011 Census DataPack, viewed 2 August 2012,

<http://www.abs.gov.au/websitedbs/censushome.nsf/home/datapacks?opendocument&navpos=250>

Australian Bureau of Statistics, ABS 2012i, *Labour Force database 2006*, TableBuilder Basic, viewed 2 August 2012,

<http://www.abs.gov.au/websitedbs/censushome.nsf/home/tablebuilder?opendocument&navpos=240>

Australian Bureau of Statistics, 2012j, *Basic Community Profile, Statistical Area Level 1, NSW*, 'Table B15. Type of Educational Institution Attending (Full/Part-Time Student Status by Age) by Sex', 2011 Census DataPack, viewed 2 August 2012,

<http://www.abs.gov.au/websitedbs/censushome.nsf/home/datapacks?opendocument&navpos=250>

Australian Bureau of Statistics, 2012k, *Basic Community Profile, Statistical Area Level 1, NSW*, 'Table B31. Dwelling Structure', 2011 Census DataPack, viewed 2 August 2012,

<http://www.abs.gov.au/websitedbs/censushome.nsf/home/datapacks?opendocument&navpos=250>

Australian Bureau of Statistics, 2012l, *Basic Community Profile, Statistical Area Level 1, NSW*, 'Table B32. Tenure Type and Landlord Type by Dwelling Structure', 2011 Census DataPack, viewed 2 August 2012,

<http://www.abs.gov.au/websitedbs/censushome.nsf/home/datapacks?opendocument&navpos=250>

Australian Bureau of Statistics, 2012m), *Basic Community Profile, Statistical Area Level 1, NSW*, 'Table B35. Type of Internet Connection by Dwelling Structure', 2011 Census DataPack, viewed 2 August 2012,

<http://www.abs.gov.au/websitedbs/censushome.nsf/home/datapacks?opendocument&navpos=250>

Australian Bureau of Statistics, 2012n, *Basic Community Profile, Statistical Area Level 1, NSW*, 'Table B19. Voluntary Work for an Organisation or Group by Age by Sex', 2011 Census DataPack, viewed 2 August 2012,

<http://www.abs.gov.au/websitedbs/censushome.nsf/home/datapacks?opendocument&navpos=250>

Australian Bureau of Statistics, 2012o, *Counts of Australian Businesses, including Entries and Exits, Jun 2007 to Jun 2011*, cat. no. 8165.0, viewed 8 September 2012,

<http://www.abs.gov.au/ausstats/abs@.nsf/mf/8165.0>

Australian Housing and Urban Research Institute (AHURI), 2011, *Gentrification and displacement: the household impacts of neighbourhood change*, viewed 11 August 2012,

<http://www.ahuri.edu.au/publications/p40548/>

BankWest, 2008a, *Quality of Life Index 2008 - Quality of Life Report*, viewed 2 August 2012, <http://www.bankwest.com.au/media-centre/financial-indicator-series/bankwest-quality-of-life-index-2008-1269940008245#>

BankWest, 2008b, *Quality of Life Index 2008 - Quality of Life Report - NSW*, viewed 2 August 2012, <http://www.bankwest.com.au/media-centre/financial-indicator-series/bankwest-quality-of-life-index-2008-1269940008245#>

BankWest, 2008c, *Quality of Life Index 2008 – Complete Quality of life Rankings*, viewed 2 August 2012, <http://www.bankwest.com.au/media-centre/financial-indicator-series/bankwest-quality-of-life-index-2008-1269940008245#>

Independent Pricing and Regulatory Tribunal, 2007, *Residential energy and water use in Sydney, the Blue Mountains and Illawarra - Results from the 2006 household survey*, Electricity, Gas and Water - Research Paper 29, November 2007, viewed 2 August 2012, http://www.ipart.nsw.gov.au/files/33022cc2-4a20-41d2-a3f6-9f5d00ae4f0f/IPART_Household_Survey_2006_-_Residential_energy_and_water_use_in_Sydney_the_Blue_Mountains_and_Illawarra_-_3_December_2007_-_APD_-_WEB.pdf

Natural Resources Commission, 2012, *Framework for assessing and recommending upgraded catchment action plans, Version 2, June 2012*, NSW Natural Resources Commission Document No. D11/0769, viewed 2 August 2012,

<http://www.nrc.nsw.gov.au/content/documents/Framework%20for%20CAPs2.pdf>