

Community Profile Analysis Sydney Metropolitan CMA Region

Decile



Report 2 Place Profile Cooks River Catchment

September 2012



Catchment Management
Authority
Sydney Metropolitan

Disclaimer: The Sydney Metropolitan Catchment Management Authority has prepared this document in good faith exercising all due care and attention, but no representation or warranty, express or implied, is made as to the relevance, accuracy, completeness or fitness for purpose of this document in respect of any particular user's circumstances. Users of this document should satisfy themselves concerning its application to, and where necessary seek expert advice in respect of, their situation.

Prepared For: Sydney Metropolitan Catchment Management Authority

This report has been prepared by Bruce Boyes Consulting www.bruceboyes.info to assist the Sydney Metropolitan Catchment Management Authority (CMA) develop an upgraded Catchment Action Plan (CAP) and to provide reference information for other Sydney Metropolitan CMA activities.

Project Managers: Jenna Hore and John Dahlenburg

Principal Author: Bruce Boyes

Citation: Sydney Metropolitan Catchment Management Authority (2012). *Community Profile Analysis Sydney Metropolitan CMA Region September 2012, Report 2 – Place Profile: Cooks River Catchment*

© Sydney Metropolitan Catchment Management Authority, 2012.

10 Valentine Ave (PO Box 3720)
Parramatta NSW 2124
Phone: (02) 9895 7898
Web: www.sydney.cma.nsw.gov.au

Report series: This report is one of a series of ten Community Profile Analysis reports prepared for the Sydney Metropolitan CMA region:

- Report 1 Regional Profile
- **Report 2 Place Profile Cooks River Catchment**
- Report 3 Place Profile Georges River and Botany Bay
- Report 4 Place Profile Northern Bushy Burbs and Beaches
- Report 5 Place Profile Parramatta River
- Report 6 Place Profile Port Hacking and Southern Wilderness
- Report 7 Place Profile South-west Peri-urban
- Report 8 Place Profile Sydney City, Harbour and Beaches
- Report 9 Place Profile Western Sydney Woodlands
- Report 10 Appendix of Tables.

This material may be reproduced for non-commercial purpose in whole or in part, provided the meaning is unchanged and the source is acknowledged.

September 2012

Contents

Summary	1
1 Introduction.....	3
1.1 Purpose of this report.....	3
1.2 Report structure	3
1.3 Analysis approach.....	3
1.4 Local Government area and regional statistics.....	5
2 Population profile	6
2.1 Total population	6
2.2 Population density.....	7
2.3 Gender balance	7
2.4 Age distribution	8
2.5 Family structure	9
2.6 Indigenous population.....	9
2.7 Ethnicity (country of birth)	10
2.8 Language spoken at home.....	12
3 Income, employment, business and education profile	14
3.1 Personal income	14
3.2 Household income	15
3.3 Index of advantage/disadvantage	16
3.4 Employment.....	18
3.5 Industry of employment.....	18
3.6 Occupation	21
3.7 Business numbers and turnover.....	21
3.8 Value of tourism to the regional economy	23
3.9 Primary production.....	23
3.10 Level of education.....	24

3.11	Attendance at educational institutions	24
4	Residential profile	25
4.1	Dwelling types.....	25
4.2	Home ownership	26
4.3	Home internet connection	26
4.4	Residential water and energy use	27
4.5	Liveability index	27
4.6	Gentrification.....	28
5	Environmental engagement profile.....	28
5.1	Level of volunteering.....	28
5.2	Environmental concern	29
6	References	29

List of figures

Figure 1	The eight ‘Places’ that have been defined within the Sydney Metropolitan CMA region based on social, economic and ecological criteria	4
Figure 2	Population age distribution for Cooks River Catchment in 2006 and 2011 (ABS 2012a, 2012b).....	8
Figure 3	Index of Relative Socio-economic Advantage and Disadvantage deciles for Census Districts across Cooks River Catchment in 2006 (ABS 2008).....	17
Figure 4	Proportions of employed people in each of 17 categories of industry of employment in Cooks River Catchment in 2006 compared to the overall Sydney Metropolitan CMA region (ABS 2012i)	20
Figure 5	Locations and types of primary producers in the Cooks River Catchment	23

List of tables

Table 1	Local Government areas within Cooks River Catchment.....	5
Table 2	Cooks River Catchment population in 2006 and 2011 and population growth 2006-2011 (ABS 2012a, 2012b).....	6
Table 3	Estimated resident population (ERP) growth from 2001 to 2011 of Local Government areas across Cooks River Catchment (ABS 2012c)	6
Table 4	Population density in 2006 and 2011 and increase in population density between 2006 and 2011 for Cooks River Catchment (ABS 2012a, 2012b).....	7
Table 5	Gender balance of Cooks River Catchment in 2011 (ABS 2012a).....	8

Table 6 Family structure of Cooks River Catchment in 2011 (ABS 2012d).....	9
Table 7 Indigenous population of Cooks River Catchment in 2011 (ABS 2012a)	9
Table 8 Country of birth listed in order of highest to lowest number of people (ABS 2012e) 10	
Table 9 Comparison of the ten countries from which the highest proportion of people born outside Australia in Cooks River Catchment originate with the overall Sydney Metropolitan CMA region (in order of highest to lowest proportion).....	11
Table 10 Language spoken at home listed in order of highest to lowest number of people (ABS 2012f)	12
Table 11 Comparison of the ten languages other than English spoken at home by the highest proportion of people in Cooks River Catchment with the overall Sydney Metropolitan CMA region (in order of highest to lowest proportion).....	14
Table 12 Numbers and proportions of people receiving various amounts of personal weekly income in Cooks River Catchment in 2011 (ABS 2012g)	15
Table 13 Numbers and proportions of households receiving various amounts of weekly income in Cooks River Catchment in 2011 (ABS 2012h).	16
Table 14 Numbers and proportions of employed people in Cooks River Catchment in 2006 (ABS 2012i)	18
Table 15 Numbers and proportions of employed people in each of 17 categories of industry of employment in Cooks River Catchment in 2006 (ABS 2012i).....	19
Table 16 Numbers and proportions of employed people in each of nine categories of occupation in Cooks River Catchment in 2006 (ABS 2012i).....	21
Table 17 Numbers of businesses in various turnover size ranges for 19 industry categories in Cooks River Catchment in 2011, listed in order of the industry categories with highest to lowest total business numbers (ABS 2012o).....	22
Table 18 Numbers and proportions of people with non-school qualifications in Cooks River Catchment in 2006 (ABS 2012b).....	24
Table 19 Numbers and proportions of people attending educational institutions in Cooks River Catchment in 2011 (proportions are of total attendance) (ABS 2012j).....	24
Table 20 Numbers and proportions of different dwelling types in Cooks River Catchment in 2011 (ABS 2012k).....	25
Table 21 Numbers of people living in each of the different dwelling types in Cooks River Catchment in 2011 (ABS 2012k).....	25
Table 22 Numbers and proportions of dwellings owned and rented in Cooks River Catchment in 2011 (ABS 2012l).....	26
Table 23 Numbers and proportions of types of home internet connection in dwellings in Cooks River Catchment in 2011 (ABS 2012m).....	26

Table 24 Quality of Life survey rankings for Local Government areas across Cooks River Catchment (listed in order of ranking, where 1 is the highest quality of life and 590 the lowest) (BankWest 2008c) 27

Table 25 Numbers and proportions of volunteers in Cooks River Catchment in 2011 (ABS 2012n) 29

Summary

This Community Profile Analysis has been prepared to assist the Sydney Metropolitan Catchment Management Authority (CMA) develop an upgraded Catchment Action Plan and to provide reference information for other Sydney Metropolitan CMA activities.

The Sydney Metropolitan CMA has defined eight 'Places' within the CMA region based on social, economic and ecological criteria. These places are: Cooks River Catchment; Georges River and Botany Bay; Northern Bushy Burbs and Beaches; Parramatta River; Port Hacking and Southern Wilderness; South-west Peri-urban; Sydney City, Harbour and Beaches; and Western Sydney Woodlands.

The Community Profile Analysis comprises a series of ten reports covering both the overall Sydney Metropolitan CMA region (Report 1) and each of the eight Places (Reports 2 to 9). There is also an Appendix of Tables (Report 10). This specific report (Report 2) provides information about the Cooks River Catchment Place, and should be used in conjunction with *Report 1 Regional Profile*.

Key findings for Cooks River Catchment include:

- In 2006 the **population** of Cooks River Catchment was 403265, and in 2011 was 420329, a **population growth** of 4.23%. In 2011 Cooks River Catchment had the fifth highest population of the eight CMA Places, and from 2006-2011 also had the fifth highest population growth.
- In 2011 Cooks River Catchment had the highest **population density** of the eight CMA Places, and the fifth highest increase in population density between 2006 and 2011.
- The female population is higher than the male population in all eight CMA Places and the overall Sydney Metropolitan CMA region. The **gender imbalance** is least in Cooks River Catchment (female population 1.36% higher than male population).
- In 2011 the **Indigenous population** of Cooks River Catchment was 2197, which is 0.70% of the total Place population.
- The five countries from which the largest proportion of **people born outside Australia** in Cooks River Catchment originate are (in order of highest to lowest proportion): China excluding Special Administrative Regions and Taiwan; Lebanon; Greece; Vietnam; and India.
- The five **languages other than English spoken at home** by the highest proportion of people in Cooks River Catchment are (in order of highest to lowest proportion): Arabic; Greek; Chinese Languages - Mandarin; Chinese Languages - Cantonese; and Italian.
- Cooks River Catchment has the second highest proportion of people with lower **personal incomes** of all eight CMA Places, with 50.72% receiving \$599 per week and under.
- Cooks River Catchment has the second highest proportion of **low income households** of all eight CMA Places, with 29.73% receiving \$799 per week and under.
- There are high proportions of 1-2 and 3-4 decile **relatively disadvantaged** Census Districts in the western parts of Cooks River Catchment.

- Cooks River Catchment has lower proportions of people **employed in the industries** of property and business services; manufacturing; and finance and insurance than the overall Sydney Metropolitan CMA region. There are very low proportions of people working in the mining and agriculture, forestry and fishing industries in Cooks River Catchment.
- The five **industries with the highest total business numbers** in Cooks River Catchment are construction; transport, postal and warehousing; rental, hiring and real estate services; professional, scientific and technical services; and retail trade.
- In Cooks River Catchment, 69.62% of dwellings have a broadband **internet connection**, with only 2.45% of dwellings still having a dial up connection. However, 20.34% of dwellings have no internet connection, the second highest proportion of all eight CMA Places.
- The 2008 BankWest Quality of Life survey of 590 Local Government areas across Australia found that different areas of Sydney vary greatly in their **quality of life**.
- A study by the Australian Housing and Urban Research Institute (AHURI) found that the Marrickville and Randwick Local Government areas and the Concord part of the Canada Bay Local Government area experienced the most rapid **gentrification** in the Sydney region in the decade to 2006. Marrickville is located mostly within the Cooks River Catchment and Sydney City, Harbour and Beaches CMA Places. Because gentrification causes low income owners and renters to be diverted over time to other locations the impacts of the gentrification of these areas are likely to be being felt in other parts of Cooks River Catchment or in other CMA Places.
- Cooks River Catchment has the second lowest proportion of **volunteers** of all eight CMA Places (11.41%).

1 Introduction

1.1 Purpose of this report

This Community Profile Analysis report has been prepared to assist the Sydney Metropolitan Catchment Management Authority (CMA) develop an upgraded Catchment Action Plan and to provide reference information for other Sydney Metropolitan CMA activities.

The Sydney Metropolitan CMA is required to apply 'systems thinking' in upgrading its Catchment Action Plan (NRC 2012). Systems thinking has emerged as a new approach to natural resource management, and frames landscapes as dynamic systems with interacting social and ecological parts. To inform systems thinking, the CMA needs a better understanding of the current socio-economic status of its community and their attitudes towards the environment.

1.2 Report structure

To assist the implementation of systems thinking, the Sydney Metropolitan CMA has defined eight 'Places' within the CMA region based on social, economic and ecological criteria. These Places are shown in Figure 1.

The Community Profile Analysis comprises a series of reports covering both the overall Sydney Metropolitan CMA region (Report 1) and each of the eight Places (Reports 2 to 9). There is also an Appendix of Tables (Report 10).

This specific report (Report 2) provides information about the Cooks River Catchment Place, and should be used in conjunction with *Report 1 Regional Profile*.

1.3 Analysis approach

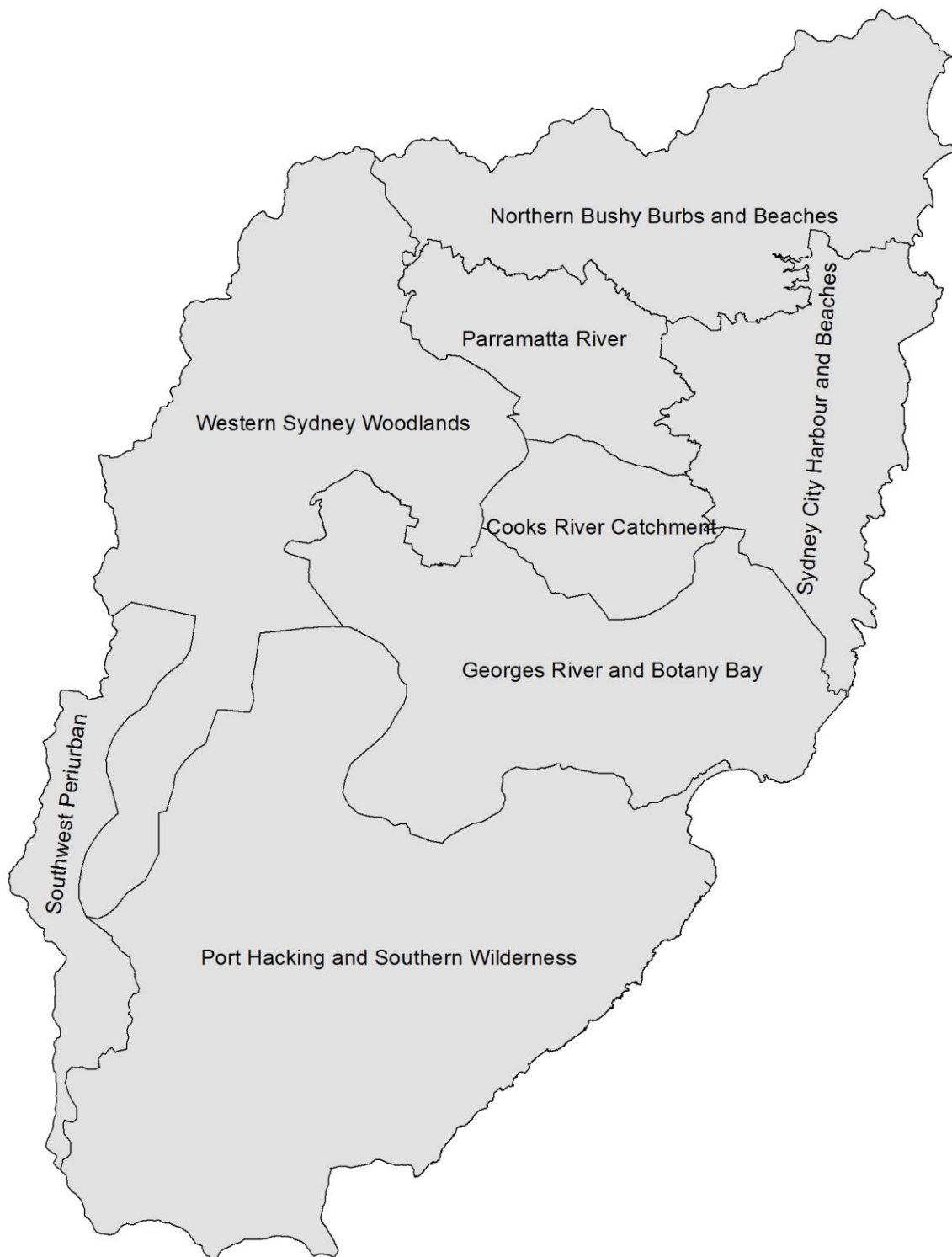
The Community Profile Analysis has been prepared using:

- Australian Bureau of Statistics (ABS) 2011 Census data at Statistical Area Level 1 (SA1) level
- Australian Bureau of Statistics (ABS) 2006 Census data at Collection District (CD) level
- other Australian Bureau of Statistics (ABS) data and publications
- statistics and references from sources other than the Australian Bureau of Statistics.

Until 2006 the Collection District (CD) was the smallest geographical area for which Australian Bureau of Statistics (ABS) Census data was available. From 2011 Collection Districts (CDs) were replaced with Statistical Areas Level 1 (SA1s) as part of the new Australian Statistical Geography Standard (ASGS) developed by the ABS for the collection and dissemination of geographic statistics (ABS 2011a). The SA1 has been designed as the smallest unit for the processing and release of Census data. SA1s are designed to remain relatively constant over several Censuses.

To assist analysis of Census data at Statistical Area Level 1 (SA1) and Collection District (CD) level, the Sydney Metropolitan CMA prepared and provided CD and SA1 Geographic Information System (GIS) maps of each of the eight Places.

Figure 1 The eight 'Places' that have been defined within the Sydney Metropolitan CMA region based on social, economic and ecological criteria



Two types of Australian Bureau of Statistics (ABS) population statistics are used in this Community Profile Analysis: place of usual residence and estimated resident population.

Place of usual residence (ABS 2011b) is used when conducting a Census data analysis such as this Community Profile Analysis. However, the estimated resident population (ERP) (ABS 2011c) is the official measure of the population of Australia. In the Census year, the ERP is first calculated at the Census date (9 August for the 2011 Census), and then backdated to calculate the ERP at 30 June of the Census year. In the compilation of the 30 June ERP for a Census year, important adjustments are made to the Census count based on place of usual residence.

All population statistics in this report are place of usual residence unless otherwise stated. It is important to note that the place of usual residence statistics in this report should not be quoted as an official population measure.

1.4 Local Government area and regional statistics

Some relevant statistics for Local Government areas and larger Sydney regions than the Sydney Metropolitan region have been used in this Community Profile Analysis. The larger Sydney regions include Greater Sydney and the Sydney tourism region.

Because the eight CMA Places have been defined on the basis of social, economic and ecological criteria they do not follow Local Government boundaries. Because of this, the use of Local Government area statistics needs to consider the proportions of each Local Government area within each Place. The Local Government areas within Cooks River Catchment are shown in Table 1. If the proportion of Local Government area was less than 1% it has not been included in the table.

Table 1 Local Government areas within Cooks River Catchment

Local Government	Total Local Government area (km ²)	Local Government area within Place (km ²)	Proportion of Local Government area within Place
Canterbury	33.56387591	27.238522	81.15%
Marrickville	16.51963057	11.44140988	69.26%
Burwood	7.128170441	4.816337715	67.57%
Rockdale	28.2192817	15.51742307	54.99%
Strathfield	13.89962782	7.493526312	53.91%
Ashfield	8.281188157	3.336669508	40.29%
Hurstville	22.72414757	2.221489268	9.78%
Bankstown	76.80012751	7.051977595	9.18%

2 Population profile

2.1 Total population

The total population of Cooks River Catchment in 2006 and 2011 is shown in Table 2 (ABS 2012a, 2012b). Table 2 also shows 2006-2011 population growth for Cooks River Catchment in comparison to the overall Sydney Metropolitan CMA region.

In 2011 Cooks River Catchment had the fifth highest population of the eight CMA Places, and from 2006-2011 also had the fifth highest population growth.

Table 2 Cooks River Catchment population in 2006 and 2011 and population growth 2006-2011 (ABS 2012a, 2012b)

Population 2006	403265
Population 2011	420329
Population growth 2006-2011	4.23%
Comparative population growth for Sydney Metropolitan CMA region	6.74%

The estimated resident population (ERP) growth from 2001 to 2011 of Local Government areas across Cooks River Catchment is shown in Table 3 (ABS 2012c). These population figures are for the whole of each Local Government area, including parts of some Local Government areas outside Cooks River Catchment, so their use needs to consider the information in Section 1.4 of this report.

Table 3 Estimated resident population (ERP) growth from 2001 to 2011 of Local Government areas across Cooks River Catchment (ABS 2012c)

Local Government	Estimated resident population (ERP) growth for whole of each Local Government area (pr = preliminary ABS estimates)					
	Population 2001	Population 2006	Population 2011 (pr)	2001-2011 population increase (pr)	2001-2011 population growth (pr)	Average annual population growth 2001-2011 (pr)
Canterbury	137492	135605	144751	7259	5.3%	0.5%
Marrickville	76743	75546	81489	4746	6.2%	0.6%
Burwood	30580	32395	34305	3725	12.2%	1.2%
Rockdale	92676	96334	102843	10167	11.0%	1.0%
Strathfield	29433	33231	37141	7708	26.2%	2.4%
Ashfield	40521	41520	43683	3162	7.8%	0.8%
Hurstville	74088	76469	82569	8481	11.4%	1.1%
Bankstown	171994	176857	190637	18643	10.8%	1.0%
Totals	653527	667957	717418	63891	9.8%	0.9%

The population in 2006 and 2011 and population growth for 2006-2011 for the overall Sydney Metropolitan CMA region can be found in the Regional Profile (Report 1 in this report series). The estimated resident population (ERP) growth from 2001-2011 of Local Government areas in each of the eight Sydney Metropolitan CMA Places can be found in the separate Place Reports (Reports 2 to 9 in this report series). A detailed table showing annual estimated resident population (ERP) for 2001-2011 for all Local Government areas across the Sydney Metropolitan CMA region can be found in the Appendix of Tables (Report 10 in this report series).

2.2 Population density

The population density in 2006 and 2011 and increase in population density between 2006 and 2011 for Cooks River Catchment are shown in Table 4 (ABS 2012a, 2012b).

In 2011 Cooks River Catchment had the highest population density of the eight CMA Places, and the fifth highest increase in population density between 2006 and 2011.

Table 4 Population density in 2006 and 2011 and increase in population density between 2006 and 2011 for Cooks River Catchment (ABS 2012a, 2012b).

Place Area (km ²)	79.27157
Population 2006	296933
Density 2006	3745.769
Population 2011	314361
Density 2011	3965.621
Density increase 2006-2011	5.87%
Comparative density increase 2006-2011for Sydney Metropolitan CMA region	6.74%

The population density in 2006 and 2011 and increase in population density between 2006 and 2011 for the overall Sydney Metropolitan CMA region can be found in the Regional Profile (Report 1 in this report series), and for each of the eight Sydney Metropolitan CMA Places can be found in the separate Place Reports (Reports 2 to 9 in this report series).

2.3 Gender balance

The gender balance of Cooks River Catchment in 2011 is shown in Table 5 (ABS 2012a).

The female population is higher than the male population in all eight Places and the overall Sydney Metropolitan CMA region. The gender imbalance is least in Cooks River Catchment (female population 1.36% higher than male population).

Table 5 Gender balance of Cooks River Catchment in 2011 (ABS 2012a)

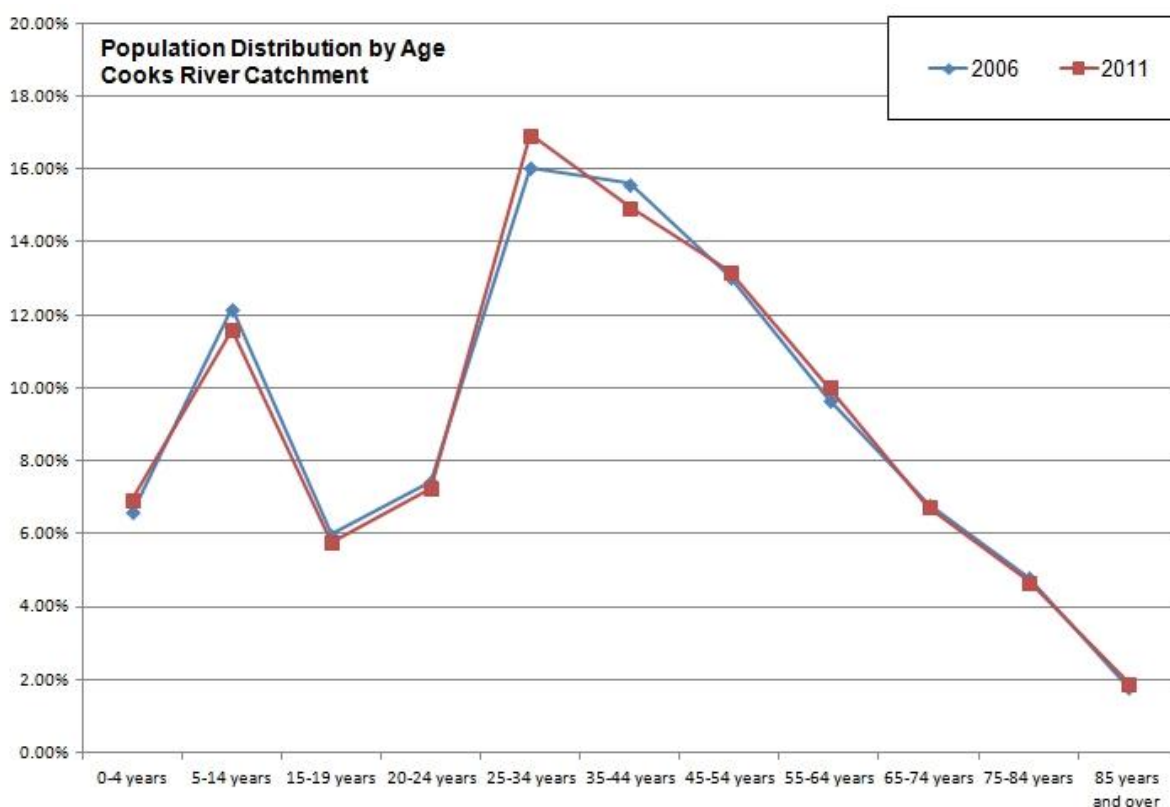
Males	156117
Females	158244
Proportion by which female population is higher than male population	1.36%
Comparative proportion by which female population is higher than male population in Sydney Metropolitan CMA region	2.81%

The gender balance in 2011 for the overall Sydney Metropolitan CMA region can be found in the Regional Profile (Report 1 in this report series), and for each of the eight Sydney Metropolitan CMA Places can be found in the separate Place Reports (Reports 2 to 9 in this report series).

2.4 Age distribution

The population age distribution for Cooks River Catchment in 2006 and 2011 is shown in Figure 2 (ABS 2012a, 2012b).

Figure 2 Population age distribution for Cooks River Catchment in 2006 and 2011 (ABS 2012a, 2012b)



The population age distribution for the overall Sydney Metropolitan CMA region in 2011 can be found in the Regional Profile (Report 1 in this report series), and for each of the eight Sydney Metropolitan CMA Places can be found in the separate Place Reports (Reports 2 to

9 in this report series). Detailed tables showing numbers and proportions of people for each of the age levels can be found in the Appendix of Tables (Report 10 in this report series).

2.5 Family structure

The family structure of Cooks River Catchment in 2011 is shown in Table 6 (ABS 2012d).

Table 6 Family structure of Cooks River Catchment in 2011 (ABS 2012d)

Couple families with no children	25598
Couple families with children	40462
One parent families	13501
Other families	2040
Total families	81601

The family structure for the overall Sydney Metropolitan CMA region in 2011 can be found in the Regional Profile (Report 1 in this report series), and for each of the eight Sydney Metropolitan CMA Places can be found in the separate Place Reports (Reports 2 to 9 in this report series). A detailed family structure table can be found in the Appendix of Tables (Report 10 in this report series).

2.6 Indigenous population

The Indigenous population of Cooks River Catchment in 2011 is shown in (ABS 2012a)

Table 7 Indigenous population of Cooks River Catchment in 2011 (ABS 2012a)

Aboriginal population	2016
Torres Strait Islander population	115
Both Aboriginal and Torres Strait Islander population	66
Total Indigenous population	2197
Total Place population	314361
Indigenous proportion of total population	0.70%
Comparative Indigenous proportion of total population for Sydney Metropolitan CMA region	0.86%

The Indigenous population in 2011 for the overall Sydney Metropolitan CMA region can be found in the Regional Profile (Report 1 in this report series), and for each of the eight Sydney Metropolitan CMA Places can be found in the separate Place Reports (Reports 2 to 9 in this report series). A detailed table showing the gender balance of the Indigenous population can be found in the Appendix of Tables (Report 10 in this report series).

2.7 Ethnicity (country of birth)

The country of birth of people in Cooks River Catchment is shown in Table 8 (ABS 2012e). The ten countries from which the highest proportion of people born outside Australia in Cooks River Catchment originate are (in order of highest to lowest proportion):

1. China excluding Special Administrative Regions and Taiwan
2. Lebanon
3. Greece
4. Vietnam
5. India
6. Italy
7. United Kingdom, Channel Islands and Isle of Man
8. New Zealand
9. Republic of South Korea
10. Philippines

Cooks River Catchment has a higher proportion of people born outside Australia (51.56%) than the overall Sydney Metropolitan CMA region (44.74%).

Table 9 compares the ten countries from which the highest proportion of people born outside Australia in Cooks River Catchment originate with the overall Sydney Metropolitan CMA region.

Table 8 Country of birth listed in order of highest to lowest number of people (ABS 2012e)

Country of birth	People in Cooks River Catchment	Proportion of Place population
Australia	152253	48.44%
China excluding Special Administrative Regions and Taiwan	20192	6.42%
Lebanon	13877	4.41%
Greece	9809	3.12%
Vietnam	7758	2.47%
India	5881	1.87%
Italy	5732	1.82%
United Kingdom, Channel Islands and Isle of Man	5514	1.75%
New Zealand	4945	1.57%
Korea Republic of South	4474	1.42%
Philippines	4218	1.34%
Indonesia	3361	1.07%
Hong Kong Special Administrative Region of China	2917	0.93%
Former Yugoslav Republic of Macedonia	2770	0.88%
Egypt	2328	0.74%
Fiji	2099	0.67%
Malaysia	1655	0.53%

Country of birth	People in Cooks River Catchment	Proportion of Place population
Thailand	1287	0.41%
Sri Lanka	1236	0.39%
Ireland	988	0.31%
Croatia	848	0.27%
Germany	802	0.26%
Turkey	771	0.25%
United States of America	731	0.23%
South Africa	710	0.23%
Poland Persons	686	0.22%
Japan	665	0.21%
Iraq	649	0.21%
Singapore	649	0.21%
Malta	524	0.17%
South Eastern Europe not further defined	397	0.13%
Canada	355	0.11%
Bosnia and Herzegovina	276	0.09%
Cambodia	276	0.09%
Netherlands	210	0.07%
Born elsewhere	31984	10.18%
Country of birth not stated	20508	6.52%

Table 9 Comparison of the ten countries from which the highest proportion of people born outside Australia in Cooks River Catchment originate with the overall Sydney Metropolitan CMA region (in order of highest to lowest proportion)

Cooks River Catchment	Sydney Metropolitan CMA region
China excluding Special Administrative Regions and Taiwan	China excluding Special Administrative Regions and Taiwan
Lebanon	United Kingdom, Channel Islands and Isle of Man
Greece	Vietnam
Vietnam	India
India	New Zealand
Italy	Lebanon
United Kingdom, Channel Islands and Isle of Man	Philippines
New Zealand	Korea Republic of South
Korea Republic of South	Italy
Philippines	Hong Kong Special Administrative Region of China

The country of birth for people in the overall Sydney Metropolitan CMA region can be found in the Regional Profile (Report 1 in this report series), and for people in each of the other

seven Sydney Metropolitan CMA Places it can be found in the other Place Reports (Reports 2 to 9 in this report series). A detailed table showing country of birth for the Sydney Metropolitan CMA region and all of the eight Places can be found in the Appendix of Tables (Report 10 in this report series).

2.8 Language spoken at home

The language spoken at home by people in Cooks River Catchment is shown in Table 10 (ABS 2012f). The ten languages other than English spoken at home by the highest proportion of people in Cooks River Catchment are (in order of highest to lowest proportion):

1. Arabic
2. Greek
3. Chinese Languages - Mandarin
4. Chinese Languages - Cantonese
5. Italian
6. Vietnamese
7. Indo Aryan Languages - Bengali
8. Korean
9. Indo Aryan Languages - Other
10. Macedonian

Cooks River Catchment has a higher proportion of people who speak languages other than English at home (63.13%) than the overall Sydney Metropolitan CMA region (44.55%).

Table 11 compares the ten languages other than English spoken at home by the highest proportion of people in Cooks River Catchment with the overall Sydney Metropolitan CMA region.

Table 10 Language spoken at home listed in order of highest to lowest number of people (ABS 2012f)

Language spoken at home	People in Cooks River Catchment	Proportion of Place population
English only	115884	36.87%
Arabic	38165	12.14%
Greek	24055	7.65%
Chinese Languages – Mandarin	16403	5.22%
Chinese Languages – Cantonese	15532	4.94%
Italian	9323	2.97%
Vietnamese	9231	2.94%
Indo Aryan Languages – Bengali	6808	2.17%
Korean	5435	1.73%
Indo Aryan Languages – Other	5363	1.71%
Macedonian	4534	1.44%
Spanish	3986	1.27%
Portuguese	3820	1.22%
Southeast Asian Austronesian Languages - Indonesian	3727	1.19%
Indo Aryan Languages – Hindi	3048	0.97%

Language spoken at home	People in Cooks River Catchment	Proportion of Place population
Indo Aryan Languages – Urdu	2893	0.92%
Southeast Asian Austronesian Languages - Tagalog	2403	0.76%
Chinese Languages – Other	1798	0.57%
Tamil	1424	0.45%
Thai	1250	0.40%
Turkish	1230	0.39%
Southeast Asian Austronesian Languages – Filipino	1162	0.37%
Croatian	1134	0.36%
Indo Aryan Languages – Punjabi	879	0.28%
Serbian	879	0.28%
French	859	0.27%
Polish	809	0.26%
Japanese	770	0.24%
Russian	751	0.24%
Samoan	727	0.23%
German	630	0.20%
Maltese	430	0.14%
Hungarian	386	0.12%
Iranic Languages - Persian excluding Dari	377	0.12%
Assyrian	328	0.10%
Southeast Asian Austronesian Languages – Other	317	0.10%
Indo Aryan Languages – Sinhalese	265	0.08%
Iranic Languages – Other	245	0.08%
Khmer	150	0.05%
Dutch	133	0.04%
Iranic Languages – Dari	54	0.02%
Australian Indigenous Languages	48	0.02%
Other languages	8319	2.65%
Language spoken at home not stated	18328	5.83%

Table 11 Comparison of the ten languages other than English spoken at home by the highest proportion of people in Cooks River Catchment with the overall Sydney Metropolitan CMA region (in order of highest to lowest proportion)

Cooks River Catchment	Sydney Metropolitan CMA region
Arabic	Arabic
Greek	Chinese Languages – Mandarin
Chinese Languages – Mandarin	Chinese Languages – Cantonese
Chinese Languages – Cantonese	Vietnamese
Italian	Greek
Vietnamese	Italian
Indo Aryan Languages – Bengali	Spanish
Korean	Korean
Indo Aryan Languages – Other	Indo Aryan Languages – Hindi
Macedonian	Indo Aryan Languages – Other

The language spoken at home by people in the overall Sydney Metropolitan CMA region can be found in the Regional Profile (Report 1 in this report series), and for people in each of the other seven Sydney Metropolitan CMA Places it can be found in the other Place Reports (Reports 2 to 9 in this report series). A detailed table showing language spoken at home for the Sydney Metropolitan CMA region and all of the eight Places can be found in the Appendix of Tables (Report 10 in this report series).

3 Income, employment, business and education profile

3.1 Personal income

The numbers and proportions of people receiving various amounts of personal weekly income in Cooks River Catchment in 2011 are shown in Table 12 (ABS 2012g).

Cooks River Catchment has the second highest proportion of people with lower personal incomes of all eight CMA Places, with 50.72% receiving \$599 per week and under.

Table 12 Numbers and proportions of people receiving various amounts of personal weekly income in Cooks River Catchment in 2011 (ABS 2012g)

Negative or nil income	28508	11.13%
\$1-\$199	18425	7.19%
\$200-\$299	29966	11.70%
\$300-\$399	25274	9.87%
\$400-\$599	27719	10.82%
\$600-\$799	25400	9.92%
\$800-\$999	19860	7.76%
\$1000-\$1249	18259	7.13%
\$1250-\$1499	12570	4.91%
\$1500-\$1999	14841	5.80%
\$2000 or more	12547	4.90%
Personal income not stated	22717	8.87%

The numbers and proportions of people receiving various amounts of personal weekly income in the overall Sydney Metropolitan CMA region in 2011 can be found in the Regional Profile (Report 1 in this report series), and for the other seven Sydney Metropolitan CMA Places can be found in the other Place Reports (Reports 2 to 9 in this report series). Detailed tables showing gender breakdown for personal weekly income can be found in the Appendix of Tables (Report 10 in this report series).

3.2 Household income

The numbers and proportions of households receiving various amounts of weekly income in Cooks River Catchment in 2011 are shown in Table 13 (ABS 2012h).

Cooks River Catchment has the second highest proportion of low income households of all eight CMA Places, with 29.73% receiving \$799 per week and under.

Table 13 Numbers and proportions of households receiving various amounts of weekly income in Cooks River Catchment in 2011 (ABS 2012h).

Negative or nil income	2050	1.93%
\$1-\$199	1836	1.73%
\$200-\$299	3029	2.86%
\$300-\$399	6005	5.66%
\$400-\$599	9654	9.10%
\$600-\$799	8963	8.45%
\$800-\$999	8069	7.61%
\$1000-\$1249	8607	8.11%
\$1250-\$1499	7523	7.09%
\$1500-\$1999	12089	11.40%
\$2000-\$2499	8437	7.95%
\$2500-\$2999	7441	7.01%
\$3000-\$3499	4813	4.54%
\$3500-\$3999	2340	2.21%
\$4000 or more	3981	3.75%
Partial income stated	8456	7.97%
All incomes not stated	2791	2.63%

The numbers and proportions of households receiving various amounts of weekly income in the overall Sydney Metropolitan CMA region in 2011 can be found in the Regional Profile (Report 1 in this report series), and for the other seven Sydney Metropolitan CMA Places can be found in the other Place Reports (Reports 2 to 9 in this report series). Detailed tables showing the family household and non-family household breakdown for household weekly income can be found in the Appendix of Tables (Report 10 in this report series).

3.3 Index of advantage/disadvantage

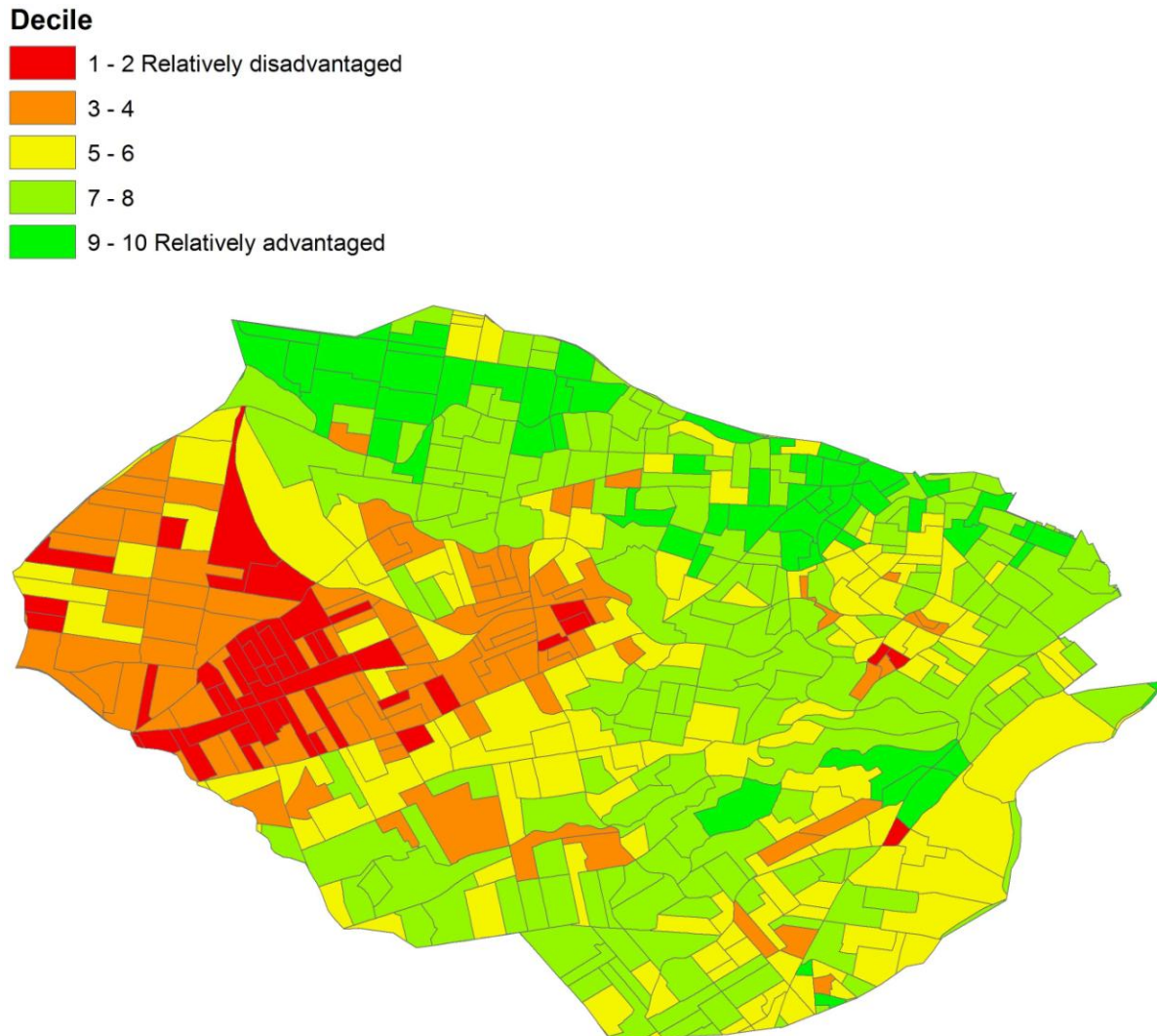
The Index of Relative Socio-economic Advantage and Disadvantage is a continuum of advantage (high score values) to disadvantage (low score values), and is derived from Australian Bureau of Statistics (ABS) Census variables related to both advantage and disadvantage (ABS 2008). It is one of four Socio-Economic Indexes for Areas (SEIFA). SEIFA uses a broad definition of relative socio-economic disadvantage in terms of people's access to material and social resources and their ability to participate in society. While SEIFA represents an average of all people living in an area, SEIFA does not represent the individual situation of each person.

The ABS applies deciles to SEIFA scores. All areas are ordered from lowest to highest score, and the lowest 10% of areas are given a decile number of 1 and so on, up to the highest 10% of areas which are given a decile number of 10. This means that areas are divided up into ten groups, depending on their score.

The Index of Relative Socio-economic Advantage and Disadvantage deciles for Census Districts across Cooks River Catchment in 2006 are shown in Figure 3 (ABS 2008). Not all Census Districts in the Sydney region have SEIFA scores because the ABS does not give scores to around 3% of Census Districts due to low populations or high levels of non-response in Census.

There are high proportions of 1-2 and 3-4 decile relatively disadvantaged Census Districts in the western parts of Cooks River Catchment.

Figure 3 Index of Relative Socio-economic Advantage and Disadvantage deciles for Census Districts across Cooks River Catchment in 2006 (ABS 2008)



An Index of Relative Socio-economic Advantage and Disadvantage decile map for the overall Sydney Metropolitan CMA region in 2006 can be found in the Regional Profile (Report 1 in this report series), and maps for the other seven Sydney Metropolitan CMA Places can be found in the other Place Reports (Reports 2 to 9 in this report series).

3.4 Employment

The numbers and proportions of employed people in Cooks River Catchment in 2006 are shown in Table 14 (ABS 2012i).

Total unemployment across all eight CMA Places ranged between 1.68% and 3.58%.

Table 14 Numbers and proportions of employed people in Cooks River Catchment in 2006 (ABS 2012i)

Employed, worked full-time	83639	28.17%
Employed, worked part-time	34187	11.51%
Employed, away from work	8932	3.01%
Total Employed	126758	42.69%
Unemployed, looking for full-time work	5497	1.85%
Unemployed, looking for part-time work	3453	1.16%
Total Unemployed	8950	3.01%
Not in the labour force	85908	28.93%
Not stated	19599	6.60%
Not applicable	55734	18.77%

The numbers and proportions of employed people in the overall Sydney Metropolitan CMA region in 2006 can be found in the Regional Profile (Report 1 in this report series), and for the other seven Sydney Metropolitan CMA Places can be found in the other Place Reports (Reports 2 to 9 in this report series).

3.5 Industry of employment

The numbers and proportions of people in each of 17 categories of industry of employment in Cooks River Catchment in 2006 are shown in Table 15 (ABS 2012i). The proportions of people in each of the 17 categories in Cooks River Catchment in 2006 compared to the overall Sydney Metropolitan CMA region are shown in Figure 4 (ABS 2012i).

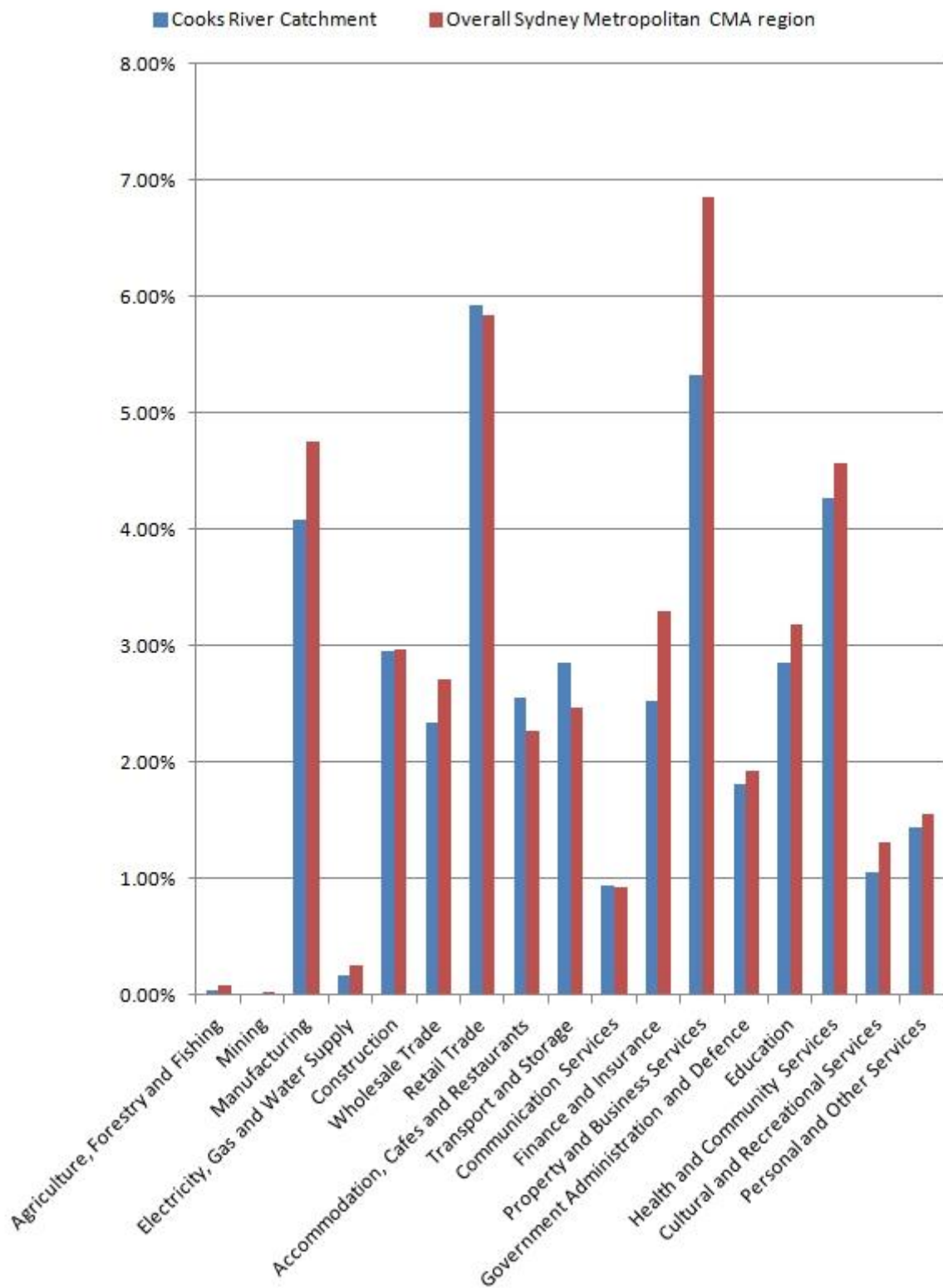
Cooks River Catchment has lower proportions of people employed in the property and business services; manufacturing; and finance and insurance industries than the overall Sydney Metropolitan CMA region.

There are very low proportions of people working in the mining and agriculture, forestry and fishing industries in Cooks River Catchment.

Table 15 Numbers and proportions of employed people in each of 17 categories of industry of employment in Cooks River Catchment in 2006 (ABS 2012i)

Agriculture, Forestry and Fishing	115	0.04%
Mining	22	0.01%
Manufacturing	12149	4.09%
Electricity, Gas and Water Supply	499	0.17%
Construction	8782	2.96%
Wholesale Trade	6971	2.35%
Retail Trade	17586	5.92%
Accommodation, Cafes and Restaurants	7592	2.56%
Transport and Storage	8504	2.86%
Communication Services	2785	0.94%
Finance and Insurance	7490	2.52%
Property and Business Services	15837	5.33%
Government Administration and Defence	5376	1.81%
Education	8487	2.86%
Health and Community Services	12694	4.27%
Cultural and Recreational Services	3140	1.06%
Personal and Other Services	4277	1.44%
Non-Classifiable Economic Units	1705	0.57%
Not stated	2760	0.93%
Not applicable	170191	57.31%
Total	296962	

Figure 4 Proportions of employed people in each of 17 categories of industry of employment in Cooks River Catchment in 2006 compared to the overall Sydney Metropolitan CMA region (ABS 2012i)



The industries of employment for the overall Sydney Metropolitan CMA region can be found in the Regional Profile (Report 1 in this report series), and for the other seven Sydney Metropolitan CMA Places can be found in the other Place Reports (Reports 2 to 9 in this report series). Detailed tables can be found in the Appendix of Tables (Report 10 in this report series).

3.6 Occupation

The numbers and proportions of employed people in each of nine categories of occupation in Cooks River Catchment in 2006 are shown in Table 16 (ABS 2012i).

Table 16 Numbers and proportions of employed people in each of nine categories of occupation in Cooks River Catchment in 2006 (ABS 2012i)

Managers and Administrators	8563	2.88%
Professionals	26750	9.01%
Associate Professionals	13950	4.70%
Tradespersons and Related Workers	13446	4.53%
Advanced Clerical and Service Workers	4078	1.37%
Intermediate Clerical, Sales and Service Workers	22175	7.47%
Intermediate Production and Transport Workers	10729	3.61%
Elementary Clerical, Sales and Service Workers	13203	4.45%
Labourers and Related Workers	10382	3.50%
Not stated	1658	0.56%
Inadequately described	1854	0.62%
Not applicable	170189	57.31%
Total	296977	

The occupations of employed people in the overall Sydney Metropolitan CMA region can be found in the Regional Profile (Report 1 in this report series), and for the other seven Sydney Metropolitan CMA Places can be found in the other Place Reports (Reports 2 to 9 in this report series). A detailed table can be found in the Appendix of Tables (Report 10 in this report series).

3.7 Business numbers and turnover

The numbers of businesses in various turnover size ranges for 19 industry categories in Cooks River Catchment in 2011 are shown in Table 17 (ABS 2012o).

The smallest scale at which Australian Bureau of Statistics (ABS) counts of Australian businesses are available is Statistical Area 2 (SA2), and this data has been used to prepare Table 17. Due to the nature of the data sources for these counts (primarily the Australian Business Register) multi-location businesses can only be attributed by the ABS to a single SA2. Because of this, business counts at the SA2 level do not necessarily reflect all business operations within that SA2, and this needs to be considered when using the information in Table 17.

Additionally, because SA2s are larger than the Statistical Area 1s (SA1s) and Census Districts (CDs) used in compiling most of the other information in this report series, the SA2s overlap the boundaries of the Sydney Metropolitan CMA region and the boundaries of each of the eight CMA Places to a greater extent. Because of this a very small proportion of the counts in Table 17 relates to areas outside Cooks River Catchment, and this needs to be considered when using the information.

Table 17 Numbers of businesses in various turnover size ranges for 19 industry categories in Cooks River Catchment in 2011, listed in order of the industry categories with highest to lowest total business numbers (ABS 2012o)

Industry	Numbers of businesses in turnover size ranges						Total
	Zero to \$50k	\$50k to less than \$100k	\$100k to less than \$200K	\$200k to less than \$500k	\$500k to less than \$2m	\$2m or more	
Construction	1382	1740	1008	952	491	238	5811
Transport, Postal and Warehousing	2489	1295	412	226	122	82	4626
Rental, Hiring and Real Estate Services	1244	856	720	558	293	84	3755
Professional, Scientific and Technical Services	1459	607	720	542	272	66	3666
Retail Trade	685	340	387	541	599	269	2821
Administrative and Support Services	858	299	343	264	144	70	1978
Health Care and Social Assistance	290	222	354	551	382	55	1854
Wholesale Trade	423	189	181	287	322	248	1650
Financial and Insurance Services	776	306	214	222	99	31	1648
Manufacturing	360	229	229	302	276	172	1568
Other Services	359	307	300	241	155	43	1405
Accommodation and Food Services	165	206	266	440	160	64	1301
Arts and Recreation Services	192	66	72	56	30	6	422
Education and Training	169	71	60	56	18	21	395
Information Media and Telecommunications	135	60	43	37	23	6	304
Public Administration and Safety	110	27	33	39	15	18	242
Agriculture, Forestry and Fishing	121	29	15	10	12	0	187
Electricity, Gas, Water and Waste Services	15	9	9	9	6	3	51
Mining	4	3	6	3	0	0	16
Total	11236	6861	5372	5336	3419	1476	33700

The numbers of businesses in various turnover size ranges in the overall Sydney Metropolitan CMA region can be found in the Regional Profile (Report 1 in this report series), and for the other seven Sydney Metropolitan CMA Places can be found in the other Place Reports (Reports 2 to 9 in this report series).

3.8 Value of tourism to the regional economy

Information on the numbers of tourism businesses and the expenditure by domestic and international tourists in the Sydney tourism region can be found in the Regional Profile (Report 1 in this report series). The Sydney tourism region, a larger region than the Sydney Metropolitan CMA region, is the smallest scale at which these statistics are available.

3.9 Primary production

The locations and types of primary producers in Cooks River Catchment are shown in Figure 5.

Figure 5 Locations and types of primary producers in the Cooks River Catchment



The locations and types of primary producers in the overall Sydney Metropolitan CMA region can be found in the Regional Profile (Report 1 in this report series), and for the other seven

Sydney Metropolitan CMA Places can be found in the other Place Reports (Reports 2 to 9 in this report series).

3.10 Level of education

The numbers and proportions of people with non-school qualifications in Cooks River Catchment in 2006 are shown in Table 18 (ABS 2012b).

Table 18 Numbers and proportions of people with non-school qualifications in Cooks River Catchment in 2006 (ABS 2012b)

Postgraduate Degree Level	10044	3.38%
Graduate Diploma and Graduate Certificate Level	2855	0.96%
Bachelor Degree Level	32762	11.03%
Advanced Diploma and Diploma Level	17313	5.83%
Certificate Level	28694	9.66%
Level of education not stated	32104	10.81%
Level of education inadequately described	3850	1.30%
Not applicable	169325	57.02%

The numbers and proportions of people with non-school qualifications in the overall Sydney Metropolitan CMA region in 2006 can be found in the Regional Profile (Report 1 in this report series), and for the other seven Sydney Metropolitan CMA Places can be found in the other Place Reports (Reports 2 to 9 in this report series).

3.11 Attendance at educational institutions

The numbers and proportions of people attending educational institutions in Cooks River Catchment in 2011 are shown in Table 19 (ABS 2012j).

Table 19 Numbers and proportions of people attending educational institutions in Cooks River Catchment in 2011 (proportions are of total attendance) (ABS 2012j)

Pre school	4654	4.63%
Infants and Primary school	22257	22.14%
Secondary school	18575	18.48%
Technical or Further Educational institution	8094	8.05%
University or other Tertiary Institution	18264	18.17%
Other type of educational institution	3541	3.52%
Type of educational institution not stated	25156	25.02%
Total attendance	100541	

The numbers and proportions of people attending educational institutions in the overall Sydney Metropolitan CMA region in 2011 can be found in the Regional Profile (Report 1 in

this report series), and for the other seven Sydney Metropolitan CMA Places can be found in the other Place Reports (Reports 2 to 9 in this report series). A detailed table showing a breakdown of the different types of Infant and Primary schools and Secondary schools attended can be found in the Appendix of Tables (Report 10 in this report series).

4 Residential profile

4.1 Dwelling types

The numbers and proportions of different dwelling types in Cooks River Catchment in 2011 are shown in Table 20 (ABS 2012k). The numbers of people living in each of those dwelling types in 2011 is shown in Table 21 (ABS 2012k)

Table 20 Numbers and proportions of different dwelling types in Cooks River Catchment in 2011 (ABS 2012k)

Separate houses	56594	50.17%
Semi detached, row or terrace houses, townhouses	13483	11.95%
Flats, units, or apartments	34936	30.97%
Other dwellings	812	0.72%
Dwelling structure not stated	250	0.22%
Total occupied dwellings	106075	94.04%
Unoccupied private dwellings	6728	5.96%
Total private dwellings	112803	

Table 21 Numbers of people living in each of the different dwelling types in Cooks River Catchment in 2011 (ABS 2012k)

People in separate houses	175135
People in semi detached, row or terrace houses, townhouses	36153
People in flats, units, or apartments	79645
People in other dwellings	2136
People in dwelling structure not stated	634
Total people in private dwellings	293703
People in separate houses	175135

The numbers of different dwelling types and numbers of people living in each of those different dwelling types in the overall Sydney Metropolitan CMA region in 2011 can be found in the Regional Profile (Report 1 in this report series), and for the other seven Sydney Metropolitan CMA Places can be found in the other Place Reports (Reports 2 to 9 in this report series).

4.2 Home ownership

The numbers and proportions of dwellings owned and rented in Cooks River Catchment in 2011 are shown in Table 22 (ABS 2012l).

Table 22 Numbers and proportions of dwellings owned and rented in Cooks River Catchment in 2011 (ABS 2012l)

Owned outright	33486	31.57%
Owned with a mortgage	32209	30.36%
Rented	36328	34.25%
Other tenure type	627	0.59%
Tenure type not stated	3423	3.23%

The numbers and proportions of dwellings owned and rented in the overall Sydney Metropolitan CMA region in 2011 can be found in the Regional Profile (Report 1 in this report series), and for the other seven Sydney Metropolitan CMA Places can be found in the other Place Reports (Reports 2 to 9 in this report series). A detailed table showing a breakdown of rental types can be found in the Appendix of Tables (Report 10 in this report series).

4.3 Home internet connection

The numbers and proportions of types of home internet connection in dwellings in Cooks River Catchment in 2011 are shown in Table 23 (ABS 2012m).

In Cooks River Catchment, 69.62% of dwellings have a broadband internet connection, with only 2.45% of dwellings still having a dial up connection. However, 20.34% of dwellings have no internet connection, the second highest proportion of all eight CMA Places.

Table 23 Numbers and proportions of types of home internet connection in dwellings in Cooks River Catchment in 2011 (ABS 2012m)

Broadband	73853	69.62%
Dial up	2597	2.45%
Other type of internet connection	3672	3.46%
Total dwellings with internet connection	80122	75.53%
No internet connection	21576	20.34%
Internet connection not stated	4387	4.14%

The numbers and proportions of types of home internet connection in dwellings in the overall Sydney Metropolitan CMA region in 2011 can be found in the Regional Profile (Report 1 in this report series), and for the other seven Sydney Metropolitan CMA Places can be found in the other Place Reports (Reports 2 to 9 in this report series).

4.4 Residential water and energy use

In 2006 the Independent Pricing and Regulatory Tribunal of New South Wales (IPART) conducted a survey of residential household water, electricity and gas consumers in the greater Sydney region. Whilst not including information for individual areas in Sydney, the survey report *Residential energy and water use in Sydney, the Blue Mountains and Illawarra - Results from the 2006 household survey* (IPART 2007) provides valuable information about the characteristics of residential households and their energy and water consumption. Information on the survey results can be found in the Regional Profile (Report 1 in this report series).

Additionally, Ausgrid has published the electricity use of each Local Government area across greater Sydney including the amount of solar generation that is exported to the electricity grid (Ausgrid 2011). A table showing this information can be found in the Appendix of Tables (Report 10 in this report series). The Ausgrid electricity network services Sydney, the Hunter and the Central Coast.

4.5 Liveability index

The 2008 BankWest Quality of Life survey (BankWest 2008a, 2008b, 2008c) scored the performance of 590 Local Government areas across Australia including 152 in NSW, using ten variables which contribute to the quality of life including health, home ownership, house size, internet access, employment rates, earnings, education, community volunteering and crime rates.

The survey rankings for Local Government areas across Cooks River Catchment are shown in Table 24 (BankWest 2008c). The rankings are for the whole of each Local Government area, including parts of some Local Government areas outside Cooks River Catchment, so their use needs to consider the information in Section 1.4 of this report.

Table 24 Quality of Life survey rankings for Local Government areas across Cooks River Catchment (listed in order of ranking, where 1 is the highest quality of life and 590 the lowest) (BankWest 2008c)

Local Government	Quality of Life survey ranking
Hurstville	286
Strathfield	310
Ashfield	406
Rockdale	451
Burwood	472
Bankstown	473
Marrickville	538
Canterbury	546

Information on Quality of Life survey rankings for the overall Sydney Metropolitan CMA region in 2011 can be found in the Regional Profile (Report 1 in this report series), and for the Local Government areas across the other seven Sydney Metropolitan CMA Places can be found in the other Place Reports (Reports 2 to 9 in this report series).

Crime rates were one of the ten variables addressed in the Quality of Life survey. A breakdown of numbers of different types of crime in each of the Local Government areas across the Sydney Metropolitan CMA region can be found in the Appendix of Tables (Report 10 in this report series).

4.6 Gentrification

The Australian Housing and Urban Research Institute (AHURI) study *Gentrification and displacement: the household impacts of neighbourhood change* (AHURI 2011) finds that the Marrickville and Randwick Local Government areas and the Concord part of the Canada Bay Local Government area experienced the most rapid gentrification in the Sydney region in the decade to 2006.

Gentrification refers to the migration of higher income households to lower income neighbourhoods. It has three key effects (AHURI 2011):

1. Greater pressure on low income renters who either pay higher rents or are dislocated by the market to lower cost areas, either into private renting, presenting to social housing providers or becoming homeless.
2. Low income owners and renters are diverted over time to other locations with the subsequent loss of social diversity and reducing accessibility to employment (for parents) and education (for children) opportunities.
3. Changing communities and service infrastructures which often no longer cater for lower income residents.

Marrickville is located mostly within the Cooks River Catchment and Sydney City, Harbour and Beaches CMA Places. Because gentrification causes low income owners and renters to be diverted over time to other locations the impacts of the gentrification of these areas are likely to be being felt in other parts of Cooks River Catchment or in other CMA Places.

The study *Gentrification and displacement: the household impacts of neighbourhood change* (AHURI 2011) includes recommended policy responses to gentrification.

5 Environmental engagement profile

5.1 Level of volunteering

The numbers and proportions of volunteers in Cooks River Catchment in 2011 are shown in Table 25 (ABS 2012n). The information relates to voluntary work for an organisation or group, including groups and organisations related to the environment and groups and organisations not related to the environment. The Australian Bureau of Statistics only collects volunteering information for people aged 15 years and over so the total in Table 25 are smaller than overall populations for the region and Places.

Cooks River Catchment has the second lowest proportion of volunteers of all eight CMA Places (11.41%).

Table 25 Numbers and proportions of volunteers in Cooks River Catchment in 2011 (ABS 2012n)

Volunteer	29232	11.41%
Not a volunteer	202490	79.05%
Voluntary work not stated	24438	9.54%
Total	256160	

The numbers and proportions of volunteers in the overall Sydney Metropolitan CMA region in 2011 can be found in the Regional Profile (Report 1 in this report series), and for the Local Government areas across the other seven Sydney Metropolitan CMA Places can be found in the other Place Reports (Reports 2 to 9 in this report series). Detailed tables showing breakdowns of volunteers according to gender and age can be found in the Appendix of Tables (Report 10 in this report series).

5.2 Environmental concern

The NSW Office of Environment and Heritage *Who Cares about the Environment* survey is conducted every three years and explores NSW people's environmental knowledge, attitudes and behaviours. The responses to some of the survey questions provide useful insights into environmental concern and activity in the Sydney Metropolitan CMA region. Information on these questions and the responses for the Sydney Inner and Sydney Outer survey regions can be found in the Regional Profile (Report 1 in this report series).

6 References

Ausgrid, 2011, *Average Household Consumption*, viewed 2 August 2012, http://www.ausgrid.com.au/Common/About-us/Sharing-information/Data-to-share/~/_media/Files/About%20Us/Sharing%20Information/Avg%20household%20consumption%202011.pdf

Australian Bureau of Statistics, 2008, *Census of Population and Housing: Socio-Economic Indexes for Areas (SEIFA), Australia - Data only, 2006*, cat. no. 2033.0.55.001, viewed 12 August 2012, <http://www.abs.gov.au/AUSSTATS/abs@.nsf/Lookup/2033.0.55.001Main+Features12006?OpenDocument>

Australian Bureau of Statistics, 2011a, *2011 Census Dictionary, Glossary*, 'Australian Statistical Geography Standard (ASGS)', viewed 11 August 2012, <http://www.abs.gov.au/ausstats/abs@.nsf/Lookup/2901.0Chapter23102011>

Australian Bureau of Statistics, 2011b, *2011 Census Dictionary, Glossary*, 'Place of Usual Residence (PURP)', viewed 11 August 2012, <http://www.abs.gov.au/ausstats/abs@.nsf/Lookup/2901.0Chapter47302011>

Australian Bureau of Statistics, 2011c, *2011 Census Dictionary, Glossary*, 'Estimated Resident Population (ERP)', viewed 11 August 2012, <http://www.abs.gov.au/ausstats/abs@.nsf/Lookup/2901.0Chapter31702011>

Australian Bureau of Statistics, 2012a, *Basic Community Profile, Statistical Area Level 1, NSW*, 'Table B01. Selected Person Characteristics by Sex, 2011 Census DataPack', viewed 2 August 2012, <http://www.abs.gov.au/websitedbs/censushome.nsf/home/datapacks?opendocument&navpos=250>

Australian Bureau of Statistics, 2012b, *Relationship database 2006*, TableBuilder Basic, viewed 2 August 2012, <http://www.abs.gov.au/websitedbs/censushome.nsf/home/tablebuilder?opendocument&navpos=240>

Australian Bureau of Statistics, 2012c, *Regional Population Growth, Australia, 2011*, cat. no. 3218.0, viewed 11 August 2012, <http://www.abs.gov.au/ausstats/abs@.nsf/mf/3218.0/>

Australian Bureau of Statistics, ABS 2012d, *Basic Community Profile, Statistical Area Level 1, NSW*, 'Table B25. Family Composition', 2011 Census DataPack, viewed 2 August 2012, <http://www.abs.gov.au/websitedbs/censushome.nsf/home/datapacks?opendocument&navpos=250>

Australian Bureau of Statistics, 2012e, *Basic Community Profile, Statistical Area Level 1, NSW*, 'Table B09. Country of Birth of Person by Sex', 2011 Census DataPack, viewed 2 August 2012, <http://www.abs.gov.au/websitedbs/censushome.nsf/home/datapacks?opendocument&navpos=250>

Australian Bureau of Statistics, 2012f, *Basic Community Profile, Statistical Area Level 1, NSW*, 'Table B13. Language Spoken at Home by Sex', 2011 Census DataPack, viewed 2 August 2012, <http://www.abs.gov.au/websitedbs/censushome.nsf/home/datapacks?opendocument&navpos=250>

Australian Bureau of Statistics, 2012g, *Basic Community Profile, Statistical Area Level 1, NSW*, 'Table B17. Total Personal Income (Weekly) by Age by Sex', 2011 Census DataPack, viewed 2 August 2012, <http://www.abs.gov.au/websitedbs/censushome.nsf/home/datapacks?opendocument&navpos=250>

Australian Bureau of Statistics, 2012h, *Basic Community Profile, Statistical Area Level 1, NSW*, 'Table B28. Total Household Income (Weekly) by Household Composition', 2011 Census DataPack, viewed 2 August 2012, <http://www.abs.gov.au/websitedbs/censushome.nsf/home/datapacks?opendocument&navpos=250>

Australian Bureau of Statistics, ABS 2012i, *Labour Force database 2006*, TableBuilder Basic, viewed 2 August 2012, <http://www.abs.gov.au/websitedbs/censushome.nsf/home/tablebuilder?opendocument&navpos=240>

Australian Bureau of Statistics, 2012j, *Basic Community Profile, Statistical Area Level 1, NSW*, 'Table B15. Type of Educational Institution Attending (Full/Part-Time Student Status by Age) by Sex', 2011 Census DataPack, viewed 2 August 2012, <http://www.abs.gov.au/websitedbs/censushome.nsf/home/datapacks?opendocument&navpos=250>

Australian Bureau of Statistics, 2012k, *Basic Community Profile, Statistical Area Level 1, NSW*, 'Table B31. Dwelling Structure', 2011 Census DataPack, viewed 2 August 2012, <http://www.abs.gov.au/websitedbs/censushome.nsf/home/datapacks?opendocument&navpos=250>

Australian Bureau of Statistics, 2012l, *Basic Community Profile, Statistical Area Level 1, NSW*, 'Table B32. Tenure Type and Landlord Type by Dwelling Structure', 2011 Census DataPack, viewed 2 August 2012, <http://www.abs.gov.au/websitedbs/censushome.nsf/home/datapacks?opendocument&navpos=250>

Australian Bureau of Statistics, 2012m), *Basic Community Profile, Statistical Area Level 1, NSW*, 'Table B35. Type of Internet Connection by Dwelling Structure', 2011 Census DataPack, viewed 2 August 2012, <http://www.abs.gov.au/websitedbs/censushome.nsf/home/datapacks?opendocument&navpos=250>

Australian Bureau of Statistics, 2012n, *Basic Community Profile, Statistical Area Level 1, NSW*, 'Table B19. Voluntary Work for an Organisation or Group by Age by Sex', 2011 Census DataPack, viewed 2 August 2012, <http://www.abs.gov.au/websitedbs/censushome.nsf/home/datapacks?opendocument&navpos=250>

Australian Bureau of Statistics, 2012o, *Counts of Australian Businesses, including Entries and Exits, Jun 2007 to Jun 2011*, cat. no. 8165.0, viewed 8 September 2012, <http://www.abs.gov.au/ausstats/abs@.nsf/mf/8165.0>

Australian Housing and Urban Research Institute (AHURI), 2011, *Gentrification and displacement: the household impacts of neighbourhood change*, viewed 11 August 2012, <http://www.ahuri.edu.au/publications/p40548/>

BankWest, 2008a, *Quality of Life Index 2008 - Quality of Life Report*, viewed 2 August 2012, <http://www.bankwest.com.au/media-centre/financial-indicator-series/bankwest-quality-of-life-index-2008-1269940008245#>

BankWest, 2008b, *Quality of Life Index 2008 - Quality of Life Report - NSW*, viewed 2 August 2012, <http://www.bankwest.com.au/media-centre/financial-indicator-series/bankwest-quality-of-life-index-2008-1269940008245#>

BankWest, 2008c, *Quality of Life Index 2008 – Complete Quality of life Rankings*, viewed 2 August 2012, <http://www.bankwest.com.au/media-centre/financial-indicator-series/bankwest-quality-of-life-index-2008-1269940008245#>

Independent Pricing and Regulatory Tribunal, 2007, *Residential energy and water use in Sydney, the Blue Mountains and Illawarra - Results from the 2006 household survey*, Electricity, Gas and Water - Research Paper 29, November 2007, viewed 2 August 2012, http://www.ipart.nsw.gov.au/files/33022cc2-4a20-41d2-a3f6-9f5d00ae4f0f/IPART_Household_Survey_2006_-_Residential_energy_and_water_use_in_Sydney_the_Blue_Mountains_and_Illawarra_-_3_December_2007_-_APD_-_WEB.pdf

Natural Resources Commission, 2012, *Framework for assessing and recommending upgraded catchment action plans, Version 2, June 2012*, NSW Natural Resources

Commission Document No. D11/0769, viewed 2 August 2012,
<http://www.nrc.nsw.gov.au/content/documents/Framework%20for%20CAPs2.pdf>